

# RARE COIN MONTHLY

FEBRUARY  
2018

COAST TO COAST COINS *and Currency*

9365 Gerwig Lane • Columbia, MD 21046-1524

\$2.00  
per issue



## Kick Back and Enjoy the Selection!

**W**elcome to our February edition of Rare Coin Monthly. We are always committed to finding you the finest numismatic material available & always at the best possible prices. That commitment took us to Tampa, Rochester, NY, Pittsburgh, and Charleston, WV over the last thirty days and the fruits of those trips are in this month's catalog. Kick back and enjoy the selection!



## 1924 \$20 St. Gaudens

PCGS. MS-66

This is a small but very impressive group of coins that just came out of Europe. Each has very flashy original luster and outstanding surfaces with minimal marks. Add one to your holdings this month at an excellent price!

**Only \$2,195.00 Each #206581**



## PCGS. MS-66 Morgan Dollars

— *Dates of our Choice* —

### 1878 to 1904

These are blast white Premium Gems at an excellent price. Grab some!

**Only \$219.00 Each #200200**

*\*Item Code # is located next to price.*



Visa, MasterCard, Discover and American Express accepted

### OFFICE HOURS

9 a.m. - 5 p.m. (Eastern Time Zone)  
Monday thru Friday  
Local Phone – 410-309-1622

### TERMS OF SALE

All coins, Artifacts, and Paper money we sell are unconditionally guaranteed Genuine.

We allow you a full 14 day return privilege from the day you receive your order except for bullion orders which may not be returned for a refund. We will repurchase bullion items at our current buy prices.

Any single coin removed from its holder will be considered sold.

All prices are subject to change. We are not responsible for typographical errors.

Please add \$5.00 postage and handling on all orders under \$500.

**Free shipping on orders of \$500 or more.** Non-domestic orders may require additional postage.

Bank Drafts, Money Orders, Personal Checks, VISA, MasterCard, Discover or American Express may be used for payment.

Confirmations must be postmarked within 48 hours or order may be declined at our discretion.

Credit card orders will be shipped to the card's billing address only.

Maryland residents please add 6% sales tax to all orders under \$1,000.00.

Layaway is available on orders of \$500.00 or more at 1/3 down, balance paid in 90 days. A 10% restocking fee will be charged to layaways cancelled or unpaid after 90 days. The balance will be refunded promptly. No changes can be made to these orders. We reserve the right to limit this privilege at any time, at our discretion. Gold and Bullion related items may not be put in layaway.

All transactions governed by the laws of the state of Maryland, and originate in that state.

### THIRD PARTY GRADED COINS & CURRENCY

The coin market is speculative and unregulated. Many areas of numismatics lend themselves to third party grading and authentication. Such certification does not eliminate all risks associated with the grading of coins and currency. Grading is a subjective matter and opinions as to the grade of a certified or uncertified item can differ. Items graded by the various services carry the guarantees, if any, of that particular service. Securing performance on any such guarantee is strictly between the purchaser and the particular grading service. Coast to Coast may or may not agree with the grade assigned by the particular grading service. Buyer should be aware that grading standards of coins have changed from time to time in the past and may do so again in the future.

NO OTHER REPRESENTATION, WARRANTY OR GUARANTEE IS GIVEN EITHER EXPRESSED OR IMPLIED.

### Archival Flips – Pack of 100 for \$10.99 #103197

For long term storage we recommend these PVC-free flips. They are too brittle for us to use for shipping, but they offer excellent long term protection for your coins.

## Free Shipping

## on orders of \$500 or more.

### GRADING OF 'RAW' COINS & CURRENCY

**Coins:** Our grading is based on Photograde and our interpretation of industry standards.

**Paper Money:** Our grading uses the industry standard as described in Robert Friedberg's, Paper Money of the United States.

E-mail us at

**info@coastcoin.com**

Visit our website at

**www.coastcoin.com**

## Do You Have Coins or Currency For Sale?

We are always in need of almost all types of U.S. & Foreign coins & currency. As you can see from our catalogs, we offer a diverse line of material so we can pay you a fair price for everything rather than just cherry picking the cream of your holdings. Call us at 1-800-638-8869 and talk to one of our buyers. We can set up an appointment for you to visit our Maryland offices, discuss shipping your holdings for a fast check, or, if the size of your collection is large enough, we'll travel to you!

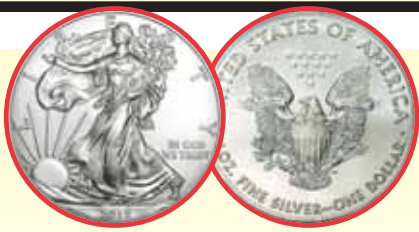


### Certified Coin Storage

**Official Boxes • Each Hold 20 Slabs**

**PCGS – \$7.25 #124926 • NGC – \$13.99 #124927**

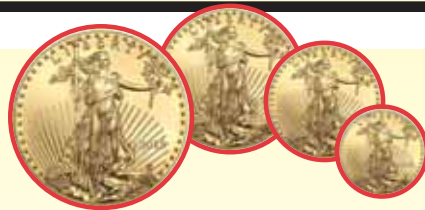




## 2018 Silver Eagles

*In Stock for Immediate Delivery*

- Each . . . . . #228801 **\$22.23**
- Roll of 20 . . . . . **\$443.60**
- Box of 500 . . **\$11,040.00**



## 2018 Gold Eagles

*In Stock for Immediate Delivery*

- One Ounce . . . #228802 **\$1,549.72**
- Half Ounce . . . #228803 **\$785.02**
- Quarter Ounce . #228804 **\$399.28**
- Tenth Ounce . . . #228806 **\$165.13**



## \*Silver Bullion

These 3 popular formats are probably your most economical way to own silver bullion!

- One Oz. Round . #124392 **\$19.68**
- Ten Oz. Bar . . . #102549 **\$196.30**
- 100 Oz. Bar . . #102550 **\$1,957.99**

*\*Manufacturers vary.*

# — Rare Coin Duplicate Sale —



Here's a group of tough coins that we'd be delighted to have in stock even once a year. In combing through the inventory, we were amazed to find we had a second of each in stock. We're pleased to offer one of each of these scarce beauties at very attractive sale prices.



- 1884 Indian Head Cent.  
PCGS. PR-65 BN . . . . . #213806 **\$495.00**
- 1910-S Lincoln Cent.  
PCGS. MS-65 RB CAC . . . . . #130025 **\$450.00**
- 1915-D Lincoln Cent.  
PCGS. MS-65 RD. . . . . #206823 **\$975.00**
- 1919-D Lincoln Cent.  
PCGS. MS-65 RB CAC . . . . . #210390 **\$1,195.00**
- 1864 Two Cent Piece. Small Motto.  
PCGS. MS-65 BN CAC . . . . . #225156 **\$2,750.00**
- 1871 Two Cent Piece.  
PCGS. MS-65 RB . . . . . #210174 **\$1,495.00**
- 1873 Silver Three Cent Piece.  
PCGS. PR-64 . . . . . #137718 **\$1,950.00**
- 1840 Seated Liberty Half Dime.  
PCGS. MS-65 CAC . . . . . #201868 **\$1,850.00**
- 1883-W/C Liberty Nickel.  
PCGS. MS-66+ CAC . . . . . #213855 **\$3,250.00**
- 1916-D Buffalo Nickel.  
PCGS. MS-65 . . . . . #202325 **\$1,250.00**

- 1931-S Buffalo Nickel.  
PCGS. MS-66 . . . . . #208668 **\$550.00**
- 1885 Seated Liberty Dime.  
NGC. PR-65 CAM . . . . . #207658 **\$995.00**
- 1894 Barber Quarter.  
PCGS. PR-66 CAM . . . . . #204892 **\$2,250.00**
- 1917 T-2 Standing Liberty Quarter.  
PCGS. MS-66 FH . . . . . #212137 **\$1,695.00**
- 1893-O Barber Half Dollar.  
PCGS. MS-62 . . . . . #224681 **\$1,095.00**
- 1940-S Walking Liberty Half Dollar.  
PCGS. MS-66 CAC . . . . . #207277 **\$949.00**
- 1888-O Morgan Dollar.  
PCGS. MS-65 PL . . . . . #225931 **\$649.00**
- 1934 Peace Dollar.  
PCGS. MS-65+ . . . . . #217629 **\$995.00**
- 1858-S One Dollar Gold Coin.  
PCGS. MS-61 . . . . . #227894 **\$5,495.00**
- 1911-S Five Dollar Gold Coin.  
PCGS. MS-63 . . . . . #227908 **\$3,750.00**

# Highlighted New Purchases...



## 1793 Half Cent PCGS. F-15

Very nice for the grade with strong detail and pleasing problem-free surfaces. None of the old scratches, pitting, and surfaces problems, that plague this issue, are present.

**Only \$10,625.00** #228979



## 1877 Indian Head Cent

**PCGS. PR-65 BN CAC**

A beautiful Gem with very flashy reflective surfaces. Considerable faded red blends with soft brown with iridescent turquoise, lavender, & gold hues appearing at different angles under a light. Free of marks and carbon. A super 1877 'Indian'!

**Only \$5,895.00** #229006



## 1909-S VDB Lincoln Cent

**PCGS. MS-65 RD**

Beautiful original mint red surfaces with no significant marks or spots.

**Only \$4,450.00**  
#139015



## 1914-D Lincoln Cent

**PCGS. MS-64 RB CAC**

A beautiful example of this 'key' date with considerable mint red blending with soft-brown. The strike is sharp and the surfaces reveal no significant marks.

**Only \$5,295.00** #122060



## 1919-S Lincoln Cent

**PCGS. MS-65 RD**

Rich copper-red luster & a sharp strike with great surfaces that show no significant marks. Truly scarce at this quality level with a 'Red' designation. Only 3 have graded numerically finer at PCGS.

**Only \$6,750.00** #227384



## 1872 Two Cent Piece

**PCGS. MS-65 RB**

Sharply struck with flashy proof-like surfaces that are covered with a beautiful blend of fiery red and burgundy luster. The 'key' business strike in the series. PCGS pop: 20 in 65+ (2 in 65+), 3 finer.

**Only \$8,250.00** #229053



## 1873 Close 3 Two Cent Piece

**PCGS. PR-66 BN CAC**

Beautiful proof mirrored surfaces with glimpses of red blending with rich mahogany and a faint hue of ice-blue. The strike is razor sharp and the eye appeal is superb! A proof-only date with just 600 minted.

**Only \$5,695.00** #222171



## 1887/6 Nickel Three Cent Piece

**PCGS. PR-67 CAM CAC**

Strong Overdate. Spectacular quality with blast white luster and strong cameo contrast. The surfaces are virtually flawless and the strike is super sharp. None have graded numerically finer at PCGS.

**Only \$4,995.00** #228997



# ...from our One-of-a-Kind Section!



## 1917-S Buffalo Nickel

**PCGS. MS-66 CAC**

An exceptional example of this better date with a sharp strike and very flashy mint luster. PCGS Population: 24 in 66 (1 in 66+), 0 finer.

**Only \$6,795.00** #223801



## 1918/17-S Standing Liberty Quarter

**PCGS. MS-60**

The only major variety in the series and, by at least two-fold, the rarest coin in mint state. This is a pleasing well struck example with nice lustrous surfaces that have a light champagne-gold hue. Outstanding for the grade.

**Only \$19,850.00** #228999



## 1895-O Morgan Dollar

**NGC. MS-61**

Nice original silver-white luster & a strong strike. The minimal marks that define the grade are relatively trivial and don't distract from the strong eye appeal.

**Only \$18,500.00** #140217



## 1811 Five Dollar Gold

**PCGS. AU-55**

Small 5. A solid strike with beautiful original surfaces with rich mint luster. Problem-free and devoid of significant marks.

**Only \$10,495.00**  
#229129



## 1909-O Five Dollar Gold

**NGC. MS-60**

We offer one of the most celebrated coins in the \$5 Indian series. Not only is it one of the key dates, but is also the last gold coin made at the New Orleans mint and the only 'O' mint Indian gold coin of any denomination. The 34,200 coin mintage is by far the lowest in the series. This is a well struck example.

**Only \$32,950.00** #229135



## 1895-S Twenty Dollar Gold

**PCGS. MS-65+**

A bold strike with vibrant yellow-gold luster and minimal marks. Super quality and the single finest example graded at PCGS.

**Only \$17,500.00**  
#229134



## 1927-S Twenty Dollar Gold

**PCGS. AU-58**

Very scarce in all grades. PCGS & NGC combined have graded just 260 coins. There is probably considerable duplication in that number as many have undoubtedly been 'cracked' to try for upgrades or crossover from one service to the other. This is a lustrous pale-gold example that is well struck.

**Only \$21,950.00** #227377



## 1879 Pattern "Washlady" Quarter

**PCGS. PR-66 RB. J-1591. R-6**

Charles Barbers' "Washlady" obverse depicts Ms. Liberty with her hair piled atop her head. An eagle is perched on the reverse with an olive branch in one claw & three arrows in the other. This is one of the most admired of all pattern designs. Struck in copper with a reeded edge. The surfaces are very flashy and mostly red.

**Only \$19,925.00** #225464

# ONE OF A KIND SELECTIONS

Coins are made available as they come into stock. Check our website – [www.coastcoin.com](http://www.coastcoin.com) – for our most up-to-date listing.

## Colonial Coinage

(1792-94). Kentucky Token. PCGS. MS-64. BN. Plain Edge. A very sharp strike with attractive glossy brown surfaces. . . . #223841 \$1235.00



1723. Rosa Americana. PCGS. AU-58. 2 Pence. Arguably mint state with sharp detail and glossy chestnut brown surfaces that show no apparent sign of wear. . . #228866 \$1795.00  
 1787. Massachusetts. PCGS. VF-30. Cent. Arrows in Left Talon. . . . #228958 \$699.00  
 1789. Mott Token. PCGS. AU-58. Thick Planchet, Plain Edge. Issued as a commemorative for the founding of the Mott Company located at 240 Water Street in NYC. Struck after the date on the coin, after 1807 and possibly as late as the 1830's. #227213 \$845.00

## Half Cents



1793. PCGS. F-15. Very nice for the grade with strong detail and pleasing problem-free surfaces. None of the old scratches, pitting, and surfaces problems, that plague this issue, are present. . . . #228979 \$10625.00  
 1804. PCGS. VF-35. Plain 4, No Stems. Solid detail with pleasing light brown surfaces. . . . #129210 \$349.00  
 1809/6. PCGS. AU-58. CAC. 9 over inverted 9. Lustrous light brown w/golden-tan remnants of faded red. Very close to mint state as just a tiny touch of 'rub' is found on the highest points of the design. . . . #211609 \$1150.00  
 1825. PCGS. MS-63. BN. A strong strike and vibrant mint luster over attractive problem-free surfaces. . . . #224399 \$1950.00  
 1834. NGC. MS-63. BN. C-1. Well struck with lovely brown surfaces that retain a touch of red. . . . #228858 \$445.00  
 1835. PCGS. MS-64. BN. Very well struck with lustrous light chocolate brown surfaces. . . . #222480 \$795.00  
 1853. PCGS. MS-65. BN. Very vibrant olive-brown luster and a strong strike. The surfaces are free of significant marks and carbon. . . . #225706 \$975.00

1853. PCGS. MS-66. BN. A sharp strike with nearly perfect chocolate-brown lustrous surfaces. Super quality! . . . #224400 \$1569.00  
 1854. PCGS. MS-65. BN. Well struck with lustrous light brown surfaces that have a nice olive-green hue. . . . #224563 \$1095.00  
 1855. NGC. MS-65. BN. C-1. Well struck with clean lustrous chocolate brown surfaces that display a faint reddish tint. . . #135046 \$869.00  
 1855. NGC. MS-65. RB. C-1. A beautiful flashy coin with a great strike, no significant marks, and considerable mint red. #205494 \$1495.00

## Large Cents

1796. PCGS. G-4. Liberty Cap. Clear date, LIBERTY, and portrait. . . . #228517 \$550.00  
 1803. PCGS. XF-45. CAC. S-260. Small Date, Large Fraction. Solid detail with beautiful problem-free light brown surfaces that have a faded golden-red tint. . . #223293 \$1650.00  
 1818. PCGS. MS-63. BN. Rich lustrous brown surfaces w/a subtle red hue. #219162 \$875.00



1824. PCGS. AU-58. CAC. Strong detail and lustrous mahogany surfaces that are problem-free and show just the barest trace of 'rub'. . . . #223458 \$2495.00  
 1824. PCGS. XF-40. Well detailed w/problem-free chocolate brown surfaces. #210546 \$525.00  
 1824. PCGS. XF-45. Strong detail and pleasing two-toned brown surfaces. . . #225373 \$649.00  
 1837. NGC. MS-62. BN. Medium Letters, Head of 1836. frosty golden-brown surfaces with a faint blue hue. . . . #137480 \$489.00  
 1837. PCGS. AU-58. Head of 1838. Well struck and hard to detect any wear. The surfaces are a nice glossy brown with a faint blue tint. . . . #228835 \$379.00  
 1837. PCGS. MS-63. BN. Head of 1838. Beautiful silky smooth chocolate brown surfaces & devoid of significant marks. #227193 \$695.00  
 1837. PCGS. MS-64. BN. CAC. Medium Letters. Frosty chocolate brown luster with a faint reddish hue. The strike is strong and the eye appeal is exceptional. . . . #207666 \$1350.00  
 1837. PCGS. MS-64. BN. Head of 1838. Beautiful frosty chocolate brown luster and a sharp strike. . . . #227238 \$1025.00  
 1838. PCGS. MS-64. BN. CAC. Lustrous light chocolate brown surfaces that are problem-free and devoid of spots. . . #211799 \$1250.00  
 1847. PCGS. MS-65. BN. CAC. Beautiful lustrous rich brown surfaces with traces of red,

particularly on the reverse. The strike is very sharp and the surfaces are satiny and clean with no significant marks. . . #201333 \$1595.00  
 1849. NGC. MS-65. BN. Vibrant luster on light chocolate brown surfaces with a hint of red and a faint ice-blue hue. . . . #228836 \$1325.00  
 1852. PCGS. MS-65. RB. CAC. Well struck with fiery red and soft brown luster over nearly mark-free surfaces. . . #202282 \$1295.00  
 1853. NGC. MS-65. BN. N-25. Well struck and nearly mark-free with pleasing lustrous light brown surfaces. . . . #202854 \$685.00  
 1853. PCGS. MS-65. BN. CAC. Well struck with reddish-brown luster over nearly flawless surfaces. . . . #229115 \$749.00  
 1854. PCGS. MS-64. BN. Well struck w/vibrant chocolate-brown surfaces. . . #229140 \$399.00  
 1855. PCGS. MS-63. Knob on Ear. N-9. Well detailed with shimmering medium brown surfaces that have a faint lavender hue. Free of spots & significant marks. #229124 \$749.00  
 1856. PCGS. MS-64. BN. Slanted 5. Beautiful smooth chocolate brown surfaces and a sharp strike. . . . #227157 \$469.00  
 1856. PCGS. MS-65. RB. Slanted 5. Well struck and lustrous with nice clean surfaces. . . . #221348 \$1295.00

## Flying Eagle Cents

1857. PCGS. MS-62. Sharply struck w/crisp mint luster over spot-free surfaces. #219012 \$699.00  
 1857. PCGS. MS-64. CAC. Very sharply struck w/pleasing copper-nickel tan surfaces. Exceptionally nice for the grade. . #204332 \$1750.00  
 1857. PCGS. MS-64. Well struck and spot-free w/floppy copper-nickel luster. #134217 \$1375.00



1858-SL. PCGS. MS-64. CAC. Spectacular for the grade with a sharp strike and wonderful blazing mint luster. The eye appeal is fantastic! . . . #210342 \$2095.00

## Indian Head Cents

1859. PCGS. MS-65. Sharply struck w/blazing original mint luster. A beautiful example of this first-year 'Indian'. . . . #202354 \$2395.00



1859. PCGS. PR-65. Super flashy deep mirrored fields & a precise strike. Only 800 of this first year Indian Head Cent minted with this one having excellent eye appeal. #220845 \$4175.00

\*Item Code # is located next to price.



- 1861. NGC. MS-65. CAC. A sharp strike with nearly flawless surfaces & beautiful vibrant copper-nickel 'red' luster. . . #205673 \$1250.00
- 1861. PCGS. MS-64. CAC. Vibrant copper-nickel tan luster and a sharp strike. . #128903 \$665.00
- 1862. PCGS. MS-64. Sharp strike. #123420 \$359.00
- 1862. PCGS. MS-65. Crisp original mint luster and a sharp strike with outstanding surfaces. . . . . #125854 \$895.00
- 1863. PCGS. MS-64+. Vibrant copper-nickel tan luster and a sharp strike. . #210279 \$475.00
- 1863. PCGS. MS-65. . . . . #204079 \$849.00
- 1863. PCGS. MS-65. CAC. Rich satiny mint luster & a sharp strike. An interesting die crack connects both ends of the wreath running thru the shield. Super quality! #206376 \$1049.00
- 1864-C/N. PCGS. PR-64. Nice even original copper-nickel surfaces and a sharp strike with deeply mirrored fields and frosted devices. Only 370 minted which is the 3rd lowest in the series behind the 1864 Bronze and the 1864-L. . . . . #223469 \$1595.00



- 1864-C/N. PCGS. PR-64. CAC. Very flashy with blazing spot-free copper-nickel luster and a fair amount of frost on the design elements. The proof fields are highly reflective and the visual appeal is outstanding. Only 370 minted. . . . . #229138 \$1695.00
- 1865. PCGS. MS-64. RB. Plain 5. Lovely iridescent mint red & light brown. #220309 \$575.00
- 1865. PCGS. MS-65. BN. CAC. Plain 5. Well struck and nearly mark-free with a pleasing blend of faded red and soft brown luster. . . . . #227130 \$599.00
- 1866. PCGS. MS-64. BN. CAC. Very attractive with lustrous light chocolate brown blending with a touch of faded red. . . #211001 \$599.00
- 1866. PCGS. MS-65. BN. CAC. Satiny soft brown luster with a touch of red. . . #225912 \$995.00
- 1868. PCGS. AU-50. . . . . #228783 \$219.00
- 1868. PCGS. MS-65. RB. CAC. Well struck and free of significant marks or spots. The surfaces retain considerable mint red blending with a soft light brown. The luster is quite vibrant! . . . . . #128046 \$1295.00



- 1868. PCGS. MS-65+. RB. CAC. Well struck with lovely even reddish-brown surfaces that show no significant marks. . #213951 \$1495.00
- 1870. PCGS. MS-63. RB. CAC. Flashy red-brown surfaces that are free of significant marks. . . . . #207925 \$895.00
- 1871. PCGS. MS-64. BN. CAC. Sharply struck with lustrous mostly brown surfaces that retain some mint red. . . . . #224543 \$1350.00

- 1874. PCGS. MS-64. RB. Well struck and lustrous w/considerable mint red blending with glossy soft-brown. . . . . #200827 \$549.00
- 1874. PCGS. MS-64. RD. Rich golden-red luster with pleasing surfaces that reveal minimal marks and spots. . . . . #227200 \$995.00
- 1874. PCGS. MS-65. RB. CAC. Bright mostly red luster and a sharp strike with minimal abrasions and no carbon. . . . #207184 \$995.00
- 1874. PCGS. PR-66. RB. CAC. A gorgeous proof with iridescent reddish-brown surfaces with a touch of lavender and lime-green. Super quality! . . . . . #225393 \$1825.00



- 1877. PCGS. MS-64. BN. Flashy olive-green surfaces with a touch of peripheral red. The strike is needle-sharp & the eye appeal is outstanding. . . . . #133650 \$6495.00
- 1877. PCGS. PR-65. BN. CAC. A beautiful Gem with very flashy reflective surfaces. Considerable faded red blends with soft brown with iridescent turquoise, lavender, and gold hues appearing at different angles under a light. Free of marks and carbon. A super 1877 'Indian'! . . . . #229006 \$5895.00
- 1879. PCGS. PR-66. RB. A great strike with beautiful surfaces and even reddish-brown luster. . . . . #223647 \$1295.00
- 1880. PCGS. MS-65. BN. Well struck with beautiful chocolate brown surfaces that have a trace of red and a faint lavender hue. . . . . #229068 \$359.00
- 1883. PCGS. PR-65. RB. Flashy reddish-tan luster over nearly flawless proof surfaces. . . . . #221914 \$559.00
- 1884. NGC. PF-64. RB. Flashy with lots of mint red, particularly on the obv. . #228773 \$389.00
- 1884. PCGS. PR-64. RB. Sharply struck with deep reflective surfaces and lots of mint red remaining. . . . . #123439 \$449.00
- 1884. PCGS. PR-65. RB. CAC. Extremely flashy deep mirrored fields and lots of fiery mint red. . . . . #137382 \$625.00
- 1884. PCGS. PR-65. RD. Extremely flashy with deep mirrored fields, a needle-sharp strike, and gorgeous mint red luster. #209702 \$995.00
- 1885. PCGS. MS-65. RB. Lovely subdued red surfaces and a solid strike. Excellent eye appeal! . . . . . #219729 \$699.00



- 1886 T-2. PCGS. MS-65. RB. CAC. Lovely orange-red and soft brown surfaces that are highly lustrous and offer excellent eye appeal. . . . . #221202 \$2495.00
- 1886 T-1. PCGS. MS-65. BN. CAC. Sharply struck with rich lustrous brown surfaces that

- show a trace of red with lavender and lime hues. Very attractive. . . . . #210564 \$795.00
- 1887. PCGS. PR-65. RB. CAC. Sharply struck with highly reflective mirrored fields and beautiful subdued red luster. #221572 \$795.00
- 1888. PCGS. PR-64. RB. Flashy faded red proof surfaces on the obv. with iridescent lavender and brown on the reverse. . . #228875 \$399.00
- 1889. PCGS. MS-64. BN. . . . . #210975 \$169.00
- 1889. PCGS. MS-65. RD. Beautiful full copper-red luster and a strong strike with 4 full diamonds. Super quality! . . #229027 \$1695.00
- 1889. PCGS. PR-65. RB. CAC. Beautiful surfaces with iridescent mint red and soft lavender-brown luster. . . . . #229032 \$845.00



- 1889. PCGS. PR-66. RB. CAC. Super quality with vibrant mint luster that's nearly full red. The strike is sharp and the deep mirrored surfaces are nearly pristine. #228935 \$1495.00
- 1891. PCGS. MS-64. RB. CAC. #223625 \$259.00
- 1891. PCGS. MS-65. BN. CAC. Rich olive-brown surfaces and a sharp strike. . . #225141 \$259.00
- 1891. PCGS. MS-65. RB. CAC. Nice vivid mostly red luster that is spot-free. . . #226227 \$750.00
- 1892. PCGS. MS-64. RD. Rich copper-red luster and a sharp strike. . . . #225554 \$359.00
- 1892. PCGS. PR-64. RD. Bright red luster over deeply mirrored surfaces. Impressive for the grade! . . . . . #225511 \$649.00
- 1893. PCGS. MS-65. RD. Nice full copper-red luster and a sharp strike with clean surfaces. . . . . #229117 \$1049.00
- 1894. PCGS. MS-65. BN. CAC. Well struck with rich brown lustrous surfaces that have retained a touch of red. . . . #218708 \$395.00
- 1895. NGC. PR-65. RB. Beautiful highly reflective surfaces with iridescent lavender-red luster. The strike is very sharp and there are no significant marks or spots. #228811 \$549.00
- 1895. PCGS. MS-65+. RD. Well struck with vibrant original mint red luster and beautiful clean surfaces. . . . . #228953 \$995.00
- 1898. PCGS. MS-65. BN. . . . . #225049 \$169.00



- 1898. PCGS. MS-66. RD. Beautiful vibrant full red luster & a great strike. Devoid of carbon spots with exceptionally nice surfaces. . . . . #211150 \$1795.00
- 1901. PCGS. PR-65. RD. Blazing golden-red luster with strong frost on Ms. Liberty. . . . . #225028 \$1095.00
- 1903. PCGS. MS-65. RD. Flashy full red luster and a sharp strike. . . . . #206270 \$495.00
- 1904. PCGS. MS-65. RD. Flashy full red luster. . . . . #135560 \$495.00

- 1905. PCGS. MS-65. RB. . . . . #122051 \$179.00
- 1905. PCGS. PR-64. RD. Mint red surfaces with an iridescent lavender hue. Old holder. . . . . #225479 \$549.00
- 1905. PCGS. PR-65. RB. Nice deep mirrored surfaces with orange-red luster and a light brown tint. . . . . #227438 \$599.00
- 1906. PCGS. MS-64. RB. . . . . #126971 \$109.00
- 1906. PCGS. MS-65. RB. . . . . #212554 \$195.00
- 1906. PCGS. MS-65. RD. Blazing red luster and a sharp strike. . . . . #201902 \$499.00
- 1907. NGC. PR-64. BN. Very attractive chocolate brown with a touch of iridescent red, particularly on the reverse. . . . . #229044 \$299.00
- 1907. PCGS. MS-65. RD. Flashy blazing luster on this sharply struck Gem. . . . . #207523 \$525.00



- 1908-S. PCGS. MS-65. RB. Very well struck with all 4 diamonds complete. The surfaces are mostly red and the eye appeal is outstanding. . . . . #210323 \$1295.00
- 1909-S. NGC. MS-62. RB. From the last year of the series comes the date with the lowest mintage - 309,000. This is a well struck example with bright red luster mingling with soft brown. . . . . #228800 \$1235.00

**Lincoln Cents**

- 1909. PCGS. MS-66+. RD. A nearly flawless example of this first-year Lincoln Cent with blazing red luster. . . . . #229078 \$475.00
- 1909. PCGS. MS-67. RD. Impeccably preserved with super vibrant blazing red luster over virtually mark-free and spot-free surfaces. Incredible eye appeal! . . . . . #229109 \$1595.00
- 1909-S VDB. PCGS. MS-62. BN. Sharply struck and problem-free with lustrous medium brown surfaces that show just a trace of faded golden-red. . . . . #217570 \$1375.00
- 1909-S VDB. PCGS. MS-63. BN. CAC. Soft olive-brown with a nice dose of subdued mint red. . . . . #209760 \$1650.00
- 1909-S VDB. PCGS. MS-65. BN. Considerable subdued mint red blends with soft-brown on the silky smooth surfaces of this lovely scarce 'Lincoln'. . . . . #224868 \$2750.00



- 1909-S VDB. PCGS. MS-65. RD. Beautiful original mint red surfaces with no significant marks or spots. . . . . #139015 \$4450.00
- 1909-S. PCGS. MS-65. RB. Flashy luster with lots of mint red. . . . . #227942 \$549.00
- 1909-VDB. NGC. MS-65. RD. #202741 \$109.00
- 1909-VDB. PCGS. MS-65. RD. Doubled Die Obverse. Original mint red surfaces on this

- scarce and popular variety. Doubling is most obvious on LIBERTY. . . . . #228968 \$1750.00
- 1909-VDB. PCGS. MS-66. RD. Super 'fresh' blazing red luster. . . . . #124737 \$295.00
- 1909-VDB. PCGS. MS-66. RD. CAC. Original blazing red luster. . . . . #203304 \$325.00
- 1909-VDB. PCGS. MS-67. RD. CAC. Incredibly fresh and intense blazing red luster. The sharp is needle-sharp and the surfaces are virtually flawless. Amazing quality for this first-year 'Lincoln'! . . . . . #229108 \$1695.00
- 1910-S. PCGS. MS-64. BN. . . . . #226274 \$169.00
- 1910-S. PCGS. MS-65. BN. A sharp strike with lustrous surfaces that retain a fair amount of faded red. . . . . #216042 \$399.00
- 1911-S. PCGS. MS-64. RB. Sharply struck with lustrous surfaces that are mostly red. . . . . #201922 \$499.00



- 1911-S. PCGS. MS-65+. RB. CAC. Nearly full red and a sharp strike with beautiful nearly mark-free surfaces. Tied for the finest 'RB' 1911-S graded at PCGS plus CAC approved. . . . . #229077 \$2850.00
- 1912-D. PCGS. MS-64. RB. CAC. Well struck with attractive copper-red and soft brown surfaces. . . . . #132531 \$450.00
- 1912-D. PCGS. MS-65. BN. Shimmering brown luster and a sharp strike with exceptionally nice, clean surfaces. . . . . #228889 \$599.00
- 1912-S. PCGS. AU-58. . . . . #216730 \$149.00
- 1912-S. PCGS. MS-64. RB. Well struck with attractive red-brown surfaces that are free of significant marks. . . . . #132534 \$499.00
- 1913. PCGS. PR-64. RD. A beautifully preserved matte proof with wonderful bright red luster. . . . . #229125 \$1095.00



- 1913. PCGS. PR-66. RB. CAC. A gorgeous matte proof with nearly flawless reddish-brown surfaces. . . . . #217979 \$2150.00
- 1913-D. PCGS. MS-64. BN. Well struck with glossy brown surfaces that show a tiny trace of red and neon hues of lavender and blue. . . . . #205969 \$239.00
- 1913-S. PCGS. MS-64. BN. Iridescent golden-brown with a touch of lavender. Well struck and pleasing. . . . . #137351 \$449.00
- 1913-S. PCGS. MS-64. RB. CAC. Well struck with considerable mint red. . . . . #202375 \$469.00
- 1914. PCGS. PR-64. RB. CAC. Beautiful golden-red, lavender, and turquoise color on this seemingly under-graded matte proof. . . . . #228954 \$975.00
- 1914. PCGS. PR-65. RB. CAC. A beautiful Gem Matte Proof with a shimmering blend of mint

- red and soft iridescent lavender hued brown. . . . . #136689 \$1465.00
- 1914-D. PCGS. AU-50. Sharp detail w/glossy medium brown surfaces. . . . . #140162 \$1369.00



- 1914-D. PCGS. MS-64. RB. CAC. A beautiful example of this 'key' date with considerable mint red blending with soft-brown. The strike is sharp and the surfaces reveal no significant marks. . . . . #122060 \$5295.00
- 1914-S. PCGS. MS-64. RB. CAC. A strong strike for the date with shimmering subdued red surfaces. . . . . #201870 \$1295.00
- 1915-D. PCGS. MS-64. RB. Flashy red-brown luster and a sharp strike. . . . . #123932 \$229.00
- 1915-D. PCGS. MS-64. RB. CAC. Mostly red and a great looking coin for the grade. . . . . #229030 \$249.00
- 1916. PCGS. MS-66. RD. Beautiful copper-red luster and a very sharp strike. #223407 \$450.00
- 1916-D. NGC. MS-65. RB. Very well struck and free of significant marks with shimmering mint luster. . . . . #217147 \$575.00
- 1916-D. PCGS. MS-65. RD. CAC. An impressive mint red Gem with a precise strike and no significant marks. . . . . #213244 \$1995.00



- 1916-S. PCGS. MS-64. RD. Well struck with pleasing surfaces and flashy mint red luster. . . . . #225396 \$1469.00
- 1916-S. PCGS. MS-65. BN. CAC. Well struck with no significant marks and a trace of red mixing with lustrous brown surfaces. None have graded higher at PCGS. #205530 \$795.00
- 1917-D. PCGS. MS-64. BN. Rich brown luster over nearly mark-free surfaces. #128448 \$209.00
- 1917-D. PCGS. MS-64. RB. CAC. Shimmering red & lavender-brown surfaces. #227322 \$365.00
- 1917-D. PCGS. MS-65. RB. CAC. A well struck Gem with lots of mint red. . . . . #202284 \$699.00
- 1917-S. PCGS. MS-64. RB. Well struck with lots of mint red blending with soft brown. . . . . #133837 \$399.00
- 1918-D. PCGS. MS-63. BN. . . . . #216263 \$155.00
- 1918-D. PCGS. MS-64. RB. CAC. A bold strike with lustrous soft red and brown surfaces. . . . . #229028 \$499.00
- 1919-S. PCGS. MS-64. BN. CAC. #211304 \$229.00
- 1919-S. PCGS. MS-64. RB. CAC. Lovely subdued red and soft brown luster. The strike is very sharp and the surfaces are devoid of significant marks. . . . . #200693 \$450.00
- 1920. PCGS. MS-64. RD. . . . . #203862 \$89.00
- 1920-S. PCGS. MS-64+. RB. CAC. Nice subdued red luster with a touch of soft brown. Just over 200 have graded MS-64 with only

\*Item Code # is located next to price.



2 coins receiving a 'plus' designation.  
 ..... #227197 \$995.00



- 1919-S. PCGS. MS-65. RD. Beautiful rich copper-red luster and a sharp strike with outstanding surfaces that show no significant marks. Truly scarce at this quality level with a 'Red' designation. Only 3 have graded numerically finer at PCGS. . . #227384 \$6750.00
- 1921-S. PCGS. MS-64. BN. A pleasing well struck example of this scarce date w/glossy brown surfaces that have an attractive lavender & lime-green hue. . . #225828 \$425.00
- 1921-S. PCGS. MS-64. RB. Well struck with lots of mint red blending evenly with soft brown. . . . . #138307 \$549.00
- 1922-D. PCGS. MS-64. RB. Well struck and mostly red with dramatic reverse die breaks. . . . . #209057 \$359.00
- 1922-D. PCGS. MS-64. RD. Vibrant mint red luster and a sharp strike. . . . #200777 \$495.00
- 1923. PCGS. MS-64. RD. . . . . #222484 \$89.00
- 1923. PCGS. MS-65. RD. CAC. 'Fresh' original blazing red luster. . . . . #203253 \$425.00
- 1924. PCGS. MS-65. RD. Original full red luster and a sharp strike. . . . #200854 \$450.00
- 1925. PCGS. MS-64. RD. . . . . #228961 \$79.00
- 1925-D. PCGS. MS-64. RB. Mint red and soft-brown luster w/a sharp strike. #207240 \$295.00
- 1925-D. PCGS. MS-64. RD. Flashy copper-red luster and well struck. . . . . #203169 \$445.00
- 1926-S. PCGS. MS-64. RB. Glossy even reddish-brown luster over pleasing surfaces that are spot-free & nearly mark-free. #128013 \$1095.00
- 1927. PCGS. MS-66+. RD. Gorgeous full blazing red luster. . . . . #200769 \$499.00
- 1927-D. PCGS. MS-65. RB. CAC. Well struck and free of significant marks with gorgeous lustrous surfaces that are nearly full red. . . . . #229085 \$575.00
- 1927-S. PCGS. MS-64. RD. Flashy red luster with nice clean surfaces. A tough date with full mint red! . . . . . #227038 \$1429.00
- 1929. PCGS. MS-65. RD. . . . . #204616 \$119.00
- 1929. PCGS. MS-66. RD. Blazing full mint red. . . . . #139781 \$249.00
- 1929-D. PCGS. MS-65. RD. Well struck with nice original mint red luster. . #223939 \$489.00



1931-D. PCGS. MS-66. RD. Very precisely struck with rich 'original roll' mint red luster. The surfaces are very choice and free of significant marks. A better date that is scarce in this high of grade. 2 MS-66+ coins and a single MS-67 are all that have graded finer at PCGS. . . . . #227408 \$2750.00

- 1930-D. PCGS. MS-66. RD. Nice original full red luster and a sharp strike. . #206338 \$595.00
- 1930-S. NGC. MS-65. RD. . . . #211779 \$95.00
- 1931. PCGS. MS-66. RD. Sharply struck with beautiful blazing red luster. . #140850 \$349.00
- 1931-S. PCGS. MS-65. RD. Blazing red. . . . . #133576 \$499.00
- 1932. PCGS. MS-65. RB. . . . . #228967 \$69.00
- 1932. PCGS. MS-65. RD. . . . . #132647 \$99.00
- 1932. PCGS. MS-66. RD. Blazing original mint red! . . . . . #200437 \$279.00
- 1932. PCGS. MS-66+. RD. CAC. Impeccably preserved with rich blazing red luster. . . . . #229156 \$650.00
- 1932-D. PCGS. MS-65. RD. . . #126843 \$199.00
- 1933. PCGS. MS-66+. RD. CAC. Vibrant blazing red luster. . . . . #228753 \$525.00
- 1933-D. NGC. MS-65. RD. . . #140065 \$139.00
- 1933-D. PCGS. MS-66+. RD. CAC. Super flashy with blazing red luster. . . . #211704 \$750.00
- 1933-D. PCGS. MS-66+. RD. Beautiful blazing red luster over mark-free surfaces. . . . . #229155 \$595.00
- 1934. PCGS. MS-67+. RD. CAC. Beautiful blazing red luster. . . . . #223883 \$469.00
- 1934-D. PCGS. MS-66. RD. Flashy golden-red luster. . . . . #211908 \$215.00
- 1937. PCGS. PR-66+. RD. CAC. A nearly flawless full red proof. . . . #217283 \$949.00
- 1938. PCGS. PR-66. RD. Blazing red and spot-free. . . . . #206809 \$295.00
- 1940. PCGS. PR-66. RD. A flashy full red proof. . . . . #225699 \$295.00
- 1941. PCGS. PR-64. RD. . . . . #128442 \$95.00
- 1942. PCGS. PR-65. RD. . . . . #200667 \$149.00
- 1942-D. PCGS. MS-67+. RD. CAC. Beautiful blazing full red luster! . . . . #227047 \$550.00
- 1943-D. PCGS. MS-67. . . . . #126814 \$149.00
- 1943-S. PCGS. MS-67. . . . . #126813 \$199.00
- 1947-D. PCGS. MS-67. RD. A superb full red Gem. . . . . #201201 \$249.00
- 1947-S. PCGS. MS-67. RD. Beautiful original red luster. . . . . #211632 \$215.00
- 1949. PCGS. MS-66. RD. . . . . #218145 \$85.00
- 1949-D. PCGS. MS-66+. RD. . #229056 \$125.00
- 1950. PCGS. PR-65. RD. Cameo. #228895 \$179.00



- 1950. PCGS. PR-67. RD. Cameo. An amazing blazing red Superb Proof with a stunning 'Cameo' resulting from dramatic contrast between the super deep mirrored fields and the heavily frosted design elements. . . . . #221009 \$1695.00
- 1953. PCGS. MS-66+. RD. Fantastic quality with beautiful blazing red surfaces. #212420 \$325.00
- 1955 Doubled Die Obverse. PCGS. AU-55. CAC. Glossy light brown surfaces with just the barest trace of 'rub'. . . #136273 \$1695.00
- 1955 Doubled Die Obverse. PCGS. MS-64. RB. CAC. Vibrant luster and a sharp strike with a beautiful blend of original mint red and soft brown. . . . . #216259 \$5375.00



- 1955 Doubled Die Obv. PCGS. MS-63. BN. Lustrous light chocolate brown surfaces & a sharp strike. Just a tiny trace of red peeks out here and there on the obv. . #227214 \$2495.00
- 1955-S. PCGS. MS-67+. RD. Only a single MS-68RD has graded finer and that coin sold in auction way back in 2002 for \$7475. . . . . #229176 \$499.00
- 1972/72. PCGS. MS-65. RD. Nice blazing red luster on this popular error. . #204395 \$585.00



- 1972/72. PCGS. MS-67. RD. Incredible quality with blazing mint red luster over virtually perfect surfaces. A coin that has remained nearly unchanged since dropping off the dies! . . . . . #217571 \$2595.00

**Two-Cent Pieces**

- 1864 Large Motto. PCGS. MS-63. BN. CAC. Nice lustrous surfaces with remnants of mint red. . . . . #210624 \$229.00
- 1864 Large Motto. PCGS. MS-65. RB. CAC. Beautiful fiery red blends with glossy brown. The strike is strong and the surfaces are nearly flawless. . . . . #134351 \$595.00
- 1864 Small Motto. PCGS. VF-20. Solid detail w/nice light brown surfaces. #129697 \$469.00
- 1864 Small Motto. PCGS. VF-25. BN. Problem-free with nice detail. . . . . #129696 \$595.00
- 1864 Small Motto. PCGS. VF-35. CAC. Beautiful problem-free light chocolate brown surfaces & nearly XF detail. . #224826 \$689.00
- 1865. PCGS. MS-65. BN. CAC. Silky smooth soft brown surfaces with a nice dose of mint red. . . . . #218712 \$425.00
- 1865. PCGS. MS-65. RB. CAC. A sharp strike w/vibrant red & brown luster. #213805 \$595.00
- 1866. PCGS. MS-65. BN. CAC. Sharply struck with lustrous brown surfaces that retain a trace of red. . . . . #223736 \$499.00



- 1866. PCGS. PR-65. BN. CAC. Lovely reflective proof surfaces with a flashy blend of golden-red and light brown. Exceptionally nice for the grade with a bold strike & nearly flawless surfaces. Just 725 minted. . . #227458 \$895.00
- 1867. NGC. PF-65. RB. Very flashy with deep reflective surfaces that are nearly full red. The strike is as sharp as you would expect on a

- Gem Proof & there are no noteworthy marks or spots. Only 625 minted.. #210231 \$1049.00
1867. PCGS. PR-64. RD. Very flashy w/blazing red luster over deep mirrored surfaces. Just 625 minted. Early holder. . . #222126 \$1695.00
1869. PCGS. PR-64. BN. Very attractive with soft glossy brown surfaces and a trace of red. . . . . #207127 \$595.00
1870. PCGS. MS-64. RB. CAC. Rich lustrous surfaces that are free of significant marks and retain considerable original mint red. . . . . #209201 \$750.00
1870. PCGS. PR-64. RB. CAC. Virtually flawless deep mirror surfaces and nice reddish-brown color. Premium quality for a Proof-64! . . . . . #138883 \$895.00
1870. PCGS. PR-64. RD. Precisely struck with spot-free mint red surfaces. Tough to find Proof Two Cent Pieces that truly are full red! . . . . . #222457 \$1495.00
1870. PCGS. PR-65. RB. CAC. Mostly red and well struck w/very attractive mirrored surfaces and outstanding eye appeal. Approximately 1,000 proofs minted. . . . . #204628 \$1395.00



1870. PCGS. PR-66. RB. CAC. Gorgeous iridescent copper-red and lavender surfaces. The strike is sharp and the eye appeal is outstanding. . . . . #228852 \$3495.00
1871. PCGS. PR-65. RD. Beautiful mint red luster over nearly flawless deep mirrored proof surfaces with a needle-sharp strike. . . . . #225468 \$2995.00



1872. PCGS. MS-65. RB. Sharply struck with flashy proof-like surfaces that are covered with a beautiful blend of fiery red and burgundy luster. The 'key' business strike in the series. PCGS pop: 20 in 65 (2 in 65+), 3 finer. . . . . #229053 \$8250.00
1872. PCGS. PR-64. RD. Flashy mint red luster & a sharp strike off highly reflective proof surfaces. Just 950 proofs & 65,000 business strikes minted for this scarce date.. #229023 \$1295.00



- 1873 Close 3. PCGS. PR-66. BN. CAC. Beautiful proof mirrored surfaces with glimpses of

red blending with rich mahogany and a faint hue of ice-blue. The strike is razor sharp and the eye appeal is superb! A proof-only date with just 600 minted. . . . . #222171 \$5695.00

**Silver Three-Cent Pieces**

1852. NGC. MS-67. A solid strike with essentially perfect surfaces and vibrant cream-white luster. . . . . #221344 \$2995.00
1852. PCGS. MS-64. Cream-white luster with a touch of toning. . . . . #226304 \$425.00
1852. PCGS. MS-66. Nice original cream-white luster with just a sprinkle of color and nearly flawless surfaces. . . . . #211271 \$1295.00
1854. PCGS. MS-64. Well struck and problem-free w/lustrous surfaces that have attractive light lavender and champagne hues. . . . . #213614 \$1295.00
1857. NGC. MS-64. Well struck with crisp white luster. . . . . #130566 \$1095.00
1857. PCGS. MS-65. Very well struck for a Type-2 'Trime' as these often come very weakly struck. The surfaces are particularly nice and problem-free with vibrant champagne-white luster.. . #225566 \$2875.00
1862. PCGS. MS-65+. CAC. Rich satiny white luster over nearly mark-free surfaces. Wonderful eye appeal. . . . #229052 \$1325.00
- 1862/1. PCGS. MS-66. Well struck with flashy white luster. Clear clashing seen on both sides. . . . . #202416 \$1950.00
- 1862/1. PCGS. MS-66. CAC. Beautiful frosty white luster over exceptionally nice surfaces. . . . . #228996 \$1995.00



1868. PCGS. PR-66. CAM. CAC. A nearly flawless Premium Gem with rich toning of lime-green and gold. A scarce date with just 600 proofs and 3,500 business strikes minted. Only 3 have graded numerically finer at PCGS.. . . . #222349 \$4295.00
1870. PCGS. PR-64. CAM. CAC. Flashy champagne-gold surfaces with pleasing frost on the design. The strike is very sharp and the eye appeal is outstanding. . #229168 \$1595.00
1871. PCGS. PR-65. A beautiful proof with frosted design features and nice mirrored fields. Only 960 proofs and 3,400 business strikes minted. . . . . #227323 \$1565.00

**Nickel Three-Cent Pieces**



1865. PCGS. PR-66. CAM. A high quality example of this scarce proof which saw a mintage of just 500. This example is nearly flawless w/ultra deep mirrored fields which contrast beautifully with heavily frosted design features.. . . . #223836 \$4995.00

1865. NGC. MS-65. Well struck with nearly flawless surfaces and flashy brilliant mint luster. . . . . #205801 \$475.00
1869. NGC. PF-66. CAM. CAC. A needle-sharp strike with deep mirrored brilliant fields that contrast beautifully with the white frosted design features.. . . . #223990 \$1169.00
1870. PCGS. MS-64. Nice flashy luster and a sharp strike. . . . . #126961 \$289.00
1871. PCGS. PR-64. A pleasing proof with a needle-sharp strike. Just 960 minted. . . . . #228896 \$395.00
1875. PCGS. MS-66. A fairly modest mintage and truly scarce in high grade. This example is exceptionally nice with satiny brilliant luster & a very sharp strike. #225444 \$1295.00



1877. PCGS. PR-66. CAM. CAC. An outstanding blast white coin w/deep reflective fields and heavily frosted design features. Super eye appeal and premium quality for the grade. . . . . #223131 \$4995.00
1878. NGC. PF-66. CAM. Beautiful blast white surfaces with frosted design elements. Only 2,350 minted in this scarce proof-only year! . . . . . #201905 \$1049.00
1878. PCGS. PR-64. CAM. Blast white with terrific 'cameo' contrast. A proof-only date with 2,350 minted. . . . . #120265 \$845.00
1878. PCGS. PR-66. CAC. This Premium Gem exhibits a needle-sharp strike and superb highly reflective proof surfaces. A proof-only issue with a mintage of just 2,350 coins. . . . . #200654 \$1049.00
1879. PCGS. PR-65. Flashy proof surfaces with excellent eye appeal. . . #200553 \$499.00
1880. PCGS. MS-64. Well struck with satiny mint luster. 21,000 minted. . #137723 \$589.00
1880. PCGS. MS-65. CAC. A wonderful example of this better date with blazing mint luster over nearly flawless surfaces. The strike is razor sharp. . . . #227385 \$935.00
1880. PCGS. MS-66. Incredible quality with bright white luster and a needle-sharp strike. Only 21,000 business strikes minted. Most high grade survivors of this better date are proofs. . . . . #201166 \$1049.00
1880. PCGS. MS-66. CAC. Very sharply struck and devoid of significant marks with vibrant mint luster. Just 21,000 business strikes minted. . . . . #227221 \$1125.00
1880. PCGS. PR-67. CAC. Super flashy surfaces and a great strike w/no significant abrasions. Super quality! . . . . . #227163 \$995.00
1880. PCGS. PR-67. Flashy white luster and a razor sharp strike. The surfaces are virtually perfect and the eye appeal is exceptional. . . . . #227267 \$975.00
1882. PCGS. PR-66. Blazing luster and a needle-sharp strike. . . . . #139087 \$599.00
1883. NGC. PF-64. Very sharp strike and flashy proof surfaces. . . . . #200546 \$359.00

\*Item Code # is located next to price.



- 1883. PCGS. PR-66. CAM. Bright white luster with heavily frosted devices! Super quality! . . . . . #140150 \$789.00
- 1883. PCGS. PR-67. CAM. CAC. Fantastic quality with blazing brilliant luster and a wonderful 'black & white' cameo contrast. . . . . #229157 \$1250.00
- 1886. NGC. PF-66. Flashy white luster and a great strike with nearly perfect surfaces. . . . . #125339 \$609.00
- 1886. PCGS. PR-66. CAC. A nice original Premium Gem example of this better proof-only date. 4,290 minted. . . #204061 \$695.00
- 1886. PCGS. PR-67. CAM. CAC. Incredible quality with blazing brilliant luster over pristine surfaces. The strike is needle-sharp with heavy frost on the design and super deep mirrored fields. . . . . #229167 \$1625.00



- 1887/6. PCGS. PR-67. CAM. CAC. Strong Overdate. Spectacular quality with blast white luster and strong cameo contrast. The surfaces are virtually flawless and the strike is super sharp. None have graded numerically finer at PCGS. . #228997 \$4995.00
- 1888. PCGS. MS-66. An extremely well struck coin w/super flashy luster and no significant marks. Only 36,500 business strikes minted with most surviving high grade 1888 Three Cent Pieces being Proofs. . . #205788 \$975.00
- 1888. PCGS. MS-67. A super sharp strike and booming mint luster on this beautiful Superb Gem. Just 36,500 struck with just a single coin grading numerically finer at PCGS. . . . . #202920 \$2350.00

**Shield Nickels**

- 1867 No Rays. PCGS. PR-64. CAC. A pleasing brilliant proof. 600 minted. . #227203 \$939.00
- 1867 No Rays. PCGS. PR-64. CAM. A pleasing blast white proof with strong 'cameo' contrast. . . . . #229110 \$899.00
- 1868. PCGS. MS-66. Flashy brilliant mint luster w/pleasing clean surfaces. Only 2 have graded numerically finer at PCGS. . #227179 \$1295.00
- 1875. PCGS. PR-65. Bright lustrous surfaces with mirrored fields and a touch of frost on the design. . . . . #138295 \$995.00



- 1877. PCGS. PR-66. CAM. CAC. Beautiful deep mirror surfaces and a needle-sharp strike. Nice frost on the design produces a stunning 'cameo'. . . . . #223780 \$6695.00
- 1878. NGC. PF-66. CAC. Gorgeous blast white surfaces with beautiful deep mirrored fields. The strike is needle-sharp & the eye appeal

- is exceptional. A proof-only date with just 2,350 minted. . . . . #127772 \$1569.00
- 1879. NGC. PR-65. Flashy white luster with light frost on the design elements and nice reflective mirrored fields. . . #229177 \$569.00
- 1879/8. PCGS. PR-66. Flashy blast white surfaces with nice frost on the design and fantastic eye appeal. . . . . #203129 \$1150.00
- 1882. PCGS. MS-65. Rich brilliant luster and a sharp strike. . . . . #204579 \$525.00
- 1882. PCGS. MS-66. Satiny brilliant luster over choice surfaces. Well struck. #220201 \$895.00
- 1882. PCGS. PR-64. Nice lustrous mirrored surfaces and a sharp strike. . #137734 \$389.00
- 1883. PCGS. PR-67. Beautiful rich brilliant luster off nice mirrored surfaces with a very sharp strike. . . . . #210325 \$1249.00
- 1883/2. PCGS. AU-58. CAC. A well-detailed and nearly mint state example of this popular over-date. The 2 is clear and dramatically left of the 3. . . . . #229126 \$1995.00



- 1883/2. PCGS. MS-63. Extremely well struck with satiny mint luster and no significant marks. . . . . #223800 \$2350.00
- 1883/2. PCGS. VF-35. FS-302. Problem-free with pleasing light nickel-gray surfaces. . . . . #228981 \$975.00

**Liberty Nickels**

- 1883-N/C. PCGS. MS-65. Nice bright mint luster. . . . . #200560 \$209.00
- 1883-N/C. PCGS. MS-66+. CAC. Flashy satiny white surfaces that are devoid of significant marks. . . . . #225054 \$779.00
- 1883-W/C. PCGS. MS-63. Well struck/nice original lustrous surfaces. . . #130763 \$209.00
- 1884. PCGS. MS-65. A beautiful example of this better date with vibrant luster and a sharp strike. . . . . #222806 \$1169.00
- 1884. PCGS. PR-65. CAC. A beautiful premium quality example of this better date. Virtually mark-free with rich luster and a very faint gold hue. . . . . #206387 \$575.00
- 1886. PCGS. AU-55. CAC. Vibrant brilliant luster w/just a touch of wear. #128354 \$995.00
- 1886. PCGS. PR-66. A fabulous example of this better date with blast white luster over a sharp strike and virtually perfect surfaces. . . . . #225317 \$1139.00
- 1886. PCGS. PR-66. CAC. A nearly perfect example of this better date with satiny white luster and modest frost on the design. Super quality! . . . . . #206035 \$1189.00
- 1887. PCGS. MS-64+. A well struck example of this better date with rich brilliant luster. . . . . #220985 \$469.00
- 1887. PCGS. PR-65. CAC. Blast white & flashy with a razor sharp strike. . . #118007 \$549.00
- 1887. PCGS. PR-66. CAM. CAC. Super flashy brilliant luster with frosted devices and flaw-

- less mirrored fields. A tough date in 'Cameo'. . . . . #229009 \$2875.00
- 1888. PCGS. PR-66. CAC. AN exceptionally nice Premium Gem with a pleasing light golden-green hue. . . . . #218743 \$685.00
- 1889. PCGS. MS-62. . . . . #219311 \$189.00
- 1889. PCGS. MS-65. Bright lustrous surfaces. Free of any significant marks. #212921 \$699.00
- 1889. PCGS. PR-66. CAC. Fabulous blazing brilliant luster with modest frost and nearly flawless surfaces. Outstanding for the grade and great eye appeal. . . . . #202291 \$759.00



- 1890. PCGS. MS-66. Flashy brilliant luster and a sharp strike. . . . . #223322 \$1750.00
- 1891. PCGS. PR-64. A pleasing brilliant proof with a sharp strike and nice mirrored fields. . . . . #132958 \$355.00
- 1891. PCGS. PR-65. A nice brilliant proof with lightly frosted design features. #229175 \$489.00
- 1892. NGC. XF-45. . . . . #227420 \$95.00



- 1892. PCGS. PR-66+. CAM. CAC. Flashy brilliant mirrored surfaces w/nicely frosted design elements. The strike is razor sharp and a faint blue hue gives this coin tremendous eye appeal. . . . . #228992 \$1365.00
- 1893. PCGS. PR-66+. CAC. Super flashy w/bright champagne tinted surfaces. . #229074 \$850.00
- 1897. PCGS. MS-64. Rich luster with nice clean surfaces. Outstanding for the grade. . . . . #127260 \$259.00
- 1898. PCGS. MS-65. Crisp lustrous surfaces and a bold strike with no significant marks. . . . . #204947 \$525.00
- 1899. PCGS. MS-65. Brilliant satiny luster and a very sharp strike. . . . #223759 \$419.00
- 1900. PCGS. MS-65. Crisp white luster on satiny surfaces. . . . . #134354 \$399.00
- 1900. PCGS. PR-66. CAC. A nearly flawless turn-of-the-century 'V' Nickel w/flashy proof surfaces and a great strike. . #228810 \$675.00
- 1903. PCGS. MS-65. Well struck w/satiny luster over nice clean surfaces. . . #222801 \$389.00
- 1903. PCGS. MS-66. CAC. Blazing luster and a sharp strike with nearly pristine surfaces. . . . . #225504 \$749.00
- 1903. PCGS. MS-66+. Nearly flawless surfaces and a sharp strike with crisp brilliant luster. . . . . #222158 \$1350.00
- 1904. PCGS. MS-65. Beautiful satiny surfaces with no significant marks. . . #134420 \$395.00
- 1906. PCGS. MS-65. Crisp brilliant luster and a solid strike with no significant abrasions. . . . . #222559 \$489.00

- 1907. NGC. PF-65. Flashy white luster with nice frost on the design. . . . #227817 \$499.00
- 1907. PCGS. MS-63. . . . . #130728 \$129.00
- 1908. PCGS. MS-64. . . . . #225533 \$195.00
- 1908. PCGS. PR-67. A beautiful flashy Superb Gem w/a needle-sharp strike and essentially flawless surfaces. Super! . . #227324 \$1295.00
- 1909. NGC. PF-65. CAC. Highly reflective mirrored fields with nice frosty devices and a light champagne-gold hue. #131901 \$549.00



- 1909. PCGS. PR-67. CAC. Gorgeous original surfaces, thick luster, & a subtle champagne patina that suggests this well preserved Gem hasn't seen the light of day since shortly after it was minted over a century ago! . . . . . #207560 \$1295.00
- 1910. PCGS. MS-64. . . . . #201339 \$195.00
- 1911. PCGS. MS-64. Rich satiny luster and a strong strike. . . . . #133876 \$179.00
- 1911. PCGS. MS-65. Nearly flawless surfaces with satiny mint luster. . . . #204621 \$389.00
- 1912-D. PCGS. MS-65. Satiny luster with mark-free surfaces. A better date and the only 'D' Mint in the series. . #210525 \$1595.00

**Buffalo Nickels**

- 1913 T-1. PCGS. MS-64. . . . . #122341 \$75.00
- 1913 T-1. PCGS. MS-66. Rich lustrous surfaces. . . . . #124657 \$239.00
- 1913 T-1. PCGS. MS-66+. Beautiful flashy luster and a sharp strike. . . . #217994 \$359.00



- 1913 T-1. PCGS. PR-66. CAC. A needle-sharp strike w/super lustrous matte proof surfaces that are devoid of any noteworthy marks. Super quality! . . . . . #221592 \$4625.00
- 1913-D T-1. PCGS. MS-65. Flashy brilliant luster and a great strike. . . . #127355 \$279.00
- 1913-D T-1. PCGS. MS-66. CAC. A virtually flawless Premium Gem with satiny mint luster and a great strike. . . . #117650 \$699.00
- 1913-D T-2. PCGS. AU-58. CAC. Well struck with original lustrous surfaces. Looks like an MS-63! . . . . . #216114 \$299.00
- 1913-ST-1. NGC. MS-66. Well struck with vibrant mint luster over nearly flawless surfaces. . . . . #228957 \$1095.00
- 1913-ST-1. PCGS. MS-64. CAC. Nearly mark-free with nice original lustrous surfaces. . . . . #229087 \$295.00
- 1913-ST-2. PCGS. MS-62. CAC. Shimmering luster with nice clean surfaces. A tough CAC approved date/grade. . #123248 \$1095.00
- 1914. PCGS. AU-58. CAC. . . . . #222904 \$69.00

- 1914-D. PCGS. AU-58. CAC. Well struck and lustrous. Looks uncirculated! #200188 \$389.00
- 1914-D. PCGS. MS-62. A lustrous, well struck example of this better date. . #209755 \$435.00
- 1914-D. PCGS. MS-63. CAC. Satiny luster over beautiful surfaces that are free of significant marks. . . . . #124650 \$549.00
- 1914-S. PCGS. MS-65. Well struck with matte-like surfaces and vibrant brilliant luster. . . . . #205945 \$1950.00
- 1915-D. PCGS. MS-66. CAC. Intense brilliant mint luster w/beautiful satiny smooth surfaces and a strong strike. Population: 37 in 66 (3-66+) & just 3 finer in 67. #212246 \$3995.00
- 1915-S. PCGS. XF-40. CAC. Strong detail and nice original surfaces. . . . . #220273 \$375.00
- 1916. PCGS. MS-65. Rich blazing luster and a sharp strike. . . . . #221334 \$285.00
- 1916. PCGS. MS-66. Well struck & mark-free with rich satiny luster. . . . . #227015 \$669.00
- 1916-D. PCGS. AU-58. CAC. . . #205138 \$139.00
- 1917. PCGS. MS-64. Well struck and lustrous. Nice for the grade. . . . . #140286 \$229.00
- 1917. PCGS. MS-65. Blazing luster & a sharp strike. . . . . #202509 \$495.00



- 1917-S. PCGS. MS-66. CAC. An exceptional example of this better date w/a sharp strike and very flashy mint luster. PCGS Population: 24 in 66 (1 in 66+), 0 finer. #223801 \$6795.00
- 1918. PCGS. MS-64. Well struck with lustrous original surfaces with subtle gold, turquoise and rose hues. . . . . #140855 \$475.00
- 1918. PCGS. MS-65. Rich flashy mint luster and a solid strike. Outstanding eye appeal. . . . . #203505 \$1195.00
- 1919. PCGS. MS-64. Satiny white luster and a strong strike. . . . . #204297 \$229.00
- 1919. PCGS. MS-64. CAC. . . . #201822 \$249.00
- 1919-S. PCGS. VF-35. . . . . #229046 \$149.00
- 1920. PCGS. MS-65. CAC. Nice brilliant luster and a sharp strike. . . . #123597 \$675.00
- 1920-S. PCGS. AU-50. CAC. . . #229089 \$299.00



- 1921. PCGS. MS-67. An amazing Superb Gem with booming white luster and a razor-sharp strike. The surfaces are nearly perfect and the luster is as fresh as the day it was born! Tied for the finest graded at PCGS. #221803 \$4875.00
- 1924. PCGS. MS-64. Well struck with shimmering luster. . . . . #202440 \$375.00
- 1925-D. PCGS. MS-64. CAC. Satiny luster and very nice surfaces with an above average strike. . . . . #140325 \$1795.00

- 1925-D. PCGS. MS-65. CAC. Satiny original brilliant luster over beautiful surfaces that are free of significant marks. #229007 \$3875.00
- 1926. PCGS. MS-64. . . . . #206069 \$105.00
- 1926. PCGS. MS-66. CAC. Flashy luster and a sharp strike. . . . . #212934 \$595.00



- 1926-S. PCGS. AU-53. CAC. Strong detail with choice original problem-free surfaces. . . . . #229057 \$2875.00
- 1926-S. PCGS. XF-45. CAC. Strong detail with pleasing light nickel-gray surfaces. Outstanding for the grade with none of the planchet problems that often plague this date. . . . . #229103 \$1225.00
- 1927. PCGS. MS-65. CAC. Flashy brilliant luster and a strong strike. . . #228942 \$249.00
- 1927. PCGS. MS-66+. CAC. Beautiful crisp luster and a sharp strike with outstanding eye appeal. . . . . #205856 \$895.00
- 1928. PCGS. MS-65. Flashy bright luster and well struck. . . . . #209541 \$249.00
- 1928-D. PCGS. MS-65. Sharply struck with satiny luster. . . . . #203825 \$525.00
- 1928-S. PCGS. AU-58. CAC. . . #228193 \$209.00
- 1929. PCGS. MS-66. Blazing brilliant luster w/a very faint ice-blue hue. Super! #202213 \$749.00
- 1929-S. PCGS. MS-65. Blazing white luster and a sharp strike. . . . . #200570 \$389.00
- 1930. NGC. MS-66. Very flashy mint luster and well struck with nice clean surfaces. . . . . #227464 \$455.00
- 1930. PCGS. MS-65. CAC. Vibrant brilliant luster. . . . . #201059 \$225.00
- 1930. PCGS. MS-65. . . . . #226385 \$199.00
- 1930. PCGS. MS-66. Fantastic blazing mint luster & a needle-sharp strike. #140901 \$499.00



- 1931-S. PCGS. MS-66+. Blazing luster and a sharp strike with outstanding eye appeal. . . . . #223829 \$1195.00
- 1934. PCGS. MS-65. Flashy luster and a sharp strike. . . . . #200847 \$195.00
- 1935-D. PCGS. MS-64. CAC. . . #129667 \$129.00
- 1935-D. PCGS. MS-65. Crisp luster and well struck. . . . . #123032 \$279.00
- 1935-D. PCGS. MS-66. CAC. Vibrant brilliant luster and a sharp strike. . . . #223287 \$875.00
- 1935-S. PCGS. MS-63. . . . . #124672 \$75.00
- 1935-S. PCGS. MS-66. CAC. Thick mint luster and a sharp strike. . . . . #224287 \$395.00
- 1936. PCGS. MS-66. . . . . #122337 \$99.00
- 1936. PCGS. PR-66. CAC. Type 2 (Brilliant). Fantastic eye appeal w/incredible reflective surfaces that are ablaze w/neon green & red

\*Item Code # is located next to price.



- under-tones. A wonderful choice for the collector that loves neat color! #124626 \$2095.00  
 1936-S. NGC. MS-65. . . . . #122318 \$89.00  
 1937. NGC. MS-67. A beautiful superb Gem! . . . . . #206642 \$295.00  
 1937. PCGS. PR-66. CAC. Vibrant luster and needle-sharp strike. The surfaces are nearly pristine. . . . . #228713 \$1395.00



- 1937-D 3 legs. NGC. MS-62. Well struck with rich lustrous surfaces & a pleasing faint ice-blue hue. The coin is devoid of significant marks and possesses outstanding eye appeal. . . . . #130039 \$2325.00  
 1937-D 3 legs. PCGS. XF-40. Strong detail with pleasing original surfaces that retain a trace of luster. . . . . #224485 \$615.00  
 1937-D. PCGS. MS-67. CAC. Blazing luster & a sharp strike with outstanding eye appeal. The perfect 'type' coin. . . . . #139078 \$895.00  
 1938-D. NGC. MS-67+. Well struck with super flashy mint luster over pristine surfaces. . . . . #228774 \$489.00  
 1938-D. PCGS. MS-67. . . . . #125503 \$195.00  
 1938-D/S. PCGS. MS-66. CAC. #122316 \$239.00

**Jefferson Nickels**

1950. PCGS. PR-67. CAM. Blast white luster with strong cameo contrast. . #227049 \$449.00  
 1950-D. PCGS. MS-66. FS. . . . #131188 \$115.00  
 1954-S/D. PCGS. MS-66. Flashy luster with pleasing surfaces. One of 8 coins graded MS-66 at PCGS. None have graded finer! . . . . . #228868 \$1250.00

**Bust Half Dime**

1829. PCGS. MS-63. Vibrant mint luster and a needle-sharp strike with light mainly peripheral toning. Outstanding for the grade with excellent eye appeal. . . . . #229154 \$975.00

**Seated Liberty Half Dimes**



1837. PCGS. MS-63. CAC. No Stars, Small Date. Battleship gray with a lovely iridescent blue hue. . . . . #125925 \$1049.00  
 1840. PCGS. MS-65. CAC. No Drapery. Razor sharp strike with virtually flawless surfaces, rich mint luster and a blush of golden toning. Outstanding quality! . . . . #201868 \$1995.00  
 1847. PCGS. MS-65. CAC. Very well struck with nice original frosty mint luster and a wisp of light russet-gold toning. A Gem with no significant marks. . . . . #206755 \$1195.00  
 1851. PCGS. MS-64. A near-Gem with cream-white luster & a sharp strike. #225296 \$535.00

1856. PCGS. MS-64. CAC. Well struck with clean surfaces coated with crisp silver-white luster. . . . . #133373 \$489.00



1857. PCGS. PR-65. CAC. Old time 'cabinet-toning' of gorgeous sea-green and dove-gray with rose and turquoise hues. The strike is bold and the surfaces are pristine. Only about 70 minted! . . . . . #225672 \$5495.00  
 1866. PCGS. PF-64. CAM. CAC. Blast white with nicely frosted devices. 725 minted with few receiving a 'Cameo' designation. . . . . #205713 \$1095.00  
 1871. PCGS. MS-64. Sharply struck & mostly white with frosty luster and a touch of russet toning primarily at the borders. #216924 \$469.00

**Bust Dimes**



1801. PCGS. VF-20. CAC. Well detailed with exceptionally nice steel-gray surfaces and wonderful eye appeal. Just 34,640 minted. . . . . #229063 \$4250.00  
 1809. PCGS. VF-35. The first coin in the Capped Bust Dime series & a better date w/a mintage of 51,065. This nice two-toned gray example has nearly XF detail. . . . . #229066 \$2995.00  
 1831. PCGS. XF-40. Very attractive steel-gray surfaces. . . . . #229106 \$285.00

**Seated Liberty Dimes**

1838. PCGS. AU-55. No Drapery, Large Stars. Strong detail and brilliant lustrous surfaces with a neat die crack nearly bisecting the obverse. . . . . #223446 \$359.00  
 1838-O. PCGS. VF-30. No Stars. The first New Orleans mint dime. Strong detail and pleasing surfaces. . . . . #229145 \$469.00  
 1843-O. PCGS. F-12. Scarce in any grade with a modest 150,000 minted. . . #224579 \$495.00  
 1859. PCGS. MS-65. A spectacular blast white example of this better date. The strike is extremely sharp & the surfaces are virtually mark-free. Super quality! . . #202303 \$1995.00



- 1860-O. PCGS. XF-40. CAC. The last New Orleans mint dime as the outbreak of the Civil War in 1861 saw the Confederacy occupy the Mint. This example has strong detail and very pleasing original color and surfaces. Just 40,000 minted with a low survival rate. . . . . #225627 \$4250.00

- 1860-S. PCGS. XF-40. Just 140,000 minted with a low survival rate. This is an attractive, well detailed example. . . . . #227331 \$595.00  
 1861. PCGS. MS-64. CAC. '1/0'. The so-called overdate as what appears to be remnants of a '0' can be seen beneath the '1' of the date. This is a well struck and attractive example. . . . . #228993 \$1395.00  
 1863-S. PCGS. VF-30. 157,000 minted a low survival rate of mostly low grade coins. A well-detailed example. . . #229059 \$489.00



- 1866-S. NGC. AU-53. Only 135,000 minted and a date that seems much scarcer than that modest mintage suggests. Strong detail with light silver-gray surfaces that are slightly rough as is the norm for this date. #229013 \$1495.00



- 1873-S. PCGS. MS-64+. CAC. Arrows. 455,000 minted yet very few have survived in high grade. This is one of only two 64+ coins graded by PCGS with only three 65 coins grading higher at that service. This near-Gem example is extremely well struck with bold satiny luster beneath a light golden hue. . . . . #216110 \$4750.00  
 1874. PCGS. MS-64. Well struck with thick frosty mint luster & a very light champagne hue. A pleasing example of this short-lived 'Arrows' type. . . . . #208169 \$1595.00  
 1877. PCGS. MS-64. Rich pasty white luster and a sharp strike. . . . . #229178 \$455.00  
 1884. NGC. MS-65. CAC. Radiant cream white with amber and gold towards the rim. Super eye appeal. . . . . #206929 \$695.00  
 1885. NGC. PF-65. CAM. Sharply struck with deep mirrored surfaces and frosted devices. Light golden toning gives a nice antique 'look' to this flashy Gem. . . #207658 \$1095.00  
 1886. PCGS. PR-64. Nice flashy surfaces with a faint champagne hue. #123085 \$699.00  
 1886. PCGS. PR-66. CAM. Blast white with frosted design features and nearly flawless surfaces. . . . . #229024 \$1495.00  
 1887. PCGS. MS-65. Crisp white luster and a solid strike. . . . . #201738 \$625.00  
 1887. PCGS. MS-66. Satiny cream-white luster and a sharp strike. . . . . #226504 \$1095.00  
 1888. PCGS. MS-66. Crisp eggshell white luster with pleasing surfaces & a solid strike. Just 2 have graded numerically finer. #227145 \$975.00  
 1891. NGC. PF-65. CAM. Blast white and a sharp strike with excellent cameo contrast. . . . . #227151 \$1095.00  
 1891. PCGS. MS-64. Well struck and lustrous with a cream-white obverse and a touch of champagne on the reverse. . #124240 \$419.00

- 1891. PCGS. MS-65. CAC. A steel-gray core with light golden-brown toning. . . #223550 \$675.00
- 1891. PCGS. MS-65. A frosty white core with a touch of toning at the obverse rim. Outstanding for the grade. . . #225397 \$559.00
- 1891. PCGS. PR-64. CAM. CAC. Crisp white w/frosted design features & highly reflective deep mirrored fields. . . . . #225801 \$895.00
- 1891. PCGS. PR-65. CAM. Blast white w/deep mirrored fields and very thick frost on the design. Super eye appeal. . . #225134 \$1195.00

**Barber Dimes**



- 1892-S. PCGS. MS-64. Well struck with a frosty white core and sage-green & gold over-tones. A scarce first year issue with 990,000 minted compared to over 12 million 'P' & just under 4 million 'O' mint coins . . . #229079 \$1450.00
- 1893. PCGS. PR-65. CAM. Flashy white luster with beautiful contrast between the frosted design elements and the very deep mirrored fields. . . . . #227456 \$1235.00
- 1900-S. PCGS. MS-63. Crisp luster and a sharp strike with minimal marks. . . #228828 \$425.00
- 1901. PCGS. PR-66. CAM. A beautiful Premium Gem w/a white core and delicate peripheral gold toning. The 'cameo' contrast is bold! . . . . . #229111 \$1750.00



- 1901-O. PCGS. MS-65. CAC. Satiny champagne-white luster and a sharp strike with excellent eye appeal. PCGS has graded 11 65's and 9 better. This is the only 65 to also garner CAC approval. . . . . #124180 \$2950.00
- 1904. PCGS. PR-64. Flashy brilliant luster and a needle-sharp strike. 670 proofs struck. . . . . #229152 \$695.00
- 1905-O. NGC. MS-64. Steel-gray lustrous surfaces and a needle-sharp strike. A scarce date in mint state. . . . . #228829 \$625.00
- 1905-S. PCGS. MS-66. CAC. Rich luster and a sharp strike with subtle shades of rose, sea-green and amber over a silver core. There are no significant marks and the eye appeal is excellent. Just 4 have graded numerically finer at PCGS. . . . . #228837 \$2250.00
- 1907. PCGS. MS-65. Satiny white luster and a sharp strike. . . . . #228830 \$439.00
- 1911-S. PCGS. MS-64. Crisp white luster and free of significant marks. . . . #229017 \$599.00
- 1912. PCGS. MS-66. A satiny white core with delicate russet toning on the obv. A sharp strike & nearly mark-free. . . . #228969 \$599.00
- 1912-S. PCGS. MS-65. CAC. Sharply struck with rich satiny luster w/a faint champagne hue. Super eye appeal! . . . #229034 \$1195.00

- 1913. PCGS. PR-66. CAM. Blast white and with no apparent flaws and beautiful cameo contrast. Super quality! . . . #228998 \$1849.00
- 1914. PCGS. MS-65. Blast white and a sharp strike. Perfect for a quality 'type' set. . . . . #229050 \$419.00
- 1916. PCGS. MS-63. . . . . #123979 \$179.00

**Mercury Dimes**



- 1916-D. PCGS. VG-10. CAC. Well detailed with pleasing light steel-gray surfaces. . . . . #207603 \$1950.00
- 1917-D. NGC. MS-62. . . . . #229102 \$199.00
- 1917-D. NGC. MS-63. . . . . #203279 \$309.00



- 1917-D. PCGS. MS-65. FB. Blazing mint luster with a whisper of golden toning. The entire coin is sharply struck including the central bands on the reverse. . . . . #207332 \$4250.00
- 1919. PCGS. MS-65. FB. Blazing white luster and a sharp strike. . . . . #224258 \$649.00
- 1919-D. PCGS. MS-62. FB. Crisp white luster and well struck. A very tough date to find with full band detail. . . . . #228847 \$1650.00
- 1923. PCGS. MS-66. FB. Satiny white luster and a great strike. . . . . #202500 \$489.00
- 1925. NGC. MS-65. FB. Satiny white luster and a sharp strike. . . . . #228917 \$649.00
- 1927. PCGS. MS-66. FB. Flashy white luster and a sharp strike. . . . . #228949 \$599.00
- 1929. NGC. MS-66. FB. Vibrant white luster and a sharp strike. . . . . #228919 \$369.00



- 1929. PCGS. MS-67. FB. Satiny white luster and a sharp strike. . . . . #211390 \$1375.00
- 1934-D. PCGS. MS-66. FB. Satiny white luster and a sharp strike. . . . . #212251 \$619.00
- 1935. PCGS. MS-67. FB. CAC. Blast white and nearly perfect. . . . . #225725 \$375.00
- 1936. PCGS. MS-66. FB. . . . . #203665 \$119.00
- 1937. NGC. PF-66+. Blast white and virtually flawless. . . . . #228775 \$585.00
- 1937. PCGS. MS-67. FB. CAC. Bright lustrous surfaces and a sharp strike. . . #203185 \$205.00
- 1937. PCGS. PR-66+. CAC. Flashy proof surfaces and mark-free. . . . #229179 \$625.00
- 1938. PCGS. MS-67. FB. CAC. Blast white and an excellent strike. . . . . #202585 \$450.00
- 1938-D. PCGS. MS-66. FB. . . #126984 \$109.00
- 1938-S. PCGS. MS-67. FB. Satiny white luster and a sharp strike. . . . . #211636 \$549.00

- 1939. PCGS. MS-67+. . . . . #225721 \$129.00
- 1939-D. PCGS. MS-67. FB. . . #135042 \$179.00
- 1940-S. PCGS. MS-67. FB. Blast white and semi proof-like. . . . . #210556 \$519.00
- 1941-D. PCGS. MS-67. FB. . . #126985 \$155.00
- 1941-D. PCGS. MS-67+. FB. CAC. Blast white. . . . . #227312 \$395.00
- 1941-S. NGC. MS-67. FB. Blast white. . . . . #136796 \$249.00
- 1941-S. PCGS. MS-67+. FB. CAC. Rich champagne-white luster and a sharp strike. . . . . #223442 \$499.00
- 1942. NGC. PR-67+. Blast white and virtually flawless. . . . . #228842 \$455.00
- 1942. PCGS. MS-67. FB. . . . #227393 \$249.00
- 1942. PCGS. PR-67. Blast white and nearly perfect. . . . . #203750 \$269.00
- 1942. PCGS. PR-67+. An essentially pristine proof that is well struck & has blazing mint luster. Attractive light toning on the obverse frames the coin beautifully and gives it a little extra pizzazz! . . . . . #219486 \$499.00
- 1942-S. PCGS. MS-67. FB. CAC. Satiny white luster and a full strike. . . . . #227524 \$450.00
- 1943-S. PCGS. MS-67. FB. Blast white. . . . . #136864 \$359.00
- 1944-S. NGC. MS-67. . . . . #133257 \$75.00
- 1944-S. NGC. MS-67. FB. . . . #137448 \$189.00
- 1945-S Micro 's'. PCGS. MS-66. FB. Beautiful satiny mint luster over nearly flawless surfaces. . . . . #201183 \$975.00
- 1945-S. NGC. MS-67. . . . . #222365 \$109.00

**Roosevelt Dime**

- 1983-S. PCGS. PR-69. DCAM. Flashy mirrored fields with heavily frosted design features. . . . . #211753 \$795.00

**Twenty Cent Piece**



- 1875-S. PCGS. MS-65. Well struck with rich satiny mint luster that shows a splash of golden-green toning. . . . . #213549 \$2595.00

**Bust Quarters**

- 1805. PCGS. G-4. Evenly worn with major detail plus the dates and legends clear. Problem-free. . . . . #203405 \$450.00



- 1806/5. PCGS. F-15. Solid detail with light silver-gray surfaces. A very clear overdate. . . . . #223335 \$1365.00

\*Item Code # is located next to price.



- 1806/5. PCGS. G-04. CAC. A well-worn but attractive early quarter with pleasing dove-gray surfaces. . . . . #130972 \$529.00
- 1820. PCGS. XF-40. Large O. Well detailed with pleasing steel-gray surfaces and a trace of luster in the most protected areas of the design. . . . . #211519 \$1450.00



- 1825/4(2). PCGS. AU-55. Browning-2. Sharp detail with nice lustrous steel-gray surfaces. . . . . #227387 \$2795.00

**Seated Liberty Quarters**

- 1842-O. PCGS. AG-3. CAC. Small Date. Well worn but problem-free w/a clear date, mint-mark and most of the stars and legend visible. . . . . #228790 \$489.00
- 1842-O. PCGS. G-6. CAC. Small Date. A 'key' date and scarce in any grade. This example is problem-free with very nice two-toned gray surfaces. . . . . #225190 \$779.00
- 1854-O. PCGS. F-15. CAC. Huge O. A Gem for the grade with solid detail and nearly flawless light gray surfaces.. #228988 \$2049.00
- 1865. PCGS. VF-25. A scarce & popular Civil War date with a mintage of just 58,800. . . . . #229060 \$450.00



- 1873. PCGS. PR-66. CAC. No Arrows. Sharply struck with virtually flawless surfaces and beautiful iridescent toning. . #227226 \$4495.00
- 1876-CC. PCGS. F-12. . . . . #229062 \$115.00
- 1884. PCGS. PR-66. CAM. Blast white on the obverse w/a light pinkish patina on the rev. Beautiful contrast exists between the deep mirrored fields & the very frosty devices. A scarce date with just 875 proofs & 8,000 business strikes minted. . . #206835 \$3250.00
- 1885. NGC. PF-65. CAC. Rich iridescent toning with collage of colors that vary depending upon the angle the coin is tilted. Housed in a very early NGC holder. Outstanding eye appeal. . . . . #224386 \$1695.00

**Barber Quarters**

- 1894. PCGS. PF-66. CAM. Wonderful rich toning. The obverse centers around golden russet with a peripheral ring of rainbow. The reverse has a crescent of multi-color blend. The area encompassing the eagle and stars is primarily white. Only 5 have graded numerically higher at PCGS. #204892 \$2495.00

- 1895-O. PCGS. MS-63. CAC. Bright satiny white luster & a great strike with nice clean surfaces. Looks better than an MS-63! . . . . . #208467 \$1195.00
- 1896-S. PCGS. AG-3. Clear date & mint-mark on this 'key' date. . . . . #131936 \$429.00
- 1896-S. PCGS. G-6. One of the 'keys' to the set with just 188,039 minted. This is a pleasing example with solid detail. . . #129084 \$825.00
- 1896-S. PCGS. VG-10. Well detailed for the grade. One of the 'keys' to the series. . . . . #128326 \$1625.00
- 1906. PCGS. MS-65. Satiny mint luster and a sharp strike with nearly mark-free surfaces. . . . . #221096 \$875.00
- 1907. PCGS. PR-66. CAC. Iridescent hues of lavender and gold enhance the beauty of this gorgeous proof. Precisely struck & devoid of marks w/great eye appeal. . #228816 \$2095.00
- 1907-O. NGC. MS-65. CAC. Creamy mint luster with a golden hue and russet-gold at the rim. The strike is solid and the eye appeal is outstanding. A tough date to find in the high-end mint state grades.. #206607 \$1995.00
- 1908. PCGS. MS-63. Rich champagne-silver luster and a bold strike. . . . #215981 \$375.00
- 1908. PCGS. PR-63. CAC. Very flashy with nicely frosted design features and very light peripheral gold toning. Looks a lot nicer than the typical Proof-63! . . #229086 \$779.00



- 1908-S. PCGS. MS-65. A better date with a modest 784,000 minted and particularly tough to find in mint state. This is one of the better survivors with shimmering white luster and a great strike with semi proof-like surfaces. . . . . #229035 \$3450.00
- 1911. NGC. MS-66. Blast white & well struck with delightful surfaces that are devoid of significant marks. . . . . #228780 \$1375.00
- 1911-S. PCGS. MS-66. Sharply struck w/satiny champagne-white luster. A better date with just under a million minted. #229036 \$1995.00
- 1912. NGC. MS-63. Flashy lustrous surfaces and a sharp strike. . . . . #229015 \$339.00
- 1912. PCGS. MS-63. Vibrant white luster and a sharp strike.. #223861 \$359.00
- 1912. PCGS. MS-64. Satiny brilliant luster with no significant marks. Outstanding for the grade. . . . . #125770 \$459.00
- 1912. PCGS. PR-63. A nice brilliant proof with no significant marks or hairlines. High-end for the grade. . . . . #216212 \$749.00
- 1913. PCGS. MS-62. A tough date with a modest mintage of 484,000. This example has nice satiny white mint luster with a touch of toning. . . . . #223643 \$1025.00
- 1913-D. PCGS. MS-64. Satiny luster and well struck with attractive clean surfaces. A better date in high grade. . . . . #228819 \$845.00

- 1913-D. PCGS. MS-65. Well struck with nearly mark-free surfaces. The luster is bright and satiny with a touch of champagne and a faint ice-blue hue.. . . . #229037 \$995.00
- 1914-D. PCGS. MS-65. Sharply struck with attractive satiny luster.. . . . #229038 \$750.00
- 1914-S. PCGS. XF-40. CAC. A Gem for the grade with exceptionally nice steel-gray surfaces. . . . . #225837 \$995.00
- 1915-S. NGC. MS-64. Well struck with crisp mint luster and just a wisp of toning. Scarce in high grade with a modest 704,000 minted. . . . . #228838 \$749.00
- 1915-S. PCGS. AU-55. A better date with a modest mintage of 704,000.. #228786 \$279.00

**Standing Liberty Quarters**



- 1916. PCGS. MS-66+. CAC. A stunning example of this first-year Standing Liberty Quarter which is recognized as the 'key' to the series. This beauty exhibits fresh vibrant mint luster with gorgeous golden obverse toning that has a faint greenish hue. The reverse shows the same wonderful luster intensity with slightly more delicate toning. The head detail is very nearly full. This is the single finest non-Full Head designated coin that PCGS has graded. A spectacular coin & a great chance for the advanced collector of this beautiful series. . . . . #227301 \$39995.00
- 1917-ST-1. NGC. MS-64. FH. Crisp white luster and a very sharp strike. . . . #204655 \$1169.00



- 1918/17-S. PCGS. MS-60. The only major variety in the series and, by at least two-fold, the rarest coin in mint state. This is a pleasing well struck example w/nice lustrous surfaces that have a light champagne-gold hue. Outstanding for the grade. #228999 \$19850.00
- 1920. PCGS. MS-66+. CAC. Blazing champagne-white luster with a touch of toning towards the rim. The strike is very sharp with nearly full head detail. . . . #223784 \$1149.00
- 1920-S. PCGS. MS-64+. CAC. A very pleasing example of this better date w/satiny original luster and a touch of mostly peripheral gold toning. . . . . #227453 \$1295.00
- 1923. PCGS. MS-65. Beautiful lustrous surfaces with a light champagne glow. #130581 \$449.00
- 1923-S. PCGS. AU-58. CAC. Very flashy white luster w/a touch of toning at the rim. Looks

MS-63 or better, but close examination reveals the barest touch of friction. Housed in an early green label holder. . . . #212186 \$2895.00



- 1923-S. NGC. MS-66. CAC. An exceptional example of this scarce date with blazing mostly white luster that has a touch of delicate toning. The surfaces are devoid of any significant marks and the strike is sharp with 95% head detail. . . . #229070 \$4595.00
- 1923-S. PCGS. VF-25. A well detailed example of one of the 'keys' to the series. #229116 \$839.00
- 1924. PCGS. MS-65. Vibrant luster & a strong strike w/minimal abrasions. #136561 \$525.00
- 1926. PCGS. MS-62. FH. Crisp white luster and a sharp strike. . . . #229005 \$325.00
- 1926. PCGS. MS-65. CAC. Rich satiny luster with peripheral russet toning. Very close to full head detail and a coin with wonderful originality. . . . #140575 \$455.00
- 1926-D. PCGS. MS-64. Flashy luster with a light golden hue. . . . #118004 \$295.00
- 1926-D. PCGS. MS-65. CAC. Frosty silver-white luster. Beautiful and original! #228928 \$479.00
- 1926-D. PCGS. MS-65. Flashy luster with nice clean surfaces. . . . #200605 \$425.00
- 1926-D. PCGS. MS-65+. Blazing luster with a white core and beautiful light peripheral color. . . . #222926 \$525.00
- 1927. PCGS. MS-65. CAC. Beautiful original frosty surfaces with rich cream-white luster and just a sprinkle of toning. Well struck with 3/4 head detail. . . . #228930 \$525.00
- 1929. PCGS. MS-64. FH. CAC. Flashy white luster and a sharp strike. . . . #228565 \$495.00
- 1929. PCGS. MS-65. Blast white and nearly a full head. . . . #219344 \$449.00
- 1929. PCGS. MS-65. FH. Beautiful satiny white luster w/nice clean surfaces. #137365 \$699.00
- 1929. PCGS. MS-66. FH. Vibrant white luster and a great strike. . . . #223193 \$1049.00
- 1929-S. PCGS. MS-66+. CAC. Very intense blast white luster and a sharp strike with nearly full head detail. . . . #217395 \$995.00
- 1930. PCGS. MS-62. FH. Crisp white luster and a sharp strike. . . . #229004 \$299.00
- 1930. PCGS. MS-64. FH. Satiny white luster and a sharp strike. . . . #133656 \$369.00
- 1930. PCGS. MS-65. FH. Vibrant mint luster and a sharp strike with a beautiful golden-green tint. . . . #123245 \$599.00
- 1930. PCGS. MS-66. Rich satiny white luster and a great strike with very nearly full head detail. Pristine surfaces. . . . #229045 \$659.00

**Washington Quarters**

1934. PCGS. MS-67. Medium Motto. Flashy white luster with an iridescent ice-blue hue at the rim. Super! . . . . #228874 \$649.00

- 1935. PCGS. MS-67. Blast white. #211354 \$425.00
- 1935-D. PCGS. MS-66. Blazing champagne-white luster. . . . #133551 \$519.00
- 1936. PCGS. PR-63. Just 3,837 quarters were minted as proof coinage resumed at the mint in 1936. . . . #213154 \$695.00
- 1936-D. PCGS. MS-65. Crisp white luster and a sharp strike. . . . #200710 \$995.00
- 1936-S. NGC. MS-65. Satiny white luster and a sharp strike. . . . #136867 \$245.00
- 1937-S. PCGS. MS-64. Blast white. . . . #126976 \$259.00
- 1938. NGC. PR-67. Blast white and virtually flawless. . . . #228937 \$895.00
- 1938. PCGS. MS-66. CAC. Thick creamy luster and a sharp strike. . . . #227789 \$249.00
- 1938-S. PCGS. MS-66. . . . #226059 \$249.00
- 1939-S. NGC. MS-65. Flashy silver-white luster. . . . #134790 \$269.00
- 1940-D. PCGS. MS-65. Blast white. . . . #140235 \$289.00
- 1940-D. PCGS. MS-67. A superb Gem with flashy mostly white luster & light peripheral toning. . . . #209699 \$795.00
- 1940-S. PCGS. MS-67. CAC. Super quality with blazing luster and a thin arc of rainbow toning at the obverse rim. Virtually perfect. . . . #205795 \$595.00
- 1941-D. PCGS. MS-66. . . . #134015 \$95.00
- 1941-D. PCGS. MS-67. CAC. Wonderful intense blast white luster on this virtually perfect quarter! . . . . #209934 \$795.00
- 1942-S. PCGS. MS-65. . . . #200342 \$129.00
- 1951-D. NGC. MS-67. Blast white. . . . #228833 \$269.00

**Bust Half Dollars**

- 1795. PCGS. F-15. CAC. 2 Leaves. O-122. R-5. Well detailed with beautiful natural color and surfaces. . . . #207325 \$3595.00
- 1795. PCGS. VG-10. 2 Leaves. Well detailed with pleasing surfaces. . . . #208449 \$1795.00



- 1796. PCGS. F-12. 15 Stars. An Early American classic. PCGS CoinFacts lists a mintage of just 934 coins with less than 100 surviving today. This example is very clean for the grade with pleasing light gray surfaces and solid detail. The Draped Bust Half with Small Eagle Reverse is a two year type with 15 Star and 16 Star varieties struck for 1796 & just a 15 Star obverse for 1797. All are rare w/the 1796 coins being just slightly rarer. A great coin to add to an advanced collection! . . . . #227390 \$49995.00
- 1806. PCGS. AU-53. Pointed 6, No Stem. Strong detail with lustrous light silver-gray (almost white) surfaces. . . . #229147 \$3850.00

1807. PCGS. AU-53. Large Stars. 50/20 Rev. Original problem-free surfaces with vibrant silver-white luster and just a touch of wear. . . . #224130 \$2595.00



- 1807. PCGS. AU-55. Large Stars. 50/20 Rev. O-112. Very attractive w/nearly full detail & rich brilliant silver-gray luster. #221237 \$3950.00
- 1807. PCGS. VF-30. Draped Bust. Well detailed and problem-free with light steel-gray surfaces. . . . #137466 \$895.00
- 1810. PCGS. AU-55. Strong and evenly struck with brilliant white mint luster. Nearly mint state with just slight wear at the high points. . . . #220585 \$1689.00



- 1811. PCGS. AU-58. Large 8. Very well struck with crisp mint luster and a light golden-tan hue. Very nearly mint state with just the barest touch of 'rub'. . . . #214862 \$2695.00
- 1814. NGC. AU-58. CAC. Razor sharp detail and lustrous surfaces w/original olive-green and gold toning. A beautiful Bust Half that's extremely close to being mint state. . . . #216158 \$2250.00
- 1814. PCGS. XF-40. Strong detail with light silver-gray surfaces. . . . #208042 \$649.00
- 1814/3. PCGS. XF-40. Strong detail w/pleasing light steel-gray surfaces. . . . #229144 \$1039.00
- 1828. PCGS. AU-55. Square Base 2, Small 8's, Large Letters. Sharp strike with lustrous steel-gray surfaces. . . . #206910 \$675.00
- 1829. PCGS. AU-58. Rich lustrous silver-gray surfaces and a very sharp strike. Super close to being mint state. . . . #227039 \$845.00
- 1832. PCGS. AU-58. CAC. O-113a. Small Letters. Rich frosty white luster with a barely discernible trace of 'friction'. This coin looks like an MS-64 at first glance. #223855 \$1195.00
- 1835. PCGS. AU-50. Well struck with lustrous silver-white surfaces that show a subtle hint of gold. . . . #228861 \$359.00
- 1836. NGC. XF-45. CAC. Reeded Edge. Outstanding for the grade with strong detail and pleasing steel-gray surfaces. #229042 \$4495.00

**Seated Liberty Half Dollars**

1842-O. ANACS. XF-40. Medium Date. Reverse of 1842. . . . #228659 \$249.00

\*Item Code # is located next to price.



- 1844-O. PCGS. MS-62. Well struck with flashy lustrous champagne-gold surfaces. A tough date to find in mint state. . . #225751 \$2295.00
- 1855. ANACS. AU-50. Strong detail w/lustrous surfaces that have light original toning. . . . . #228667 \$379.00
- 1855-O. NGC. MS-61. A very sharp strike w/nice lustrous mostly white surfaces. #228873 \$695.00
- 1859-O. NGC. MS-61. Flashy copper-red luster with peripheral hues of lime-green and gold. The strike is sharp and the eye appeal is outstanding. . . . . #228821 \$835.00
- 1869. NGC. AU-58. Sharp detail with lustrous silver-gray surfaces.. . . . #200145 \$469.00
- 1872-CC. NGC. XF-45. Strong detail w/pleasing light steel-gray surfaces. . . . #229148 \$2695.00
- 1873-CC. PCGS. VF-20. Arrows. A problem-free example of this better date. #225107 \$1049.00
- 1873-CC. PCGS. XF-40. A nice problem-free example of this better date. The detail is strong for the grade & light silver-gray surfaces retain a trace of luster. . . . #220208 \$2095.00
- 1876-CC. PCGS. MS-62. CAC. Satiny luster and a sharp strike with nice clean golden greenish-gray surfaces. The only MS-62 to also receive CAC approval! #228856 \$1625.00



- 1878. PCGS. PR-65. CAM. Crisp brilliant luster with a halo of gold at the rim and rich frost on the design features. . . . #227199 \$3450.00
- 1880. PCGS. AU-50. Only 8,400 minted and truly scarce as a high grade business strike. . . . . #229016 \$995.00
- 1886. NGC. PR-64. CAM. Blast white with deep mirrored fields and snow-white frost on the design elements. . . . #228885 \$1995.00
- 1891. NGC. PR-65. A lovely Gem with an almond-white core and a touch of gold and turquoise at the rim. The design features are nicely frosted and the surfaces are free of noteworthy marks. . . . . #228918 \$2535.00

**Barber Half Dollars**

- 1892. PCGS. PR-64. Flashy proof surfaces with light powder-blue and gold toning on the obverse and light cream-gold on the reverse. . . . . #208889 \$1595.00
- 1892. PCGS. PR-64. CAM. A beautiful flashy proof w/nice cameo contrast & very attractive light golden toning. . . . #222655 \$2195.00
- 1895. PCGS. MS-63. CAM. CAC. A nice fully brilliant proof with deep mirrored fields that contrast nicely with the frosted design features. Seems conservatively graded! . . . . . #228982 \$1495.00
- 1896-O. PCGS. F-15. CAC. Well detailed with very attractive steel-gray surfaces. Super for the grade. . . . . #207902 \$350.00

- 1896-O. PCGS. VF-30. CAC. Nearly XF detail.. P.Q. for the grade. . . . . #201850 \$849.00
- 1900-S. PCGS. AU-58. Strong detail with crisp white luster. . . . . #207835 \$845.00
- 1902. PCGS. PR-64. Beautiful rich lavender toning blankets this flashy near-Gem proof. . . . . #218947 \$1495.00



- 1904. PCGS. PR-66. Spectacular rainbow toning w/a bright core and bands of reddish-gold to turquoise developing to the rim. Extremely high technical quality & a visual feast! . . . . . #228822 \$3750.00
- 1905. PCGS. MS-62. A 'sleeper' in the Barber Half series w/just 662,000 minted (5th lowest) & relatively few high grade survivors. This is an attractive, boldly struck example w/crisp champagne tinted luster.. . . #229127 \$1095.00
- 1905. PCGS. PR-62. Flashy white luster off deep mirrored fields with modest frost on the design. Strong eye appeal and exceptionally nice for the grade.. . . . #208248 \$875.00
- 1906. PCGS. VF-25. . . . . #229082 \$149.00
- 1907. PCGS. VF-20. . . . . #229067 \$135.00
- 1908-S. PCGS. MS-63. Flashy mint luster and a sharp strike with an attractive champagne-gold hue. Particularly nice for the grade and a very tough date to find in any grade of mint state. . . . . #206621 \$2350.00
- 1910. PCGS. MS-62. A better date with a modest mintage of 418,000. This is a boldly struck example w/semi proof-like surfaces. The luster is flashy with a touch of champagne-gold toning.. . . #228970 \$895.00
- 1912-D. PCGS. MS-65. CAC. Blazing white luster with a vibrant 'cartwheel' and a sharp strike. . . . . #221557 \$1895.00
- 1915-D. PCGS. MS-63. Well struck w/shimmering mint luster over nearly mark-free surfaces. Very nice for the grade! . . . . #131949 \$815.00
- 1915-D. PCGS. MS-65. Blast white & a sharp strike. Outstanding for the grade. . . . . #131399 \$1895.00

**Walking Liberty Half Dollars**

- 1916-D. PCGS. MS-65. Flashy white luster with a touch of color at the rim. The strike is very sharp and the surfaces are beautiful with no significant marks. . . . . #226349 \$2595.00
- 1916-S. PCGS. MS-65. Beautiful satiny white luster and a sharp strike with nearly flawless surfaces. . . . . #218063 \$6750.00
- 1917-D Obv. PCGS. MS-63. Well struck and attractive w/crisp white luster. #133317 \$1295.00
- 1917-D Obv. PCGS. MS-63+. CAC. Rich white luster over nice clean surfaces. The strike is sharp & the eye appeal is outstanding. The only 63+ graded at PCGS. . #229149 \$1695.00

- 1917-D Obv.. PCGS. MS-64. Vibrant mint luster with a brilliant core & attractive light toning that strengthens at the rim. The strike is extremely sharp and the surfaces are devoid of significant marks. . . . . #223457 \$1995.00



- 1919-S. PCGS. MS-64. Beautifully preserved w/choice original surfaces. The luster is satiny & brilliant w/golden-russet peripheral toning. The second rarest 'Walker' in mint state behind only the 1921-S.. . #228971 \$11875.00
- 1920. PCGS. MS-64. A flashy white core with light peripheral toning. Excellent eye appeal! . . . . . #139236 \$1049.00



- 1929-D. PCGS. MS-66. Vibrant mint luster and a sharp strike with nearly mark-free surfaces. A single coin has graded numerically finer at PCGS with 4 others grading 66+. . . . . #203139 \$4250.00
- 1934. PCGS. MS-65. Crisp white luster with a sprinkle of champagne. Very well struck. . . . . #136745 \$349.00
- 1934. PCGS. MS-66. Crisp white luster and a sharp strike. . . . . #135048 \$449.00
- 1935. NGC. MS-65. Satiny luster. #137775 \$209.00
- 1935. PCGS. MS-66. Satiny white luster and a solid strike. . . . . #208454 \$450.00
- 1935. PCGS. MS-66. CAC. Satiny white luster and a sharp strike.. . . . #219416 \$499.00
- 1935. PCGS. MS-67. Super rich lustrous cream-white surfaces with a touch of peripheral toning and a sharp strike. Only a single coin has graded numerically finer at PCGS. . . . . #211642 \$2995.00
- 1936. PCGS. MS-66. . . . . #127861 \$259.00
- 1936-D. PCGS. MS-65. Thick satiny white luster and a sharp strike.. . . #136778 \$399.00
- 1937-D. PCGS. MS-65. Satiny white luster and a very sharp strike.. . . . #229001 \$525.00
- 1937-S. PCGS. MS-66. Blast white and a sharp strike w/excellent eye appeal. #139399 \$895.00
- 1937-S. PCGS. MS-66. CAC. Intense blast white luster over nearly flawless surfaces. . . . . #227493 \$995.00
- 1938. NGC. MS-65. CAC. . . . #126792 \$259.00
- 1938. PCGS. MS-67. Blazing luster with a rich silver patina and a faint ice-blue hue. 5 coins have graded 67+ at PCGS with just 1 coin grading numerically finer.. . #218919 \$1195.00

\*Item Code # is located next to price.

- 1938. PCGS. PR-64. A sharply struck, flashy proof. . . . . #225847 \$495.00
- 1938. PCGS. PR-66. CAC. Flashy brilliant surfaces & a needle-sharp strike. #128025 \$795.00
- 1939. PCGS. MS-66+. CAC. Satiny white luster and a sharp strike. . . . . #229180 \$325.00
- 1939. PCGS. PR-65. Super flashy surfaces that are nearly flawless. . . . . #216029 \$565.00



- 1939. PCGS. PR-68. Virtually perfect with a razor sharp strike, blazing brilliant luster, and spectacular pristine mirrored fields. None have graded numerically higher at PCGS. . . . . #211775 \$4495.00
- 1939-D. PCGS. MS-66. CAC. Well struck with rich frosty white luster. . . . . #228808 \$309.00
- 1939-D. PCGS. MS-66. Blast white and a sharp strike. . . . . #130028 \$275.00
- 1939-D. PCGS. MS-67. Super rich cream-white luster w/just a tiny trace of toning. The strike is sharp with full skirt and head detail. . . . . #218920 \$1495.00
- 1939-S. PCGS. MS-66. Booming satiny luster and a sharp strike. . . . . #138961 \$389.00
- 1940. PCGS. MS-67. CAC. Blazing luster and a sharp strike w/a delicate champagne hue. . . . . #137452 \$649.00
- 1941. NGC. MS-67. CAC. Super flashy and a great strike with beautiful champagne-gold toning framed by russet at the rim. . . . . #137453 \$549.00
- 1941. PCGS. MS-65. . . . . #201945 \$84.95
- 1941. PCGS. MS-66. . . . . #124961 \$159.00
- 1941. PCGS. PR-65. CAC. Blast white and outstanding for the grade. . . . . #229181 \$495.00
- 1941-D. NGC. MS-65. . . . . #203831 \$99.95
- 1941-D. NGC. MS-67. Vibrant silver-white luster and a great strike with just a trace of toning. . . . . #137532 \$650.00
- 1941-D. PCGS. MS-64. . . . . #125776 \$69.95
- 1941-D. PCGS. MS-65. . . . . #126931 \$99.95
- 1941-S. PCGS. MS-64. . . . . #200629 \$169.00
- 1941-S. PCGS. MS-66. Well struck with satiny mint luster. . . . . #203014 \$975.00
- 1942. PCGS. MS-65. . . . . #205185 \$84.95
- 1942-D. PCGS. MS-64. . . . . #210271 \$89.00
- 1942-S. PCGS. MS-64. . . . . #126999 \$94.95
- 1942-S. PCGS. MS-65. . . . . #138555 \$289.00
- 1942-S. PCGS. MS-65. CAC. Crisp luster & an excellent strike for the date. . #226706 \$339.00
- 1942-S. PCGS. MS-66. CAC. Blast white & an excellent strike for the date. . #207944 \$689.00
- 1942-S. PCGS. MS-66. Blast white with nearly mark-free surfaces and an outstanding strike for this better date. . . . . #203027 \$549.00
- 1943. PCGS. MS-65. . . . . #207748 \$84.95
- 1943. PCGS. MS-66+. . . . . #226660 \$199.00
- 1943-D. PCGS. MS-64. . . . . #120768 \$84.95

- 1943-D. PCGS. MS-65. . . . . #123415 \$149.00
- 1943-S. PCGS. MS-64. . . . . #205191 \$74.95
- 1943-S. PCGS. MS-65. . . . . #134325 \$199.00
- 1943-S. PCGS. MS-65. CAC. Blast white and a sharp strike. Super for the grade. . . . . #227169 \$295.00
- 1943-S. PCGS. MS-66. Flashy white luster and a strong strike. . . . . #224838 \$409.00
- 1944. PCGS. MS-65. . . . . #123397 \$84.95
- 1944. PCGS. MS-66. . . . . #127988 \$159.00
- 1944. PCGS. MS-67. Silky smooth surfaces with a great strike and intense white luster. By far the scarcest "common date" "Walker" in MS-67 with just 1 grading numerically finer at PCGS. . . . . #218923 \$895.00
- 1944-D. PCGS. MS-64. . . . . #128204 \$74.95
- 1944-D. PCGS. MS-65. . . . . #126492 \$99.95
- 1944-D. PCGS. MS-66. . . . . #200616 \$159.00
- 1944-D. PCGS. MS-66+. Blast white and a sharp strike. . . . . #138526 \$259.00
- 1944-S. PCGS. MS-64. . . . . #122236 \$79.95
- 1944-S. PCGS. MS-65. . . . . #123398 \$249.00
- 1945. NGC. MS-66. . . . . #125780 \$159.00
- 1945. PCGS. MS-65. . . . . #201946 \$84.95
- 1945-D. PCGS. MS-65. . . . . #118006 \$89.95
- 1945-S. PCGS. MS-65. . . . . #200625 \$99.95
- 1945-S. PCGS. MS-66. Creamy white luster & a super strike for this date. . #211099 \$229.00
- 1946. NGC. MS-65. . . . . #203570 \$99.00
- 1946. PCGS. MS-66. . . . . #207417 \$159.00
- 1946. PCGS. MS-67. Rich creamy luster and a great strike with just a trace of toning. . . . . #215650 \$1250.00
- 1946-D. NGC. MS-65. . . . . #203846 \$89.95
- 1946-D. NGC. MS-66. . . . . #133375 \$145.00
- 1946-D. NGC. MS-67. Crisp white luster & a sharp strike with pleasing smooth surfaces. The lowest mintage date in the popular 'Short Set'. . . . . #133568 \$749.00
- 1946-D. PCGS. MS-65. . . . . #123647 \$89.95
- 1946-D. PCGS. MS-66. . . . . #124708 \$149.00
- 1946-D. PCGS. MS-66+. . . . . #210788 \$259.00
- 1946-S. PCGS. MS-65. . . . . #125848 \$94.95
- 1946-S. PCGS. MS-66. . . . . #124704 \$169.00



- 1946-S. PCGS. MS-67. Blazing luster and a sharp strike with silky smooth surfaces. . . . . #224298 \$1495.00
- 1947. PCGS. MS-66+. CAC. Flashy white luster and a sharp strike with nearly mark-free surfaces. . . . . #227237 \$495.00
- 1947-D. NGC. MS-67. CAC. Rich creamy mint luster with an iridescent champagne-gold hue. The strike is strong and the surfaces are nearly flawless. . . . . #229151 \$2750.00
- 1947-D. PCGS. MS-65. . . . . #207751 \$99.95
- 1947-D. PCGS. MS-66+. CAC. Blazing luster and a sharp strike. . . . . #228217 \$469.00



- 1947. PCGS. MS-67. Blast white luster and a sharp strike with nearly pristine surfaces. . . . . #214864 \$1595.00

**Franklin Half Dollars**

- 1948. PCGS. MS-66+. FBL. CAC. Rich satiny luster over nearly pristine surfaces. The strike is very sharp including clear full bell lines. . . . . #225707 \$895.00
- 1948-D. PCGS. MS-65. FBL. . . #200374 \$129.00
- 1948-D. PCGS. MS-65+. FBL. CAC. . . . . #229071 \$165.00
- 1948-D. PCGS. MS-66. FBL. CAC. Vibrant luster and a great strike with nearly flawless surfaces. . . . . #229150 \$525.00
- 1949-S. PCGS. MS-66. FBL. A high quality example of this 'key' date with 'mint set' toning. . . . . #138548 \$499.00
- 1949-S. PCGS. MS-66+. CAC. Attractive light 'Mint Set' toning. . . . . #223223 \$315.00
- 1950. PCGS. PR-66. Crisp white luster. . . . . #203180 \$825.00
- 1951. PCGS. PR-65. . . . . #131888 \$349.00
- 1951-D. PCGS. MS-65. FBL. . . #207933 \$179.00
- 1952-S. PCGS. MS-65. . . . . #130662 \$99.00
- 1952-S. PCGS. MS-66+. CAC. Very high quality w/delicate 'mint set' toning. . #223496 \$215.00



- 1952-S. PCGS. MS-67. CAC. Puffy white luster on the obverse with a touch of russet at the rim. The reverse displays rich russet & forest green toning suggesting that this was at the end of an original roll or came out of a mint set. Super quality! . . . . . #228951 \$995.00
- 1953. PCGS. PR-66. CAM. Blast white. . . . . #224266 \$395.00
- 1953. PCGS. PR-67+. CAC. Blast white and virtually perfect! . . . . . #229159 \$695.00
- 1953-S. PCGS. MS-66. . . . . #220848 \$209.00
- 1954. PCGS. PR-66. . . . . #222665 \$85.00
- 1954-S. PCGS. MS-66+. CAC. Booming mint luster with nice original peripheral toning. . . . . #228716 \$350.00
- 1955. PCGS. PR-68. . . . . #212459 \$199.00
- 1955. PCGS. PR-68. CAM. CAC. Blast white. . . . . #227223 \$475.00
- 1955. PCGS. PR-68. CAM. Blast white with frosted devices and nearly perfect surfaces. . . . . #227216 \$450.00

\*Item Code # is located next to price.



- 1956. PCGS. PR-69. CAM. Type 2. Blast white and nearly perfect. . . . . #225059 \$585.00
- 1959-D. PCGS. MS-65. FBL. . . . #223497 \$99.00
- 1960-D. PCGS. MS-65. FBL. Satiny mint luster and a sharp strike. . . . . #228591 \$299.00
- 1962. PCGS. PR-68. DCAM. CAC. Blast white and essentially perfect with incredible deep cameo contrast. . . . . #220175 \$599.00
- 1963. NGC. PR-69. CAM. Blast white and essentially perfect! . . . . . #229169 \$799.00
- 1963-D. PCGS. MS-66. Blast white with nearly full bell lines. . . . . #229031 \$469.00

**Kennedy Half Dollar**

- 1964. PCGS. PR-66. . . . . #208338 \$99.00

**Bust Dollars**

- 1796. PCGS. VF-25. Large Date, Small Letters. Twenty-seven graded VF-25 at PCGS with this being the only one to receive CAC approval. A beautiful 'Small Eagle' dollar with solid detail and pleasing original light steel-gray surfaces. . . . . #229018 \$5650.00



- 1797. PCGS. AU-50. 9x7 Stars, Large Letters. Very sharp detail with a faint champagne-tan hue off light silver-gray surfaces. A few scattered tics and uneven charcoal toning on the reverse prevent an even higher grade. . . . . #228991 \$12950.00
- 1797. PCGS. XF-45. 9x7 Stars, Large Letters. Nice original silver-gray patina w/gunmetal-blue overtones. The detail is very sharp with just a touch of wear on the highest points with even the exposed breast feathers of the eagle on the reverse being mostly intact. Outstanding for the grade. #216373 \$10950.00
- 1798. PCGS. VF-30. Large Eagle. Well detailed with nice original steel-gray surfaces that have a golden-tan hue. . . . #229039 \$2525.00
- 1799. PCGS. VF-20. CAC. Strong detail with outstanding steel-gray surfaces. A Gem for the grade. . . . . #229008 \$2795.00
- 1800. PCGS. F-15. CAC. Well detailed with beautiful smooth battleship gray surfaces. A Gem for the grade! . . . . #217093 \$2295.00
- 1800. PCGS. XF-40. Sharp detail and pleasing light silver-gray surfaces with a trace of luster remaining. . . . . #229073 \$3995.00
- 1802/1. PCGS. F-15. A pleasing example of this popular and very clear over-date. . . . . #227411 \$2295.00
- 1803. PCGS. VG-10. Large 3. Evenly struck with strong detail and pleasing problem-free surfaces. . . . . #228983 \$1550.00

**Seated Liberty Dollars**

- 1850. NGC. VF-35. Well detailed with light silver-gray surfaces. Only 7,500 minted and scarce in any grade. . . . . #229119 \$1995.00
- 1850-O. PCGS. XF-45. Scarce in any grade with a mintage of just 40,000. This is a beautiful example with sharp detail and pleasing surfaces. . . . . #228855 \$2795.00



- 1860-O. PCGS. MS-62+. CAC. Blows away the typical MS-62 with bright super white luster and a great strike. There are scattered marks but they are minor and don't detract from this coin's exceptional eye appeal. . . . . #229047 \$3250.00

**Trade Dollars**

- 1874-CC. PCGS. MS-62. Nice original champagne-white surfaces and a very sharp strike with very few marks and none that detract from strong eye appeal. . . . #229172 \$3895.00
- 1875-CC. NGC. MS-61. Well struck with crisp white luster. The surfaces show minimal marks and none which are significant or distract from the excellent eye appeal. . . . . #229118 \$2495.00
- 1875-S. NGC. MS-63. Well struck with crisp mint luster and minimal marks. Nice for the grade. . . . . #128190 \$1595.00
- 1875-S. PCGS. MS-64. Crisp brilliant mint luster and a sharp strike with exceptionally clean surfaces. . . . . #131866 \$2750.00
- 1876. NGC. PF-62. CAM. Flashy mirrored surfaces w/a warm champagne glow & heavy frost on the design features. #227188 \$2595.00



- 1878-CC. PCGS. MS-61. The 'key' business strike in the series w/a mintage of just 97,000. It is also by far the rarest date in mint state. This example is very sharply struck w/nearly full white luster and a nice layer of frost on the design features. The surfaces are very clean for the grade w/only minor abrasions which don't detract from the excellent eye appeal of the coin. . . . . #227217 \$19995.00

- 1878-S. PCGS. MS-61. Sharply struck with flashy white luster and excellent eye appeal. Outstanding for the grade! . #218637 \$1195.00

**Morgan Dollars**

- 1878-CC. PCGS. MS-65. Well struck w/frosty white luster & minimal marks. Ms. Liberty's cheek is particularly clean. #123244 \$1495.00
- 1878-S. NGC. MS-64. . . . . #200117 \$119.00
- 1878-S. PCGS. MS-65. Vivid frosty white luster and a sharp strike. . . . . #201344 \$269.00
- 1878-7/8TF. PCGS. MS-65. Strong under-features. Vibrant satiny white luster & minimal marks with a sharp strike. . . . . #130277 \$1495.00
- 1878-7TF. PCGS. MS-63. Reverse of 1878. . . . . #124459 \$129.00
- 1878-8TF. NGC. MS-64. Flashy white luster and a sharp strike. . . . . #200514 \$469.00
- 1879. PCGS. MS-65. PL. Booming blast luster and a needle-sharp strike. The surfaces are nearly mark-free with nice reflective fields and strong frost on the design features. Truly scarce in high grade and proof-like. Just 3 have graded finer at PCGS - 1 @ 65+ and 2 @ 66. . . . . #204671 \$2595.00
- 1879-CC. NGC. XF-45. Clear CC. Well detailed w/light silver-gray surfaces. #220817 \$1375.00
- 1879-CC. PCGS. MS-62. CAC. Clear CC. Blast white and a solid strike with nicely frosted devices. . . . . #210209 \$6295.00



- 1879-CC. PCGS. MS-63+. Clear CC. Sharply struck with beautiful frosty blast white luster. . . . . #227189 \$7995.00
- 1879-O. PCGS. MS-63. Crisp white luster and a sharp strike. . . . . #205450 \$275.00
- 1879-O. PCGS. MS-65. CAC. A needle-sharp strike with vibrant mint luster & outstanding eye appeal. A scarce date in MS-65 or better and most MS-65 coins we've seen can't hold a candle to this superior CAC approved example. Only 26 have graded numerically finer at PCGS. . . . . #129442 \$4775.00
- 1879-S. PCGS. MS-65. . . . . #123400 \$139.00
- 1879-S. PCGS. MS-66. . . . . #224913 \$249.00
- 1879-S. PCGS. MS-66+. CAC. Blast white with super flashy clean surfaces. . #227168 \$425.00
- 1879-S. PCGS. MS-66+. Blast white and a great strike with semi proof-like fields and frosted devices. . . . . #210621 \$349.00
- 1879-S. PCGS. MS-67. Blast white with frosted design features and nearly flawless surfaces. . . . . #209991 \$725.00
- 1880. PCGS. MS-64. . . . . #125258 \$129.00
- 1880. PCGS. MS-65+. CAC. Blast white with frosty white luster and semi proof-like fields.



- Exceptionally clean and nice for the grade!  
..... #223394 \$995.00
- 1880-CC. PCGS. MS-65. CAC. Frosty white luster and a sharp strike with clean surfaces.  
..... #223844 \$1250.00
- 1880-CC. PCGS. MS-65. Frosty white luster and a sharp strike with nice clean surfaces.  
..... #204867 \$995.00
- 1880-S. NGC. MS-66. Blast white.  
..... #202755 \$219.00
- 1880-S. PCGS. MS-65. .... #222232 \$139.00
- 1880-S. PCGS. MS-65. PL. Blast white with beautifully frosted design elements.  
..... #131017 \$249.00
- 1880-S. PCGS. MS-66. .... #200266 \$229.00
- 1880/79-S. PCGS. MS-65. .... #131830 \$195.00
- 1881. PCGS. MS-64. PL. Outstanding for the grade with frosty white devices that contrasts beautifully with the proof-like fields. Very well struck and free of significant marks.  
..... #202232 \$489.00
- 1881. PCGS. MS-65. Satiny white luster and a sharp strike. .... #124171 \$535.00



- 1881. PCGS. MS-65. PL. Blast white w/highly reflective fields and very heavy frost on the design features. Only a single coin has graded finer at PCGS! .... #227231 \$2989.00
- 1881. PCGS. MS-65+. Satiny white luster with minimal marks and a clean cheek.  
..... #135626 \$695.00
- 1881-CC. PCGS. MS-64. DMPL. CAC. Blast white and heavily frosted producing a strong 'cameo'. The strike is very sharp and the surfaces have far fewer marks than typically seen for the grade. .... #202917 \$1575.00
- 1881-CC. PCGS. MS-66. Satiny white luster and a sharp strike with nice clean surfaces.  
..... #137527 \$1195.00
- 1881-CC. PCGS. MS-66+. CAC. Rich satiny white luster and a sharp strike with nearly mark-free surfaces. .... #206829 \$1895.00
- 1881-O. PCGS. MS-65. Frosty white luster and a sharp strike. Outstanding quality!  
..... #130368 \$995.00
- 1881-S. NGC. MS-67. CAC. Blast white.  
..... #203508 \$749.00
- 1881-S. PCGS. MS-65. PL. Blast white luster that is super intense. The strike is sharp and the design features are heavily frosted.  
..... #118091 \$239.00
- 1881-S. PCGS. MS-66. .... #203748 \$229.00
- 1881-S. PCGS. MS-66. DMPL. Visually stunning with intense blast white luster and virtually flawless mirrored surfaces. . #228972 \$2145.00
- 1881-S. PCGS. MS-66+. CAC. Frosty white luster and a sharp strike. .... #208962 \$345.00

- 1881-S. PCGS. MS-67. Incredibly intense blast white luster and a needle-sharp strike. Fantastic quality! . . . . . #133570 \$679.00
- 1881-S. PCGS. MS-67+. CAC. A spectacular satin-white Superb Gem. . . #223575 \$1295.00
- 1882. PCGS. MS-64. .... #123062 \$119.00
- 1882. PCGS. MS-64+. .... #227398 \$155.00
- 1882. PCGS. MS-65. Flashy white luster with a trace of gold toning at the rim. #205718 \$325.00
- 1882. PCGS. MS-66. Satiny white luster & great strike w/very clean surfaces. #207785 \$1049.00
- 1882-CC. PCGS. MS-65. Blast white and semi proof-like.. . . . . #200136 \$449.00
- 1882-CC. PCGS. MS-65. PL. Sharply struck with frosty white luster and flashy mirrored fields. .... #133051 \$649.00
- 1882-CC. PCGS. MS-66. Blast white and great strike with nearly mark-free surfaces that includes a clean cheek. .... #202237 \$849.00
- 1882-O. NGC. MS-63. DMPL. CAC. Flashy frosty white luster. .... #228938 \$425.00
- 1882-O. PCGS. MS-64. .... #123909 \$119.00
- 1882-O. PCGS. MS-65. Frosty white luster and a sharp strike.. . . . . #124121 \$789.00
- 1882-S. PCGS. MS-65. .... #120057 \$139.00



- 1882-S. PCGS. MS-65. DMPL. Blast white with lovely 'cameo' contrast and outstanding eye appeal. Only 12 have graded numerically finer at PCGS. .... #223638 \$2750.00
- 1882-S. PCGS. MS-66. .... #124120 \$249.00



- 1883. NGC. PR-67+. A wonderful proof 'Morgan' with flashy white surfaces framed by a tiny trace of gold at the perimeter. The strike is needle-sharp and the surfaces are virtually flawless. Modest frost on the design features contrasts beautifully against the very deep mirrored fields. A thrilling coin that the next owner will really enjoy! . . #228812 \$17995.00
- 1883. PCGS. MS-64. DMPL. Blast white with very deep mirrored fields and super heavy frost on the design. Outstanding eye appeal. .... #211865 \$525.00
- 1883. PCGS. MS-65. DMPL. Blast white with deep mirrored fields and frosted design features. .... #210080 \$1495.00

- 1883-CC. PCGS. MS-64. DMPL. CAC. Blast white with heavily frosted design elements which contrast beautifully with flashy deep mirrored fields. .... #124499 \$649.00
- 1883-CC. PCGS. MS-65. Satiny white luster and a sharp strike.. . . . . #200138 \$389.00
- 1883-CC. PCGS. MS-65. PL. Frosted and blast white with wonderful 'cameo' contrast.  
..... #212176 \$549.00
- 1883-CC. PCGS. MS-66. Beautiful satiny white luster & a sharp strike. #123564 \$739.00
- 1883-O. PCGS. MS-64. DMPL. Well struck with flashy white luster and very clean surfaces. .... #130649 \$495.00
- 1883-S. PCGS. MS-61. Crisp white luster and a sharp strike. The surfaces are remarkably clean for the grade. .... #127556 \$1249.00
- 1884. PCGS. MS-65. Crisp white luster and well struck. .... #123577 \$255.00
- 1884. PCGS. MS-65+. Blast white and a sharp strike w/semi proof-like fields. #226986 \$369.00
- 1884-CC. PCGS. MS-63. .... #200516 \$225.00
- 1884-CC. PCGS. MS-65. Crisp white luster and a sharp strike.. . . . . #123579 \$399.00
- 1884-CC. PCGS. MS-65. PL. Blast white and a sharp strike with frosted design features.  
..... #125358 \$549.00
- 1884-CC. PCGS. MS-66. CAC. Satiny smooth surfaces with pure white luster. The strike is sharp and there are simply no significant marks. .... #223661 \$895.00
- 1884-CC. PCGS. XF-45. .... #228788 \$195.00
- 1884-O. PCGS. MS-65. .... #134485 \$139.00
- 1885. PCGS. MS-64. .... #207936 \$69.00
- 1885. PCGS. MS-65+. CAC. Blast white.  
..... #229081 \$195.00
- 1885. PCGS. MS-66. Blast white. #205465 \$275.00
- 1885-CC. NGC. MS-65. Flashy white luster and a sharp strike.. . . . . #204690 \$995.00
- 1885-CC. PCGS. AU-58. CAC. Sharp detail with lustrous golden-tan surfaces. #229033 \$750.00



- 1885-CC. PCGS. MS-64. DMPL. Blast white with reflective 'watery' fields and heavy frost on the design. .... #200357 \$1549.00
- 1885-CC. PCGS. MS-65. Blast white and a sharp strike. .... #200729 \$1049.00
- 1885-O. NGC. MS-64. .... #126886 \$69.00
- 1885-O. NGC. MS-65. .... #120062 \$159.00
- 1885-O. NGC. MS-65+. CAC. #228848 \$189.00
- 1885-O. PCGS. MS-65. .... #123058 \$139.00
- 1885-O. PCGS. MS-65. CAC. #229002 \$165.00
- 1885-O. PCGS. MS-66. .... #122175 \$269.00
- 1885-O. PCGS. MS-66+. Satiny white surfaces with a faint champagne hue. The strike is sharp and there are absolutely no marks of any significance. .... #227236 \$399.00



- 1885-S. PCGS. MS-63. Flashy luster and a sharp strike. . . . . #118634 \$329.00
- 1885-S. PCGS. MS-64. Crisp white luster and a sharp strike. . . . . #203937 \$599.00
- 1885-S. PCGS. MS-64+. CAC. Satiny white luster with minimal marks and a sharp strike. . . . . #137902 \$749.00
- 1886. NGC. MS-65. A superb Gem from a mint sewn bag we recently sent to NGC! . . . . . #121670 \$139.00
- 1886. NGC. MS-67. Sharply struck with clean satiny white surfaces. . . . . #211592 \$799.00
- 1886. PCGS. MS-64. DMPL. Crisp white luster with frosted devices and very flashy deep mirrored fields. . . . . #226561 \$425.00
- 1886. PCGS. MS-65. . . . . #122401 \$139.00
- 1886. PCGS. MS-65+. . . . . #225047 \$179.00
- 1886. PCGS. MS-66. Blast white. #135350 \$259.00
- 1886. PCGS. MS-66+. Rich satiny white luster with a thin line of yellow-gold at the rim. . . . . #219132 \$359.00
- 1886-O. NGC. MS-61. A very sharp strike with nice crisp original lustrous surfaces. . . . . #136150 \$1195.00
- 1886-S. PCGS. MS-62. Blast white and well struck. . . . . #205337 \$389.00
- 1887. NGC. MS-64. . . . . #204686 \$69.00
- 1887. PCGS. MS-65. CAC. . . . . #131179 \$165.00
- 1887. PCGS. MS-65. . . . . #134424 \$139.00
- 1887. PCGS. MS-66. Blast white. #205329 \$269.00
- 1887-S. PCGS. MS-63. . . . . #120716 \$259.00
- 1887-S. PCGS. MS-64. CAC. Blast white and a sharp strike. . . . . #211867 \$695.00
- 1887-S. PCGS. MS-64. Vibrant luster & a sharp strike w/nice clean surfaces. #204255 \$569.00



- 1887-S. PCGS. MS-66. Booming white luster has produced a strong cascading 'cartwheel' on this beautiful well struck dollar. The surfaces are devoid of significant marks and the eye appeal will satisfy even the fussiest collector. Only a single example has graded numerically finer at PCGS. #221820 \$5795.00
- 1888. NGC. MS-65. . . . . #203939 \$185.00
- 1888-O. NGC. MS-65. Satiny white luster and a sharp strike. . . . . #120718 \$449.00
- 1888-O. PCGS. MS-64. . . . . #123519 \$109.00
- 1888-S. PCGS. MS-64. Frosty white luster and a great strike. . . . . #124105 \$859.00
- 1889. PCGS. MS-65. Cream-white luster and a sharp strike. . . . . #127689 \$249.00
- 1889. PCGS. MS-66. Sharply struck w/shimmering white luster & clean surfaces including a nearly flawless cheek. . . . . #216318 \$750.00
- 1889-O. PCGS. MS-63. Vibrant original luster with a hint of color and a strong strike. . . . . #128525 \$339.00

- 1889-O. PCGS. MS-63+. Satiny white surfaces and a solid strike. . . . . #135811 \$449.00
- 1889-S. PCGS. MS-63. CAC. Blast white and a sharp strike. . . . . #228570 \$409.00
- 1889-S. PCGS. MS-63. Blast white and a sharp strike. . . . . #204847 \$349.00
- 1889-S. PCGS. MS-63+. Blast white and a sharp strike. . . . . #204848 \$399.00
- 1889-S. PCGS. MS-65+. A needle sharp strike with super rich luster over semi proof-like surfaces. Ms. Liberty's cheek is particularly clean and a faint golden hue gives this coin wonderful eye appeal. . . . . #221821 \$2495.00
- 1890. PCGS. MS-64. DMPL. Intense white luster w/deep mirrored fields. The design features are sharply defined & heavily frosted which has produced a dramatic 'cameo' effect. About as nice as this date comes w/just 10 grading numerically finer at PCGS. #206679 \$1995.00
- 1890-CC. PCGS. MS-64. Vibrant white luster and a sharp strike. . . . . #123633 \$1375.00
- 1890-O. PCGS. MS-64. Crisp white luster and a solid strike. . . . . #200286 \$279.00
- 1890-O. PCGS. MS-64. PL. Blast white and a sharp strike. . . . . #206162 \$499.00



- 1890-O. PCGS. MS-66. A fantastic example of this better date w/blast white luster, no significant marks, & a great strike. The fields are semi proof-like and the eye appeal is outstanding! Just 29 have graded 66 at PCGS with a single piece grading 66+. #223639 \$8495.00
- 1890-S. PCGS. MS-63. . . . . #124460 \$109.00
- 1890-S. PCGS. MS-65. A beautiful Gem with blazing luster and very clean surfaces. . . . . #125919 \$895.00
- 1891. PCGS. MS-64+. Nearly a Gem w/cream-white luster & minimal marks. #210243 \$749.00
- 1891-CC. PCGS. MS-64. CAC. Satiny white luster and a sharp strike. . . . . #213341 \$1365.00
- 1891-CC. PCGS. MS-64+. Blast white and a great strike with frosted devices and nice clean surfaces. . . . . #205785 \$1695.00
- 1891-O. PCGS. MS-63. Satiny white luster with pleasing surfaces and an above average strike. . . . . #134335 \$349.00
- 1891-O. PCGS. MS-64. PL. CAC. A thrilling 1891-O dollar with cream white luster and a rarely seen full strike. The contrast between the frosted design features and the mirrored fields has produced an appealing 'cameo'. Only a single coin has graded finer at PCGS at MS-64+. . . . . #210380 \$4950.00
- 1892. PCGS. MS-63. Nice original frosty white luster and well struck. #206358 \$495.00
- 1892. PCGS. MS-63+. Crisp white luster and a solid strike. . . . . #202231 \$565.00

- 1892. PCGS. MS-64. CAC. Vibrant white luster and a strong strike with minimal marks. Everything you could want in an MS-64 'Morgan'! . . . . . #229010 \$1295.00
- 1892-CC. PCGS. MS-63. Beautiful frosty white luster with a great strike and semi proof-like fields. . . . . #227537 \$2250.00
- 1892-O. PCGS. MS-63. Frosty white luster and a sharp strike. Looks a lot nicer than an MS-63! . . . . . #123411 \$489.00
- 1892-S. PCGS. AU-55. Well struck & lustrous w/light silver-gray surfaces. #228362 \$3650.00
- 1893. NGC. MS-62. Crisp white luster and a bold strike. . . . . #122221 \$1195.00
- 1893. PCGS. MS-63. CAC. Beautiful frosty white luster w/a tiny trace of gold at the rim. Outstanding for the grade & a tough coin/grade to find with CAC approval. #126682 \$1559.00
- 1893-CC. PCGS. VG-8. A pleasing problem-free example of this better date. #214815 \$325.00
- 1893-O. NGC. AU-58. Just a touch of 'rub' away from being mint state. The strike is solid and the surfaces are white and lustrous. . . . . #128040 \$1795.00
- 1893-S. PCGS. F-15. A pleasing and well-detailed example of the 'key' date to this popular series. . . . . #140472 \$4175.00



- 1893-S. PCGS. VF-20. CAC. Outstanding for the grade with nice original surfaces and solid detail. . . . . #206066 \$5495.00
- 1894. PCGS. AU-58. Lustrous silver-gray surfaces and sharp detail. #126676 \$2049.00
- 1894. PCGS. MS-62. Crisp white luster and a bold strike w/very few marks. #224744 \$4150.00



- 1894. PCGS. MS-63. The 110,000 mintage is the second lowest for a business strike in the series and just 10,000 more than the '93-S. This is a crisp white example that is very sharply struck with excellent eye appeal. . . . . #128077 \$4995.00
- 1894. PCGS. VG-10. One of the 'keys' to the series with a mintage of just 110,000 coins. . . . . #209929 \$825.00
- 1894. PCGS. XF-40. Strong detail with very nice problem-free surfaces. One of the 'keys'

to the series with just 110,000 minted.  
 ..... #131896 \$995.00  
 1894-S. NGC. MS-61. Crisp white luster  
 and well struck. .... #227183 \$985.00



1895-O. NGC. MS-61. Nice original silver-white luster and a strong strike. The minimal marks that define the grade are relatively trivial and don't distract from the strong eye appeal. .... #140217 \$18500.00  
 1895-O. PCGS. AU-55+. A nice looking example of this scarce date with sharp detail and crisp white luster. The only 55+ graded at PCGS. .... #229112 \$2595.00  
 1896. NGC. MS-65. .... #127498 \$169.00  
 1896-O. PCGS. AU-58. Crisp white luster and a sharp strike. .... #119367 \$389.00  
 1897-O. PCGS. AU-58. Well struck with lustrous white surfaces. .... #130190 \$325.00  
 1897-O. PCGS. MS-61. Crisp white luster and a sharp strike. Outstanding for the grade. .... #129547 \$1395.00  
 1897-S. PCGS. MS-65. PL. Blast white with highly reflective mirrored fields that contrast beautifully with heavily frosted design elements. .... #210244 \$895.00  
 1897-S. PCGS. MS-66. Beautiful frosty white luster and a sharp strike with nice clean surfaces. Super quality! . . . #129587 \$1195.00  
 1897-S. PCGS. MS-66. A beautiful example of this better date with satiny white luster over outstanding surfaces that are devoid of significant marks. .... #129587 \$1195.00  
 1898. PCGS. MS-64. DMPL. Flashy white luster and a great strike with beautiful mirrored fields. .... #212455 \$489.00  
 1898-O. NGC. MS-66. Blast white and a sharp strike. .... #140316 \$239.00  
 1898-O. PCGS. MS-65. PL. Blast white with nice cameo contrast. .... #226000 \$325.00  
 1898-O. PCGS. MS-66. PL. CAC. Flashy white luster and a great strike with mirrored fields and frosted devices. Only 4 proof-like examples have graded numerically finer at PCGS. .... #227460 \$895.00  
 1898-O. PCGS. MS-66+. CAC. Blast white with silky smooth surfaces that are nearly mark-free. .... #211885 \$455.00  
 1899. PCGS. MS-65. Satiny white luster and well struck with virtually mark-free surfaces. .... #134765 \$779.00  
 1899. PCGS. MS-65+. CAC. A flashy brilliant core with delicate toning mainly at the periphery. .... #221331 \$1235.00  
 1899-O. PCGS. AU-55. VAM 4, Micro O. Top 100 variety. .... #227306 \$395.00  
 1899-O. PCGS. MS-65. .... #119221 \$145.00

1899-S. PCGS. MS-65. CAC. Flashy white luster and a sharp strike with semi proof-like fields that are nearly mark-free. An outstanding example of this better date. #202952 \$2469.00  
 1900-O. PCGS. MS-65. .... #125704 \$145.00  
 1900-O. PCGS. MS-66. Blast white w/beautiful nearly mark-free surfaces. .... #208892 \$359.00  
 1900-O. PCGS. MS-66+. CAC. Blast white with nearly mark-free satiny surfaces. .... #220387 \$999.00  
 1900-O/CC. PCGS. MS-63. Satiny white luster and a sharp strike. .... #125228 \$739.00  
 1900-S. NGC. MS-64. Vibrant watery-white luster and a strong strike. High-end for the grade! .... #205170 \$565.00



1901. PCGS. AU-58. Doubled Die Reverse. VAM-3. Bold doubling on most the reverse with the Tail Feathers and Arrows being particularly dramatic. One of the most well-known and most sought-after of all the VAM varieties. This example is nearly mint state with sharp detail and a white lustrous core framed nicely by a touch of gold at the rim. Very scarce in high grade with just 4 coins grading finer at PCGS. . . . #228796 \$12500.00  
 1902. NGC. PR-65. Beautiful brilliant proof surfaces with a touch of iridescent turquoise and gold at the rim. The strike is very sharp and the surfaces are nearly mark-free. .... #227127 \$5795.00  
 1902. PCGS. MS-65. Beautiful satiny white surfaces and a sharp strike. . . #125656 \$395.00  
 1902. PCGS. MS-66. Shimmering white luster and a great strike with super clean surfaces. .... #224398 \$795.00  
 1902-S. PCGS. MS-63. Blast white and a sharp strike. Outstanding for the grade. .... #204527 \$649.00  
 1902-S. PCGS. MS-63. CAC. Blast white and well struck. Outstanding for the grade. .... #229174 \$719.00  
 1902-S. PCGS. MS-64+. Cream white luster and a strong strike. .... #212016 \$1250.00  
 1902-S. PCGS. MS-65. Well struck with satiny luster. Nearly blast white. . . #127640 \$1995.00  
 1903-O. PCGS. MS-66. Blast white and a great strike. Super quality! . . . #207202 \$879.00  
 1903-O. PCGS. MS-66+. CAC. Dazzling white luster and a great strike with no significant marks and just a trace of gold at the rim to attest to this beautiful coin's originality. .... #210565 \$1795.00  
 1904. PCGS. MS-63. Satiny white luster and a sharp strike. .... #123186 \$259.00  
 1904-O. PCGS. MS-65. PL. Super flashy blast white luster & a sharp strike. #128093 \$269.00

1904-O. PCGS. MS-66. Satiny white luster and a sharp strike. .... #227708 \$295.00  
 1904-S. PCGS. AU-58. Lustrous light silver-white surfaces and strong detail. . . #221685 \$1895.00  
 1921. NGC. MS-66. .... #127553 \$569.00  
 1921-D. NGC. MS-65. Satiny white and well struck. .... #200760 \$285.00  
 1921-S. PCGS. MS-65. Crisp white luster and a sharp strike. .... #135197 \$765.00  
 1921-S. PCGS. MS-66. Blast white with nicely frosted design features and a needle-sharp strike. Super quality! . . . #209663 \$2995.00

**Peace Dollars**

1921. PCGS. MS-64. CAC. Vibrant white luster and a sharp strike with nice clean surfaces. .... #137725 \$895.00  
 1922. NGC. MS-65. .... #200874 \$109.00  
 1922-D. NGC. MS-65. A nearly mark-free blast white Gem. Outstanding for the grade. .... #137335 \$525.00  
 1922-D. PCGS. MS-65. Blast white & a great strike w/super clean surfaces. #125231 \$499.00  
 1923. NGC. MS-65. .... #122862 \$129.00  
 1923. PCGS. MS-66. CAC. Satiny mint luster and a sharp strike. .... #125308 \$469.00  
 1923-D. PCGS. MS-63. .... #124488 \$165.00  
 1923-S. NGC. MS-64. Crisp white luster and well struck. .... #125679 \$325.00  
 1923-S. PCGS. MS-64+. CAC. Bright satiny luster and a sharp strike with very clean surfaces. Looks as nice or nicer than most 65's we see! .... #224736 \$750.00  
 1924-S. PCGS. MS-63+. Flashy white luster and a sharp strike. .... #229076 \$529.00  
 1925-S. PCGS. MS-63. Blast white and a sharp strike. .... #124228 \$259.00  
 1925-S. PCGS. MS-64. Satiny cream-white luster and a sharp strike. .... #124475 \$689.00



1925-S. PCGS. MS-64+. A pleasing cream-white example of this better date w/minimal marks and a solid strike. . . #206662 \$1695.00  
 1926. PCGS. MS-65. Flashy brilliant luster and a sharp strike. .... #204894 \$399.00  
 1926-D. PCGS. MS-64+. Outstanding for the grade with blast white luster and a sharp strike. .... #211877 \$495.00  
 1926-D. PCGS. MS-65. Vibrant luster and a great strike with nearly flawless surfaces. .... #124185 \$895.00  
 1926-S. PCGS. MS-64. Blast white and a sharp strike. .... #201127 \$249.00  
 1926-S. PCGS. MS-64+. Creamy white luster and a sharp strike. .... #209224 \$369.00  
 1926-S. PCGS. MS-65. Beautiful blazing mint luster: mostly white with a touch of delicate



toning. The strike is extremely strong and this premium quality Gem has outstanding eye appeal. . . . . #128018 \$849.00  
 1927-D. PCGS. MS-63. Crisp original silver-white luster & a sharp strike. #124483 \$419.00  
 1927-S. PCGS. MS-63. Shimmering white luster and a sharp strike. . . . #200734 \$499.00  
 1927-S. PCGS. MS-64. CAC. Intense white luster with a slight champagne hue on the obverse. The strike is needle-sharp and the surfaces are outstanding & nearly mark-free. . . . . #121231 \$1195.00



1927-S. PCGS. MS-64+. CAC. Blast white and a sharp strike with exceptionally clean surfaces. . . . . #222732 \$1885.00  
 1928. PCGS. MS-64. Blast white and a sharp strike with very clean surfaces. Compares favorably with most coins in MS-65 holders! . . . . . #213472 \$995.00  
 1928. PCGS. MS-64. CAC. Rich satiny luster and a sharp strike with nice clean surfaces. . . . . #128699 \$1125.00  
 1928-S. NGC. MS-63. Blast white and truly outstanding for the grade. . . . #135422 \$435.00  
 1928-S. PCGS. MS-63. Blast white & a sharp strike. Outstanding for the grade. . . . . #123591 \$425.00  
 1934. NGC. MS-64+. Vibrant brilliant luster and a great strike with nice clean surfaces. Nearly a Gem. . . . . #228863 \$399.00  
 1934. PCGS. MS-65. A better date with vivid luster and a sharp strike. . . . #140270 \$595.00  
 1934-D. PCGS. MS-63+. Crisp white luster and a sharp strike. . . . . #228941 \$375.00  
 1935. PCGS. MS-64. . . . . #127576 \$219.00  
 1935. PCGS. MS-65. Beautiful blast white luster and a sharp strike. . . . #139241 \$595.00  
 1935-S. NGC. MS-62. Satiny white luster and well struck. Looks better than an MS-62! . . . . . #125786 \$339.00  
 1935-S. PCGS. MS-64. Blast white and a sharp strike w/nice clean surfaces. . . #200680 \$625.00  
 1935-S. PCGS. MS-65. Well struck with nice satiny white surfaces that show minimal marks. . . . . #135064 \$1250.00

**Eisenhower Dollar**

1978. PCGS. MS-66+. A condition rarity w/just 6 coins grading finer at PCGS. #226342 \$399.00

**Early Silver Commemoratives**

1915-S Panama-Pacific. PCGS. AU-58. Brilliant white luster and sharp detail. #204720 \$455.00  
 1921 Alabama, 2x2. NGC. MS-65. Flashy pure white luster & a sharp strike. #127113 \$1039.00

1921 Missouri. PCGS. MS-63. Crisp white luster and a sharp strike. Outstanding for the grade. . . . . #217645 \$725.00  
 1921 Missouri. PCGS. MS-64. Outstanding for the grade with brilliant cream-white luster and a sharp strike. . . . . #219113 \$859.00  
 1921 Alabama, 2x2. PCGS. MS-65. Blast white and a sharp strike with silky smooth surfaces. . . . . #204908 \$1095.00  
 1921 Pilgrim. PCGS. MS-66. Flashy luster and nearly mark-free. . . . . #223174 \$649.00  
 1922 Grant. PCGS. MS-64. Crisp white luster and a sharp strike. . . . . #211111 \$229.00  
 1922 Grant. PCGS. MS-65. Crisp luster and well struck with lavender and gray toning. . . . . #211720 \$495.00  
 1923-S Monroe. NGC. MS-65. A great looking Monroe with blast white luster and a sharp strike. . . . . #131782 \$650.00  
 1925 Stone Mt. NGC. MS-65. . #135207 \$165.00



1925 Norse-American. NGC. MS-66. Thick Planchet. An amazing blast white Premium Gem. . . . . #229084 \$1195.00  
 1925 Lexington. PCGS. MS-65. Russet-gold toning. . . . . #135338 \$295.00  
 1925 Norse-American. PCGS. MS-65. CAC. Thick Planchet. A beautiful crisp white Gem example of this popular U.S. Mint commemorative medal. . . . #219051 \$595.00  
 1925 Lexington. PCGS. MS-66. Vibrant white luster and a great strike. . . . #215317 \$695.00  
 1925. Stone Mountain. PCGS. MS-66 CAC. . . . . #127203 \$289.00  
 1926 Sesquicentennial. PCGS. MS-64. Flashy white luster. . . . . #133365 \$225.00  
 1926-S Oregon Trail. PCGS. MS-66. . . . . #217491 \$279.00  
 1933-D Oregon Trail. PCGS. MS-65. Blast white. . . . . #133828 \$650.00  
 1934. Maryland. NGC. MS-66 #221167 \$259.00  
 1934 Boone. PCGS. MS-65. . #222026 \$165.00  
 1934 Texas. PCGS. MS-65. . . #137663 \$175.00  
 1934 Maryland. PCGS. MS-66. #210408 \$269.00  
 1935 Hudson. PCGS. MS-65. Well struck and lustrous with champagne-gold toning. . . . . #209595 \$949.00  
 1935 Hudson. PCGS. MS-65+. Well struck with minimal marks & nice original lustrous surfaces. . . . . #223713 \$1195.00  
 1935 Texas. PCGS. MS-66. Blast white. . . . . #121149 \$259.00  
 1935-D Arkansas. PCGS. MS-66. Rich satiny white luster. 5,005 minted. . . #229020 \$375.00  
 1935-S San Diego. PCGS. MS-66. #133314 \$159.00  
 1936 Gettysburg. NGC. MS-64. Crisp white luster and outstanding for the grade. . . . . #203841 \$569.00



1935/4-PDS Boone. PCGS. MS-66. This is the rarest three-coin commemorative set with a mere 2,003 sets made. The 'P' and the 'S' in this set are both CAC approved. . . . . #228902 \$2295.00  
 1936 Cleveland. NGC. MS-66. #214798 \$195.00  
 1936 Columbia. NGC. MS-66. CAC. . . . . #128055 \$279.00  
 1936 Robinson-Arkansas. PCGS. MS-64. . . . . #205324 \$145.00  
 1936 Columbia. PCGS. MS-65. Blazing luster and a sharp strike. . . . . #131290 \$249.00  
 1936 Robinson-Arkansas. PCGS. MS-65. . . . . #135249 \$179.00  
 1936 Elgin. PCGS. MS-66. . . #222020 \$249.00  
 1936 Gettysburg. PCGS. MS-66. Bright white luster and a sharp strike. Excellent eye appeal. . . . . #223716 \$1095.00  
 1936 Texas. PCGS. MS-66. . . #217113 \$249.00  
 1936 Albany. PCGS. MS-67. Rich luster with a faint champagne hue and delicate gold toning at the rim. . . . . #213142 \$749.00  
 1936 Norfolk. PCGS. MS-67. Rich champagne-white luster and nearly flawless surfaces. . . . . #136709 \$469.00  
 1936 Norfolk. PCGS. MS-67. CAC. Cream-white luster and nearly flawless. . . #225526 \$499.00  
 1936 Oregon Trail. PCGS. MS-67. Cream white luster and virtually flawless! . #223999 \$549.00  
 1936 Norfolk. PCGS. MS-67+. CAC. Nearly perfect with vivid champagne-white luster and mark-free surfaces. . . . #220853 \$575.00



1936 Norfolk. PCGS. MS-68. Creamy white luster with a touch of toning at the rim. The strike is needle-sharp and surfaces are nearly perfect. Amazing quality! . . #137533 \$1095.00  
 1936-D Texas. NGC. MS-67. A beautiful satiny white Superb Gem. . . . . #228940 \$439.00  
 1936-D Arkansas. PCGS. MS-64. #227834 \$109.00  
 1936-D Cincinnati. PCGS. MS-65. Crisp white luster and a sharp strike. . . . #208642 \$425.00  
 1936-D Boone. PCGS. MS-66. #217925 \$229.00  
 1936-D Columbia. PCGS. MS-66. #227475 \$269.00  
 1936-D Cincinnati. PCGS. MS-66+. CAC. A beautiful coin w/vibrant mint luster draped in attractive delicate toning. . #137434 \$895.00  
 1936-PDS Rhode Island. PCGS. MS-65. 3 piece set: 65, 65 CAC, 65 CAC. . . . #226476 \$449.00  
 1936-PDS Cincinnati. PCGS. Set. 3 piece set grading: MS-66, 65 CAC, 65. #227228 \$1695.00

- 1936-S Cincinnati. PCGS. MS-63. Just 5,006 minted. . . . . #222515 \$349.00
- 1936-S Cincinnati. PCGS. MS-64. Flashy luster and a sharp strike. . . . . #208188 \$359.00
- 1936-S Columbia. PCGS. MS-66. CAC. Blazing luster with a touch of delicate peripheral toning. Super quality. . . . . #133363 \$325.00
- 1937 Boone. PCGS. MS-66. . . #136426 \$249.00
- 1937 Antietam. PCGS. MS-67. Blast white and nearly flawless. . . . . #212428 \$1189.00
- 1937 Roanoke. PCGS. MS-67. CAC. A satiny ice-white core with delicate russet toning at the rim. Well struck and nearly flawless. . . . . #203125 \$575.00
- 1937-D Texas. NGC. MS-66. Blast white and a sharp strike. . . . . #222452 \$249.00
- 1937-D Arkansas. PCGS. MS-66. A beautiful Premium Gem with a light champagne-gold hue. Just 5,505 minted. . . . #229142 \$425.00
- 1937-D Texas. PCGS. MS-66. Flashy white luster. Just 6,605 minted. . . #133326 \$269.00
- 1937-D Texas. PCGS. MS-67. CAC. Beautiful creamy white surfaces. Just 6,605 minted. . . . . #214195 \$599.00
- 1937-PDS Texas. PCGS. 3 piece set grading: MS-65, 66, 65. . . . . #228901 \$639.00
- 1937-S Texas. NGC. MS-66. Blast white. Just 6,637 issued. . . . . #219469 \$259.00
- 1937-S Boone. PCGS. MS-66. Satiny white luster w/beautiful clean surfaces. Just 2,506 minted. . . . . #227433 \$585.00
- 1937-S Texas. PCGS. MS-67. CAC. Shimmering bright champagne-white luster over nearly flawless surfaces. . . . . #221138 \$675.00
- 1937-S Texas. PCGS. MS-67. Satiny white luster with nearly flawless surfaces. #221014 \$609.00
- 1938 Oregon Trail. PCGS. MS-66. #139074 \$309.00



- 1938 New Rochelle. PCGS. SP-65. 50 Specimen strikes were produced for distribution to dignitaries and members of the Westchester Co. Coin Club. These were struck on proof planchets using polished dies and produced coins that resemble proofs - mirror surfaces and needle-sharp detail. This is a very flashy blast white example w/outstanding surfaces that are nearly mark-free. . . #228973 \$7250.00
- 1938-PDS Oregon Trail. PCGS. A beautifully matched satiny white set. In consecutively numbered holders. Coins grade: MS-66 CAC, MS-67 CAC, MS-66+ CAC. #136121 \$1365.00
- 1939-D Oregon Trail. PCGS. MS-67. A nearly flawless Superb Gem w/rich creamy luster. Only 3,004 minted. . . . . #205602 \$925.00
- 1946 Iowa. PCGS. MS-66. . . #118846 \$129.00
- 1946 Iowa. PCGS. MS-67. CAC. #221335 \$275.00
- 1948-D Booker T. Washington. PCGS. MS-66. CAC. . . . . #222197 \$189.00



- 1939-PDS Arkansas. PCGS. A pleasing 3-coin matching set in consecutively numbered holders. The coin grades are: MS-64 CAC, 65 CAC, 65. . . . . #228903 \$1625.00
- 1949 Booker T. Washington. PCGS. MS-66. Super quality with blast white surfaces. . . . . #224624 \$199.00
- 1949 Booker T. Washington. PCGS. MS-66. CAC. . . . . #229123 \$199.00
- 1950-D Booker T. Washington. PCGS. MS-66. CAC. . . . . #226376 \$165.00
- 1952-PDS Washington-Carver. PCGS. 3 coin set grading: MS-64, 64, 65. . #228974 \$179.00
- 1952-S. Washington-Carver. PCGS. MS-65. . . . . #136418 \$79.00
- 1953 Washington-Carver. PCGS. MS-66. CAC. Creamy-white luster and a sharp strike. . . . . #229026 \$385.00
- 1954-S Washington-Carver. NGC. MS-66. . . . . #229097 \$169.00

**Early Gold Commemoratives**

- 1903 La. Purchase - Jefferson \$1. NGC. MS-65. Beautiful original frosty luster and a sharp strike. . . . . #220545 \$1065.00
- 1903 La. Purchase - McKinley \$1. PCGS. MS-63. Well struck with crisp mint luster. . . . . #127753 \$585.00



- 1903 La. Purchase - McKinley \$1. PCGS. MS-67. Virtually mark-free & a sharp strike w/beautiful original lustrous surfaces. #227192 \$2695.00



- 1903 La. Purchase - McKinley \$1. PCGS. PR-63. CAC. 17,500 business strikes minted, but just 100 proofs! They were distributed to government officials and officials at the LA. Purchase Expo - not collectors. Thus many were mishandled & even lost. This example is well preserved with deeply reflective orange-gold fields and frosted yellow-gold design features. A beautiful coin and a true rarity! . . . . . #225620 \$10950.00
- 1904 Lewis and Clark \$1. PCGS. MS-64. Sharply struck with flashy luster over semi proof-like surfaces. . . . . #218726 \$1795.00
- 1905 Lewis and Clark \$1. NGC. AU-58. Nearly mint state with yellow-gold luster and strong detail. . . . . #214754 \$749.00
- 1922 Grant \$1. NGC. MS-63. CAC. Bright gold luster on a coin that looks a heck of a lot nicer than the assigned grade! . . #229158 \$1295.00

- 1922 Grant \$1, Star. PCGS. MS-65. Satiny rich gold luster and a sharp strike with nearly mark-free surfaces. Just 5,016 minted. . . . . #220225 \$1685.00

**One Dollar Gold Coins**

- 1849-D. PCGS. AU-58. Very nearly mint state with a sharp strike & nice lustrous surfaces. A scarce date with a mintage of just 21,588 and the first Dahlonega Mint gold dollar. . . . . #226724 \$4250.00



- 1851-D. NGC. AU-58. CAC. Very well struck & lustrous with just a touch of 'rub' preventing a mint state grade. A dramatic die break runs from the reverse rim to the I of AMERICA, thru the 51 of the date & finally disappearing between the two L's of DOLLAR. A desirable example of this scarce date that saw just 9,882 minted. . . . . #228797 \$4595.00
- 1851-O. NGC. MS-62. Sharply struck w/nice original lustrous surfaces. . . #224383 \$875.00
- 1852. PCGS. MS-64. Nearly a Gem with satiny orange-gold luster, no significant marks, and a sharp strike. . . . . #131478 \$1095.00
- 1852-O. PCGS. AU-55. An expensive New Orleans Mint gold dollar. . . #228845 \$445.00
- 1853. PCGS. MS-64+. Sharply struck with rich lustrous surfaces. . . . #224800 \$1075.00
- 1853-O. PCGS. MS-61. Well struck with original antique-gold luster. . #229041 \$649.00
- 1854. NGC. AU-58. Type 2. CAC. Sharp detail w/pleasing original surfaces. #205225 \$799.00
- 1854. PCGS. AU-58. CAC. T-2. Well detailed and nearly mint state with lustrous orange-gold surfaces. . . . . #225693 \$895.00
- 1854. PCGS. AU-58. T-2. Well detailed with original lustrous surfaces. . . #210343 \$695.00
- 1855. NGC. MS-61. Well struck including a bold date with lustrous yellow-gold surfaces. P.Q. for the grade! . . . . #205803 \$1295.00
- 1855. PCGS. AU-58. Sharp detail with lustrous surfaces. A coin a MS-63 look except for the barest touch of 'rub' . . . . #226248 \$799.00
- 1855-O. NGC. AU-53. Bold detail & lustrous surfaces. The only New Orleans Mint T-2 gold dollar. Just 55,000 minted. . #228890 \$1995.00
- 1856. PCGS. MS-64. Slanted 5. Well struck w/satiny mint luster & beautiful surfaces that are free of major abrasions. . #227461 \$969.00



- 1857-S. NGC. MS-61. A scarce and underrated date w/a mintage of just 10,000 & no more than 20 mint state survivors. This piece is exceptionally nice for the grade with sharp detail and fresh frosty mint luster. #228898 \$5250.00
- 1858. PCGS. MS-65. A beautiful Gem with satiny peach-gold luster and nearly flawless surfaces. . . . . #227190 \$4500.00

\*Item Code # is located next to price.



1859. NGC. MS-62. Well struck w/rich satiny luster. Dramatic die clashing on both sides. . . . . #227649 \$455.00



1859-C. PCGS. AU-58. An issue that typically comes poorly struck on crude planchets and is thus very difficult to grade. This example is extremely well struck for the date and has lustrous surfaces that show no sign of wear. One could easily argue that this rare dollar is in fact mint state. Just 5,235 minted. . . . . #227210 \$5850.00

1860-S. NGC. AU-58. Flashy luster with nice clean surfaces and the initial appearance of a mint state coin. . . . . #227546 \$1375.00

1862. PCGS. MS-63. Crisp original mint luster and attractive surfaces. Popular Civil War date. . . . . #217873 \$650.00

1869. NGC. MS-60+. Bright flashy luster & a sharp strike. 5,900 minted. . . . . #228907 \$1195.00

1873. PCGS. MS-63. Open 3. Satiny gold luster and a sharp strike. . . . . #139615 \$545.00

1874. PCGS. MS-65. Beautiful rich gold luster and a strong strike with nice clean surfaces. . . . . #223834 \$1195.00

1877. NGC. MS-61. Sharply struck with semi proof-like surfaces. Just 3,900 minted. . . . . #228909 \$995.00

1879. PCGS. MS-63. Well struck with flashy deep gold luster. Only 3,000 minted. . . . . #229160 \$1295.00

1883. PCGS. MS-64. A pleasing example of this low mintage date w/satiny yellow-gold luster, a sharp strike, and no significant marks. Just 10,800 minted. . . . . #225213 \$969.00

1885. NGC. MS-63. CAC. Sharply struck with flashy luster over semi proof-like surfaces. . . . . #201425 \$749.00

**Two 1/2 Dollar Gold Coins**

1836. PCGS. XF-40. Block 8. A pleasing example of the Classic Head 'type'. . . . . #228181 \$775.00

1843-C. NGC. AU-55. Large Date. Solid detail & lustrous surfaces on this popular Charlotte \$2 1/2 Liberty. Just 23,076 minted. . . . . #229143 \$3750.00

1843-D. NGC. AU-55. Strong detail w/lustrous surfaces. Very attractive with none of the planchet problems and striking issues that often plague this issue. . . . . #229080 \$3450.00

1843-O. NGC. AU-58. Small Date. Sharply struck and lustrous. . . . . #215680 \$895.00

1845. PCGS. XF-40. . . . . #229121 \$399.00

1846-O. PCGS. XF-40. A pleasing example of this better date from the popular New Orleans Mint. Only 62,000 minted. . . . . #229051 \$489.00

1853. PCGS. MS-63+. Bright apricot-gold luster and a solid strike with very few marks for the grade. . . . . #228854 \$995.00

1854. NGC. MS-61. Flashy and very nice for the grade. . . . . #229122 \$525.00

1856-O. PCGS. AU-55. A scarce & underrated date w/just 21,100 minted & only 3 graded

mint state at PCGS. This is a pleasing Choice AU with sharp detail. . . . . #228920 \$2595.00



1856. PCGS. MS-64. Well struck with vibrant yellow-gold luster. A tough date in high grade with just 10 coins grading numerically finer at PCGS. . . . . #229161 \$2895.00

1861. PCGS. MS-64. New Reverse. Sharply struck w/satiny gold luster. . . . . #202502 \$2350.00

1869-S. NGC. AU-58. Strong detail with pleasing original lustrous surfaces. Just 29,500 minted. . . . . #229014 \$1439.00

1871. PCGS. AU-58. Strong detail & lustrous. A scarce date with a mere 5,320 minted. . . . . #223658 \$1750.00

1878. PCGS. MS-65. A tough date in high grade with just 11 coins grading numerically finer at PCGS. This example is sharply struck and nearly mark-free with a vibrant orange-gold mint 'bloom!' . . . . . #223811 \$2495.00

1879. PCGS. MS-63. Crisp yellow-gold luster with minimal marks and a strong strike. A modest 88,960 minted. . . . . #225050 \$695.00

1879. PCGS. MS-64. Well struck with vibrant luster and clean surfaces. A modest 88,960 minted. . . . . #207350 \$1095.00

1897. PCGS. MS-66. Vibrant lemon-gold luster & an excellent strike. Just 29,768 minted but priced at a 'type' coin level. #225149 \$2695.00

1898. PCGS. MS-64. Rich sun-gold luster & a sharp strike. 24,000 minted. . . . . #222049 \$825.00



1898. PCGS. MS-66. CAC. A fantastic coin w/thick apricot-gold luster and a very sharp strike. The surfaces are extremely clean with no noteworthy marks! Just 24,000 minted. . . . . #225682 \$3250.00

1899. PCGS. MS-65. Sharply struck with nice satiny yellow-gold luster. A great looking example of this better date which saw just 27,200 minted. . . . . #225122 \$1625.00

1903. PCGS. MS-65. CAC. Beautiful rich golden luster and a sharp strike with surfaces that are devoid of significant abrasions. . . . . #227441 \$999.00

1903. PCGS. MS-66. Bright orange-gold luster & a sharp strike. Great 'skin'!. #223929 \$1195.00

1912. PCGS. MS-64. Frosty mint luster and a great strike with nice clean surfaces. . . . . #227389 \$2049.00

1913. PCGS. MS-64. CAC. Gorgeous rich satiny luster and a great strike with super eye appeal. . . . . #225605 \$1249.00

1913. PCGS. MS-64+. CAC. Super rich orange-gold luster and a great strike with beautiful clean surfaces. . . . . #213727 \$1495.00

1914-D. PCGS. MS-63. Bright orange-gold luster over silky smooth surfaces. . . . . #135463 \$1049.00

1925-D. NGC. MS-65. Rich yellow-gold luster and a sharp strike with minimal marks. . . . . #136488 \$1495.00

1927. PCGS. MS-64+. CAC. Super fresh rich gold luster & a sharp strike. . . . . #220040 \$845.00

**Three Dollar Gold Coins**



1854-O. NGC. AU-50. The only New Orleans Mint 'Three'. 24,000 minted and heavily used in commerce with PCGS grading just 2 examples mint state. This is a pleasing example with strong detail and nice surfaces. . . . . #229164 \$3250.00

1854-O. NGC. XF-45. Well detailed and problem-free w/light yellow-gold surfaces. 24,000 minted. . . . . #229029 \$2795.00

1855-S. PCGS. XF-40. Solid detail w/pleasing surfaces. Akers called the '55-S, "one of the rarest & certainly among the most unappreciated dates in the series". He goes on to state that it has the lowest average grade in the entire series. . . . . #227173 \$3125.00

1859. PCGS. AU-55. CAC. Strong detail with attractive lustrous surfaces. . . . . #138989 \$1695.00

1868. PCGS. AU-50. A tough date with just 4,850 minted. Plus these early 'Threes' actually saw circulation before the denomination fell out of favor during the last decade or so of production. #229072 \$1850.00



1878. PCGS. MS-64+. A great choice for a gold 'type' set as 1878 'Threes' come extremely flashy, and this near-Gem is indeed flashy! It is also well struck with beautiful minimally abraded surfaces. . . . . #222044 \$5250.00

1879. PCGS. MS-62. Just 3,000 minted. This example has a razor-sharp strike and flashy semi proof-like surfaces. Very attractive and high-end for the grade. #215599 \$3995.00



1882. PCGS. MS-62. A great looking coin for the grade with flashy bright gold luster and a sharp strike. A scarce date with a mintage of just 1,500 coins. . . . . #222194 \$5995.00

1889. PCGS. MS-62. From the final year of the series/denomination with a mintage of just

2,300. This example is sharply struck with super flashy semi proof-like surfaces.  
 ..... #223571 \$3965.00

**Five Dollar Gold Coins**



- 1807. NGC. MS-61. Capped Bust to Left. A beautiful example with a bold, even strike and rich shimmering gold luster. The surfaces are pleasing and clean with far fewer marks than typically seen for the grade.  
 ..... #228931 \$12750.00
- 1811. PCGS. AU-55. Small 5. A solid strike with beautiful original surfaces w/rich mint luster. Problem-free & devoid of significant marks... #229129 \$10495.00
- 1836. NGC. AU-55. A well detailed example from the short-lived Classic Head 'Five' series. .... #229049 \$1495.00
- 1839. PCGS. XF-45. A pleasing example from the first year of \$5 Liberty production. .... #223351 \$1439.00
- 1840. PCGS. XF-45. CAC. Problem-free and attractive. .... #224036 \$775.00
- 1841-C. NGC. XF-45. Well detailed with pleasing surfaces. A scarce Southern 'Five' with just 21,467 minted. . . #228792 \$3195.00
- 1842-D. PCGS. AU-55. Small Date. 37,917 minted with few high grade survivors. The PCGS population report shows 9 pieces graded mint state & there is almost certainly duplication in the list. This is a very pleasing example with sharp detail and lustrous surfaces. A very slight touch of wear is all that keeps this beauty out of a mint state holder. .... #227449 \$5295.00
- 1843-D. PCGS. VF-35. Medium D. Solid detail w/pleasing original surfaces. #228995 \$2225.00
- 1844-O. NGC. AU-55. Sharp detail and problem-free. A popular early New Orleans Mint \$5 Liberty. .... #229133 \$1150.00
- 1845. NGC. AU-55. A well detailed and pleasing early 'Five-Lib'.... #228865 \$725.00
- 1847. NGC. AU-53. Lustrous. . #225225 \$659.00
- 1847. NGC. MS-63. CAC. A beautiful original early 'Five-Lib' with a sharp strike, clean surfaces, and very attractive antique gold lustrous surfaces. .... #228850 \$6395.00
- 1851. NGC. AU-55. A pleasing example of this early 'No Motto' \$5 Liberty. . #227463 \$699.00
- 1852. PCGS. AU-53. .... #224011 \$649.00
- 1852-C. NGC. AU-58. A popular Charlotte Mint 'Five' with a mintage of 72,574. This example is well struck & problem-free w/just the slightest touch of wear. . #228943 \$3950.00
- 1852-D. NGC. AU-53. With a mintage of 91,584; this is one of the most frequently encountered 'D' mint 'Fives' making it a good choice for collectors seeking a Dahlonega Mint 'type' coin. #228912 \$3250.00



- 1852-C. PCGS. MS-61. Well struck with bright yellow-gold luster on this beautiful Charlotte Mint 'Five'. All 'C' mint gold is rare in mint state with '52-C being the most available date. So if you're looking for a great "C-Five" at an affordable price, this is the coin for you! ..... #228799 \$7995.00
- 1853. NGC. AU-58. Nearly mint state with crisp luster and sharp detail.. #229120 \$695.00
- 1853-D. NGC. AU-58. Large D. Well struck and problem-free with crisp mint luster. .... #229130 \$4795.00
- 1854. PCGS. MS-62. A modest 160,675 minted and a date that infrequently shows up in mint state. This is a pleasing well struck example w/original lustrous surfaces. #228934 \$2995.00



- 1856. PCGS. MS-63. Well struck w/extremely flashy bright yellow-gold luster & strong eye appeal. 197,990 minted with few high grade survivors. Only 4 have graded numerically finer at PCGS.... #221811 \$7950.00
- 1857. NGC. AU-55. Nice detail. #225307 \$689.00
- 1861. NGC. MS-61. Well struck and lustrous with pleasing surfaces and fewer marks than typically seen for the grade. #229132 \$1875.00
- 1865-S. NGC. VF-30. A very scarce date with a mintage of 27,612 & less than 100 survivors known. The typical example is poorly struck with a weak mint-mark. The present coin is a pleasant exception as the detail is solid for the grade and the 'S' is very strong. .... #228891 \$3750.00
- 1879. NGC. MS-62+. CAC. A sharp strike with flashy semi proof-like surfaces. #229113 \$725.00
- 1880. PCGS. MS-64. Well struck with satiny straw-gold luster.... #225255 \$989.00
- 1880-CC. PCGS. AU-55. A scarce Carson City 'Five' that we rarely see in the marketplace in any grade. This example is well struck and attractive with lustrous surfaces. .... #223566 \$4150.00
- 1902-S. PCGS. MS-64+. CAC. Blazing orange-gold luster and a bold strike. The surfaces are beautiful and devoid of significant abrasions. .... #213527 \$995.00
- 1903-S. PCGS. MS-65+. A wonderful Liberty 'Five' with satiny surfaces that are almost flawless and a very sharp strike. The perfect coin for a quality 'type' set! #229131 \$2095.00
- 1904-S. PCGS. MS-62. Just 97,000 minted which is by far the lowest mintage for a 20th

- century \$5 Liberty. This is a pleasing well struck example with flashy mint luster. .... #228781 \$1595.00
- 1905. PCGS. MS-64. Flashy antique gold luster and a sharp strike. A modest 302,200 minted. .... #225632 \$775.00
- 1906. PCGS. MS-64+. Flashy yellow-gold luster and very nearly at the MS-65 level where there is a big price jump! . . . #227414 \$865.00
- 1907-D. PCGS. MS-65. The second of only 2 dates of 'Five Libs' from the Denver Mint. This example is well struck with rich flowing yellow-gold luster. .... #225312 \$2250.00
- 1908. PCGS. MS-64. Indian. Beautiful satiny gold luster over clean surfaces & a sharp strike. Outstanding eye appeal! . . #225365 \$1995.00



- 1909-O. NGC. MS-60. The 1909-O half eagle is one of the most celebrated coins in the \$5 Indian series. Not only is it one of the key dates, but is also the last gold coin made at the New Orleans mint and the only 'O' mint Indian gold coin of any denomination. The 34,200 coin mintage is by far the lowest in the series. This is a well struck example with lustrous orange-gold surfaces and strong eye appeal. .... #229135 \$32950.00
- 1911. NGC. MS-63. Nice for the grade with crisp original mint luster. . . #228853 \$1095.00
- 1914-D. PCGS. MS-62. Well struck w/'fresh' lustrous surfaces. .... #228952 \$875.00
- 1915. PCGS. MS-63+. Frosty orange-gold luster and a sharp strike.... #227431 \$1125.00



- 1915. PCGS. MS-65. Fabulous quality with a sharp strike, clean surfaces, and beautiful orange-gold luster. 588,000 minted and readily available up to MS-64. Scarce in MS-65 with just 54 coins graded at PCGS and 6 at 65+. None have graded numerically finer. .... #227180 \$8995.00

**Ten Dollar Gold Coins**

- 1843-O. NGC. AU-55. A sharply detailed example of this tough early New Orleans 'Ten'..... #228911 \$2995.00
- 1850. PCGS. AU-55. Large Date. Flashy mint luster from semi proof-like surfaces. .... #228807 \$1375.00
- 1884-CC. PCGS. VF-30. CAC. Exceptionally nice for the grade & a truly scarce date with a mere 9,925 minted. .... #229012 \$3295.00

\*Item Code # is located next to price.



- 1891. PCGS. MS-62+. CAC. A better date with just 91,820 minted. This example is sharply struck w/orange-gold luster. #225681 \$1469.00
- 1891-CC. NGC. MS-61. Flashy gold luster and a very sharp strike. . . . #139681 \$2750.00
- 1891-CC. PCGS. AU-58. Flashy mint luster and a bold strike. . . . . #228986 \$2295.00
- 1895-O. PCGS. MS-61. Well struck with crisp mint luster. . . . . #129810 \$1375.00
- 1902-S. PCGS. MS-64+. Satiny luster w/minimal marks and a sharp strike. . . #228910 \$1439.00
- 1904-O. PCGS. MS-63. Well struck with very clean surfaces for the grade & rich yellow-gold luster. . . . . #222466 \$2795.00
- 1907. PCGS. MS-62. Indian.. CAC. Well struck & lustrous w/far cleaner surfaces than typically found on an MS-62. . . #229019 \$1875.00
- 1907. PCGS. MS-63. Indian. CAC. Sharply struck with original rich orange-gold luster. . . . . #224737 \$2995.00



- 1916-S. PCGS. MS-62. Bright yellow-gold luster and a sharp strike. A scarce date in mint state. . . . . #220222 \$3450.00
- 1932. PCGS. MS-64+. A near-Gem with satiny gold luster over minimally abraded surfaces. . . . . #135693 \$1495.00

**Twenty Dollar Gold Coins**

- 1852-O. PCGS. XF-40. All New Orleans Mint 'Twenties' are scarce with the first 3 dates (1851-53) being the only ones that are reasonably obtainable. This is a well detailed and attractive '52-O with none of the heavy marks that seem to plague these large gold coins. Just 190,000 minted. #228883 \$4695.00



- 1854. PCGS. AU-50. CAC. Large Date. Scarce in any grade and much scarcer than the Small Date. PCGS has only graded 2 mint state coins and AU coins are far and few between. This example is well struck with minimal marks and none of them are the least bit distracting. A great coin for an advanced collector! . . . . . #222343 \$9995.00
- 1860-S. PCGS. EF-40. A pleasing 'S' mint Type-1 'Twenty' at an affordable price. . . . . #227394 \$2195.00

- 1861. NGC. XF-45. Popular as a T-1 'Twenty' and as a Civil War date. . . . #128358 \$2149.00
- 1867. PCGS. MS-61. A pleasing example of this better Type-2 'Twenty' with very flashy mint luster and a sharp strike. . . . #223560 \$7395.00
- 1871-S. NGC. AU-55. Well detailed with original lustrous surfaces. . . #229165 \$1795.00
- 1873. PCGS. MS-60. Closed 3. While the 1873 Open 3 is one of the commonest T-2 'P' mints; the Closed 3 variant is one of the rarest. This is a well struck example with flashy crisp luster. The finest we can find ever offered in auction graded MS-62 by PCGS. . . . . #228851 \$3795.00
- 1873. PCGS. MS-61. Open 3. Flashy yellow-gold luster with fewer marks than typically seen on an MS-61. . . . . #223782 \$1895.00
- 1873. PCGS. MS-62. Open 3. Crisp original luster & a sharp strike with fewer marks than typically seen for the grade. #117874 \$2495.00
- 1875. PCGS. MS-62. CAC. Nice original peach-gold luster over surfaces that have just minor tics, but none of the heavy marks that are typically seen on Type-2 'Twenties'. . . . . #229022 \$2995.00
- 1875-S. PCGS. MS-62. Semi proof-like and super flashy with rich orange-gold luster. The strike is very sharp and the eye appeal is outstanding. . . . . #226789 \$3625.00
- 1876. PCGS. MS-61. Well struck w/frosty luster & semi proof-like surfaces. . #229146 \$2025.00
- 1876-CC. PCGS. AU-58. Well struck and problem-free with crisp yellow-gold luster. A pleasing example of this scarce Carson City 'Twenty'. . . . . #219330 \$8995.00
- 1884-S. PCGS. MS-61. Flashy original mint luster. . . . . #229170 \$1650.00
- 1887-S. PCGS. MS-62. A modest 283,000 minted with very few high grade survivors. . . . . #229011 \$3995.00
- 1888-S. PCGS. MS-63. The vast majority of this date are heavily bag marked with the finest graded at PCGS being an MS-64+. This is a very pleasing example with nice satiny luster and minimally abraded surfaces. . . . . #223506 \$3595.00
- 1890-CC. NGC. AU-53. Popular Carson City issue. This example has strong detail and original lustrous surfaces. . . #217871 \$4495.00
- 1891-S. NGC. MS-62+. Well struck with original satiny luster. . . . . #228872 \$1650.00



- 1892-CC. PCGS. AU-58. CAC. Nice original lustrous surfaces& a sharp strike. Just 27,265 minted with this example being just a breath away from a mint state designation. . . . . #227219 \$11250.00



- 1895-S. PCGS. MS-65+. A bold strike with vibrant yellow-gold luster and minimal marks. Super quality and the single finest example graded at PCGS.. #229134 \$17500.00
- 1897-S. PCGS. MS-64. Vibrant gold luster and a sharp strike with minimal marks. . . . . #229000 \$2795.00
- 1898-S. PCGS. MS-63. Crisp luster and well struck. . . . . #139079 \$1799.00
- 1903. PCGS. MS-64. Very attractive with rich gold luster that has a faint orange hue. . . . . #225237 \$1950.00



- 1907. PCGS. MS-64. St. Gaudens. High Relief, Roman Numerals. Flat Edge. Extremely well struck with beautiful satiny mint luster and nice clean surfaces. Flat edge coins are actually scarcer than wire edge pieces although both seem to trade at the same levels. . . . . #208446 \$31950.00
- 1907. PCGS. MS-64. St. Gaudens. Sunglow-gold luster w/nice clean surfaces. #126729 \$2295.00
- 1909-S. PCGS. MS-63. A lustrous 'Saint' that seems conservatively graded. #224971 \$1625.00
- 1909/8. PCGS. MS-63. Minimally abraded with crisp straw-gold luster and a sharp strike. . . . . #227446 \$3950.00
- 1910. PCGS. MS-65. Well struck with clean surfaces and rich orange-gold luster. A major jumping point for affordability as just 5 have graded numerically higher at PCGS and they are \$30K+ coins. . . . #227191 \$6395.00
- 1910-D. PCGS. MS-65. Vibrant yellow-gold luster w/nice satiny surfaces. #223847 \$2769.00
- 1913. PCGS. MS-62. . . . . #225073 \$1699.00
- 1914. PCGS. MS-64. Bight attractive luster gives this near-Gem outstanding eye appeal. Only 95,250 minted. . . . . #228987 \$4595.00
- 1914-D. PCGS. MS-65. Flashy orange-gold luster and a sharp strike with minimal marks. A modest 453,000 minted.. #229171 \$2750.00
- 1916-S. PCGS. MS-64. Crisp orange-gold luster and a sharp strike. . . . #227745 \$1995.00
- 1916-S. PCGS. MS-65. Well struck with rich lustrous surfaces and minimal marks. . . . . #207161 \$2975.00





- 1921. PCGS. AU-58. One of the rarest dates in the series and particularly rare in high grade. One of the 2 known MS-66 coins sold in auction for over a million dollars back in 2005! This example has rich yellow-gold luster with only light wear on the highest points of the design. The surfaces are very clean with minimal abrasions and none of which are at all consequential. An important rarity for the advanced collector of this beautiful series. . . . . #227361 \$79500.00
- 1922. NGC. MS-65. Flashy luster and a sharp strike with minimal abrasions; far fewer than typically seen on a 65 'Saint'. #204986 \$3250.00
- 1922. PCGS. MS-65. Flashy orange-gold luster with minimal marks. . . . . #132495 \$3250.00
- 1922-S. PCGS. AU-58. Rich orange-gold luster and very nearly mint state with just a tiny trace of 'rub'. . . . . #227363 \$2750.00
- 1924. PCGS. MS-66. Beautiful satiny orange-gold surfaces. . . . . #206581 \$2250.00
- 1925-D. PCGS. MS-62. CAC. A very scarce date due to heavy melting after 1933 by the Treasury. None were probably released into circulation with a few making their way to European banks. This example has nice original yellow-gold luster with a touch of orange-red which is the typical luster pattern for the date. . . . . #227370 \$8450.00



- 1927-S. PCGS. AU-58. Very scarce in all grades as almost the entire production was held by the Treasury and melted after 1933. PCGS and NGC combined have graded just 260 coins. There is probably considerable duplication in that number as many have undoubtedly been 'cracked' to try for upgrades or crossover from one service to the other. This is a lustrous pale-gold example that is well struck and shows friction on just the highest points of the design. . . . . #227377 \$21950.00
- 1927. PCGS. MS-66. Well struck with exceptionally nice surfaces. . . . . #224750 \$2495.00
- 1927. PCGS. MS-66+. Super flashy gold luster with a nice orange accent. The strike is

needle-sharp and the surfaces are minimally abraded. . . . . #225804 \$3195.00

1928. NGC. MS-67. A gorgeous 'Saint' with intense orange-gold luster and outstanding eye appeal. An excellent choice for a top quality type set. None have graded numerically finer at NGC or PCGS.. #227182 \$8695.00

1928. PCGS. MS-66. CAC. Rich orange-gold original luster over beautiful silky smooth surfaces. If you're looking for an exceptional 'Saint' for your date or type set, this one is for you! . . . . . #229107 \$4595.00

**U.S. Patterns**

- 1866. Nickel. NGC. PF-66. BN. J-508. CAC. Ex. 1971 ANA Sale, Bass / ANA Museum Display. High R-6. The regular 1866 Shield Nickel die coupled with the No Rays reverse introduced in 1867. Struck in copper with a plain edge. An absolutely stunning coin with highly reflective proof surfaces that are mostly mint-green with a touch of gold and orange. Virtually flawless with no noteworthy spots or marks to be found. . . . . #216307 \$5995.00
- 1870. Dime. NGC. PF-66. J-849. R-5. Standard Silver design with Liberty facing right. UNITED STATES OF AMERICA circles around with IN GOD WE TRUST in a scroll below. 10 CENTS and date inside a wreath on the reverse with STANDARD above. Struck in silver with a reeded edge. Beautifully toned w/shades of steel-blue, lavender and gold. None have graded finer at NGC or PCGS.. . . . . #222344 \$2595.00



- 1879. Quarter. PCGS. PR-66. RB. J-1591. R-6. Charles Barbers' "Washlady" obverse depicts Ms. Liberty with her hair piled atop her head. IN GOD WE TRUST is above with the date below and 13 stars around. An eagle is perched on the reverse with an olive branch in one claw and three arrows in the other. UNITED STATES OF AMERICA & E PLURIBUS UNUM are above with QUAR DOLLAR below. This is one of the most admired of all pattern designs and is beautifully rendered on this magnificent example. Struck in copper with a reeded edge. The surfaces are very flashy and mostly red with a touch of iridescent lavender.. . . . #225464 \$19925.00

**Private Mint Gold**

- 1860. NGC. MS-61. California Fractional Gold. BG-1102. One Dollar. Octagonal Liberty Head. R-4. Well struck with flashy proof-like surfaces. Issued by Frontier, Deviercy & Co. . . . . #228857 \$1095.00
- 1864. PCGS. AU-58. California Fractional Gold. BG-706. 25¢. Octagonal Liberty Head.

- High R-5. Quite scarce with this being the first we've ever owned. . . . . #229098 \$349.00
- 1867. PCGS. MS-62. California Fraction Gold. BG-825. 25¢. Round Liberty Head. R-3. . . . . #229100 \$359.00
- 1870. PCGS. AU-58. California Fraction Gold. BG-763. 25¢. Octagonal Liberty Head. R-4. . . . . #229099 \$259.00
- 1882. NGC. MS-64. PL. California Fractional Gold. BG-799CC. 25¢. Octagonal Indian Head. R-6. Very flashy with deep mirrored surfaces. Scarce. . . . . #227160 \$1795.00

**Hawaiian Coin**

- 1883. Dime. PCGS. AU-50. CAC. Sharp detail w/lustrous steel-gray surfaces. #228846 \$325.00

**Large Size Currency**

- 1880. \$10. F-106. PMG. Ch Unc-64. EPQ. LTN. F-106, Jackass type. Strong vibrant colors exist on this nearly Gem example. . . . . #217224 \$2695.00
- 1880. \$10. F-113. PCGS. Very Ch-64. PPG. LTN. Super bright & fresh example of this premium quality Jackass note. . . . . #140788 \$2795.00
- 1886. \$5. F-261. PCGS. XF-40. Silver Cert. Silver Dollar Back. A high quality note that will add nicely to any fine large size collection. . . . . #119016 \$6750.00
- 1886. \$5. F-261. PMG. VF-20. Silver Cert. Silver Dollar Back. . . . . #201219 \$3295.00



- 1886. \$5. F-263. PMG. Ch Unc-64. EPQ. Silver Cert. F-263, Silver Dollar Back. A simply gorgeous example of this large brown seal issue. . . . . #140097 \$14995.00
- 1891. \$1. F-350. PCGS. Ch AU-55. Treasury Note. Portrait of Ed Stanton, Sec of War under Lincoln. A beautiful note that has the look of a fully unc. example. . . . . #119029 \$1095.00
- 1891. \$1. F-352. PMG. Gem-65. EPQ. Treasury Note. Portrait of Ed Stanton, Sec of War under Lincoln. . . . . #140733 \$2495.00
- 1891. \$10. F-370. PMG. Gem-66. EPQ. Treasury Note. Portrait of General Sheridan. A magnificent example that presents itself as nice as any piece of currency one could hope to have. . . . . #204213 \$7550.00
- 1891. \$2. F-246. PCGS. VF-30. Apparent. Silver Cert. F-246. Portrait of William Windom. A very attractive note. PCGS has used the apparent designation for mounting remnants on back. In our opinion this is very trivial. All in all quite a nice note for the cost. . . . . #218451 \$1395.00
- 1891. \$5. F-362. PMG. Gem-65. EPQ. Treasury Note. Portrait of General Thomas. . . . . #131412 \$4295.00

\*Item Code # is located next to price.



1899. \$2. F-253. PMG. Gem-65. EPQ. Silver Cert. F-253, A lesser seen signature combination of the Agricultural \$2. Outstanding quality. . . . . #217221 \$2250.00
1899. \$2. F-258. PCGS. Ch AU-55. Silver Cert. Agricultural Issue. A gorgeous bright note that can barely be told from Choice CU. . . . . #204196 \$1095.00



1899. \$5. F-281. PCGS. Gem-65. PPQ. Silver Cert. Indian Chief. An outstanding original that bright, fresh and crisp. Wonderful for the grade and a highlight note for any collection. . . . . #210946 \$6695.00
1901. \$10. F-119. PCGS. Ch AU-55. PPQ. LTN. Bison. Bright and fresh with the appearance of a Choice CU. #200981 \$4795.00
1906. \$20. F-1186. PCGS. Ch AU-58. Gold Cert. F-1186. An outstanding note of very high quality. This one will fit well in the nicest of collections. Very Scarce.. #218085 \$1995.00



1914. \$100. F-1104. PMG. Gem-66. EPQ. FRN. Atlanta District. Fabulous quality that quickly approaches the Superb Gem level. The perfect choice for a type note. . . . . #215487 \$8450.00
1917. \$1. F-36. PCGS. Gem-65. PPQ. LTN. Nice eye appeal.. . . . #131380 \$599.00
1917. \$1. F-36. PCGS. New-62. PPQ. LTN. Two Digit Serial Number, 83. From the B/A block. . . . . #139900 \$1295.00
1922. \$10. F-1173. PMG. Gem-65. EPQ. Gold Cert. F-1173. There is not much prettier in currency than a Gem quality Gold Certificate. . . . . #131430 \$2995.00
1923. \$1. F-239. PMG. F-12. Silver Cert. The very scarce Woods/Tate issue. #117837 \$249.00
1923. \$1. F-40. PCGS. Superb-67. PPQ. LTN. Red Seal. An elusive rarity in this lofty grade. For those who really like high end quality. . . . . #210936 \$2995.00
1923. \$1. F-40. PCGS. Very Ch-64. PPQ. LTN. Fresh and crisp, very nearly Gem quality. . . . . #204187 \$995.00
1923. \$5. F-282. PCGS. VF-20. Silver Cert. Solid for the grade. . . . . #225626 \$1450.00

**Small Size Currency**

1928. \$20. F-2050-F. PCGS. Very Ch-64. PPQ. FRN. Atlanta District. . . . . #225664 \$325.00

- 1928-C\*. \$5. F-1528\*. PCGS. Ch AU-58. PPQ. LTN. F-1528\*, Star Note. A simply beautiful example that appears to be fully Choice Uncirculated until very close scrutiny is given. . . . . #218495 \$625.00
- 1928-C\*. \$5. F-1528\*. VF. LTN. Star note. Very nice for the grade. . . . #225730 \$199.00
1929. \$100. F-1890-G. VF. FRBN. Chicago. . . . . #225280 \$185.00
1934. \$10. F-1701. CCU. Silver Certificate. Non Mule. . . . . #225900 \$189.00
- 1934-A. \$10. F-1702. CCU. Silver Certificate. Good eye appeal. . . . . #133892 \$245.00
- 1934-A. \$10. F-2006-C. PCGS. Ch New-63. FRN. Philadelphia, Mule. . . . #225791 \$199.00
- 1934-A. \$10. F-2006-C. PCGS. Ch New-63. PPQ. FRN. Philadelphia Mule. #225792 \$209.00
- 1934-B. \$10. PMG. Ch Unc-64. EPQ. Silver Certificate. Very Scarce. . . . #135921 \$2795.00
- 1934-C\*. \$10. PMG. Ch Unc-64. EPQ. FRN. PMG. Ch Unc-64. EPQ. Star note, Philadelphia. . . . . #120886 \$249.00
- 1934-D. \$10. PCGS. Gem-65. PPQ. Silver Cert. Fresh 'out of the pack' look.. #115302 \$299.00
- 1934-D. \$5. F-1654. PCGS. Gem-65. PPQ. Silver Cert. Wide II variety. . . #225463 \$119.00
- 1934-D\*. \$5. PCGS. Ch New-63. PPQ. Silver Cert. Star note. Wide I variety. #120882 \$319.00
- 1953\*. \$2. F-1509\*. CCU. LTN. Red Seal. . . . . #225527 \$75.00
- 1953\*. \$2. F-1510\*. PCGS. Gem-66. PPQ. LTN. Star note. . . . . #225388 \$199.00



- 1953-A\*. \$10. F-1707\*. PMG. Gem-65. EPQ. Silver Certificate. Star note. The key issue of the all of the 1953 \$10 stars. #225649 \$995.00
- 1953-A\*. \$10. PCGS. Very Ch-64. PPQ. Silver Certificate. Star note.. #123630 \$749.00
- 1953-A\*. \$5. F-1656\*. CCU. Silver Certificate. Nice.. . . . #225327 \$75.00
- 1963-A. \$1. CCU. FRN. Single Digit Serial Number oooooo06 from the E/F Block. Richmond District . . . . . #137633 \$895.00
1966. \$100. F-1550. CAU. LTN. Red Seal. . . . . #225323 \$269.00
- 1966-A. \$100. F-1551. XF. LTN. Red Seal. . . . . #225429 \$365.00
- 1966-A. \$100. PCGS. AU-50. LTN. Red Seal. . . . . #118749 \$529.00
- 1988-A. \$1. F-1917-B. PCGS. VF-20. FRN. New York Web Note. Very scarce. #225506 \$119.00
- 1995\*. \$2. CU. FRN. Premium Millennium 12pc Star District set. As issued in original BEP packaging. Serial # ending 1619. . . . . #228994 \$565.00
2003. \$1. CCU. FRN. Serial # 40. oooooo40. Chicago District. . . . . #120174 \$179.00
2003. \$1. CCU. FRN. #66, Two Digit. oooooo66. Chicago District. #120195 \$179.00

2003. \$1. F-1929-G. CCU. FRN. Serial # 80. oooooo80. Chicago District. #120178 \$179.00
2003. \$1. F-1929-G. CCU. FRN. #22, Two Digit. oooooo22. Chicago District. #120191 \$179.00

**National Currency**

1875. \$1. VG. MA. Boston. Charter 603. The New England National Bank. F-384. First Charter. CGA. VG-08. . . #119393 \$595.00
1902. \$5. PCGS. VF-20. Apparent. DE. Odessa. Charter 1281. New Castle County National Bank. PCGS uses the apparent term and mentions a stain in the portrait as well as minor rust stains on the back. Still a very desirable note. . . . . #217269 \$795.00
1929. \$10. FINE. NY. New York. Charter 12550. Jamaica National Bank. Very desirable Queens issue. Upper right corner has some paper loss. . . . . #112388 \$499.00
1929. \$20. FINE. NY. Ballston Spa. Charter 1253. The Ballston Spa National Bank. Grades a full Fine. . . . . #213761 \$295.00
1929. \$20. VF+. MD. Westernport, Citizens National Bank. Charter 5831. Scarce. . . . . #75113 \$419.00
1929. \$20. VG. MD. Westernport. Ch. 5831. The Citizens National Bank. . #113529 \$249.95
1929. \$5. PMG. F-12. NJ. Woodbury. Ch. 3716. Farmers & Mechanics National Bank. Type 2. Has a small spot in the area of the lower left signature though PMG obviously did not see it as needing to be noted. . . #122735 \$299.00

**Military Payment Certificates**

- \$1. 641. VF. 1965-68. Replacement note. Very scarce. About 26 known. #216854 \$249.00
- \$1. 661. FINE. 1968-69. Replacement note. Scarce. . . . . #216858 \$99.00
- \$1. 661. VF. 1968-69. Replacement note. Scarce. . . . . #216862 \$119.00
- \$1. 661. XF+. 1968-69. Replacement note. Scarce. . . . . #216859 \$219.00
- \$1. 692. VF. 1970-73. Replacement note. Scarce. . . . . #216856 \$139.00
- \$10. 641. XF. 1965-68 \$10 Series 641. Vietnam issue. Replacement note. Scarce higher denomination. . . . . #216815 \$249.00
- \$20. 681. VF. 1969-70 Replacement Note. High denomination. Very scarce and desirable. . . . . #216790 \$299.00
- \$5. 641. FINE. 1965-68. Replacement note. Scarce. . . . . #216857 \$329.00
- 10 Dollars. 471. VF. (1947-48) Europe Occupation Issue. Very Scarce. . . . #216397 \$169.00
- 10¢. Series 661. FINE. 1968-69. Replacement note. Fine. A couple of typical rust stains. Scarce and desirable. . . . . #215674 \$195.00

- 10¢. Series 692. VF. 1970-73. Replacement note. VF. A single pinhole in the neck. A little minor light staining. Scarce and desirable. . . . . #215670 \$99.00
- 10¢. 681. VF. 1969-70 Replacement note. Very scarce. . . . . #216819 \$139.00
- 10¢. 692. XF. 1970-73 Replacement note. Scarce. . . . . #216824 \$110.00
- 25¢. Series 461. CCU. 1946-47. Europe and Japan use. . . . . #215960 \$149.00
- 25¢. 692. VF. 1970-73 Replacement note. Scarce. . . . . #216834 \$139.00
- 5¢. Series 472. CU. 1948-51 Replacement note. Very scarce. Stain in lower right corner. . . . . #132159 \$249.00
- 5¢. Series 472. PMG. AU-55. EPQ. Replacement note. Very scarce. . . . . #132154 \$375.00
- 5¢. 472. VG. 1948-51 Replacement note. Very scarce. . . . . #216755 \$109.00
- 50¢. 541. GCU. 1958-61 Replacement Note. Fresh & super vibrant. Scarce. #216843 \$695.00

**Fractional Currency**

- 10¢. 1st Issue. CCU. F-1241. Postage currency. The very scarce perforated edges without monogram example. . . . . #216894 \$395.00
- 10¢. 2nd Issue. CCU. F-1249. Fiber paper with surcharges "T-1-18-63". Rare. The first we've handled! . . . . . #108722 \$695.00



- 25¢. 5th Issue. PMG. Superb-67. EPQ. F-1309. Portrait of Robert Walker, Sec. of the Treasury 1845. Short Key variety. . . . . #221892 \$695.00
- 3¢. 3rd Issue. FINE. F-1227. Dark background. . . . . #216874 \$69.95
- 5¢. 1st Issue. PCGS. Ch New-63. F-1229. Perforated edges without the monogram. Attractive bright color. . . . . #221517 \$375.00
- 5¢. 1st Issue. PCGS. VF-35. PPQ. F-1230. Inverted Reverse. Very scarce. #204972 \$450.00
- 5¢. 1st Issue. VF. F-1230. Postage Currency. ERROR. Inverted Reverse. . . #216882 \$350.00
- 50¢. 2nd Issue. PCGS. Ch AU-55. PPQ. Experimental Issue with blank reverse. Milton 2E50F.4. Two standard half moon cancellations. Very Rare. . . . #204969 \$475.00
- 50¢. 2nd Issue. PMG. Ch Unc-64. EPQ. Experimental Reverse on Fiber Paper similar to M-2E50R.3b. A great rarity. #115198 \$695.00
- 50¢. 3rd Issue. AU. F-1363. Justice, Green back with surcharge A 2 6 5 and Design "1" & "a". Very scarce. Minor foxing. . . #127953 \$445.00
- 50¢. 3rd Issue. CAU. 1370. Justice, Fiber Paper. A beautiful note . Scarce. . . . #216950 \$495.00
- 50¢. 3rd Issue. PMG. Gem-65. EPQ. F-1324. Portrait of Spinner w/red rev. #115450 \$695.00
- 50¢. 4th Issue. PMG. Ch Unc-63. F-1376. Portrait of Edwin Stanton, Sec. of War under Lincoln. . . . . #221898 \$379.00



- 50¢. 3rd Issue. PCGS. Very Ch-64. PPQ. F-1360. Justice. Scarce #. A beautiful note that many would call Gem. . #115205 \$789.00

**Obsolete Currency**

- 18\_\_ . \$5. PCGS. Very Ch-64. Apparent. NJ. PROOF, Newton, The Sussex Bank. Has the typical hole punch cancellations. PCGS uses the apparent term for small repaired tears. Pedigree to the American Bank Note archives. . . . . #219263 \$350.00
- 1837. 10¢. CAU. MD. Maryland State Colonization Society. For use at the government store in Harper, Maryland, Liberia - a freed slave colony. Rooster ctr. Pink paper. Contemporary reprint. Neat! . #90106 \$199.95



- 1837. 10¢. PCGS. Very Ch-64. Apparent. PA. PROOF. Philadelphia, Penn Township Savings Institution. PCGS uses the apparent term for minor mounting remnants on back. Very scarce. . . . . #219265 \$395.00
- 1840. 12 1/2. VG. MD. Baltimore. T. T. Tucker & Bros. KSG #5.157.2. R-6. The issuer operated a lottery and exchange brokerage business from 1837 to 1840. This scrip was redeemable in stock orders of the Baltimore and Ohio Railroad Co. . . . . #120784 \$195.00
- 1850's. \$100. CU. RI. New England Commercial Bank. Newport. G. Washington at left. W/o green overprt. . . . . #133800 \$179.00
- 1850's. \$5. SPF. NJ. Sussex Bank., Newton, NJ. A few small foxing spots and a pull around one of the poc cancellations, otherwise quite choice. From the American Bank Note Co. . . . . #121803 \$295.00
- 1850's. \$500. CCU. LA. Canal Bank, New Orleans. Paddlewheel steam frigate ctr; young girl l. Fancy red back. Super! #216728 \$249.00
- 1852. \$5. CAU. DC. Columbia Bank. Washington DC. Liberty, maids center; Columbia left; George Washington right. Nice! . . . . . #216312 \$110.00
- 1854. \$1. PCGS. Ch New-63. PPQ. DC. Metropolitan Bank Washington DC. 3 vignettes. Red ink reads "REDEEMABLE AT NO. 70 NASSAU STREET . NEW YORK". Red ONE in background. . . . #228813 \$249.00
- 1854. \$1. PCGS. Very Ch-64. PPQ. DC. Metropolitan Bank Washington DC. 3 vignettes. Red ink reads "REDEEMABLE

- AT NO. 70 NASSAU STREET . NEW YORK". Red ONE in background. . . . #227402 \$269.00
- 1854. \$2. PCGS. New-62. PPQ. DC. Metropolitan Bank Washington DC. 3 vignettes. Red ink reads "REDEEMABLE AT NO. 70 NASSAU STREET . NEW YORK". Red TWO in background. . . . #228815 \$259.00
- 1854. \$3. PCGS. Ch AU-58. DC. Metropolitan Bank Washington DC. 3 vignettes. Red ink reads "REDEEMABLE AT NO. 70 NASSAU STREET . NEW YORK". Red Three in background. . . . . #228818 \$239.00
- 1854. \$3. PCGS. New-62. PPQ. DC. Metropolitan Bank Washington DC. 3 vignettes. Red ink reads "REDEEMABLE AT NO. 70 NASSAU STREET . NEW YORK". Red THREE in background. . . #227405 \$279.00
- 1855. \$1. PCGS. VF-35. Apparent. RI. Farmers Bank Wickford, RI. Vignette of Men with Cattle. PCGS uses the apparent term to mention pinholes. . . . . #220410 \$129.00
- 1859. \$10. FINE. GA. Timber Cutter's Bank. Two maids with cattle. . . . . #121287 \$99.95
- 1860. \$50. VF. GA. Farmers & Mechanics Bank. Savannah. Sailor reclines on shore with anchor center. Liberty right. Beautiful overprints. . . . . #106374 \$259.00



- 1860's. \$10. PCGS. Gem-65. PPQ. LA. Citizens Bank of Louisiana, Vignette of USS Adriatic at Sea. The famous "Dix" note. Considered by many to be the most beautiful obsolete currency issue of all. Simply a fantastic remainder note. . . #134546 \$1095.00
- 1860'S. \$5. CCU. NE. Bank of Florence. Indians, settlers; beaver; Pres. Fillmore. Super! . . . . . #216649 \$125.00
- 1861. \$1. CCU. MD. Allegany County Bank, Cumberland. Vignette of Horses drinking water and cattle feeding. . . . #216747 \$159.00
- 1861. \$5. Fine+. PA. Farmers & Mechanics Bank, Philadelphia. Farmer & horses ctr; engineer l. Red tints. . . . . #109729 \$139.00
- 1862. \$10. CU. VA. Virginia Treasury Note. The much scarcer variety with the TCC & Co watermark. . . . . #216589 \$199.00
- 1862. \$100. CAU. VA. Virginia Treasury Note. Portrait of Gov. Letcher, George Washington and Indian maiden. . . . . #110647 \$269.95
- 1862. \$2. PCGS. Ch New-63. PPQ. DC. Bullion Bank. Washington, DC. Portrait of girl in ctr. Beautiful note in great condition. . . . . #140837 \$350.00
- 1862. \$3. CCU. MD. Somerset & Worcester Savings Bank., Salisbury., Maid and workers. Red tint. . . . . #132775 \$119.00
- 1862. \$50. CCU. VA. Virginia Treasury Note. Sen. Mason; 3 females. Orange tint. Nice! . . . . . #108962 \$269.00

\*Item Code # is located next to price.



- 1863. \$2. XF. NE. Bank of De Soto. Riverboat "De Soto" ctr. Train l. Maiden r. Green TWO. Lovely! . . . . . #109924 \$109.95
- 1863. \$20. CCU. NC. State of North Carolina, Raleigh. Gov. Zeb Vance ctr. Beehive r. Red TWENTY. Super! . . . . . #216702 \$150.00
- 1863. \$5. CCU. NC. State of North Carolina, Raleigh. Harbor at Wilmington ctr, Gov. Vance r. Red FIVE. Nice! . . . #216689 \$110.00
- 1863. \$5. VF. AR. Arkansas Treasury Warrant. Portrait of Governor H.M. Rector. Vignette of a slave carrying a basket of cotton. . . . . #216396 \$109.95
- 1864. \$5. PMG. VF-25. FL. Tallahassee. Vignette of Moneta in ctr and Indian Brave at left. . . . . #140737 \$325.00
- 1872. \$20/\$50. CCU. SC. Uncut sheet of 4. March 2, 1872 Columbia South Carolina. Consists of two \$20 & two \$50 notes per sheet. Printed by American Bank Note. . . . . #209973 \$349.00
- 1874. \$1. AU. GA. Central Georgia Bank. Macon. Beehive in flowers. Dogs head. Ornate green reverse. . . . . #130872 \$119.00

**Colonial Currency**

- December 1771. NC. One Pound. PMG. AU-55. Vignette of Bear representing the constellation Ursa Minor. A beautiful note. . . . . #118787 \$295.00
- December 1771. NC. Ten Shillings. PMG. Ch Unc-64. EPQ. Vignette of Sailing Ship. Excellent original pen signs. . #206199 \$495.00
- December 1771. NC. Two Shillings & Six Pence. CU. Beautiful original note that is very nearly Choice. One tiny pinhole has been closed. Vignette of House. . . #206305 \$350.00
- December 1771. NC. Two Shillings & Six Pence. PMG. Ch Unc-63. Vignette of House. Original pen signatures. . . . #206200 \$465.00
- 12/1768. NC. Forty Shillings. PMG. VF-20. Very nice endorsements on the back side. A very scarce note. . . . . #119827 \$350.00



- 12/1768. NC. PMG. AU-50. Even the Newman catalog only lists this series as high as Very Fine. This one is a true prize and worthy of the finest collection. Of awesome rarity at this quality level. . . . . #119828 \$875.00
- 12/1768. NC. Three Pounds. PMG. VF-30. Very Scarce. All four original pen signatures intact. A beautiful example of this rare note. . . . . #119760 \$350.00
- 12/1771. NC. One Pound. PMG. VF-30. Vignette of Spotted Bear representing the constellation Ursa Minor. . . #119752 \$239.00
- 12/31/1763. NJ. One Shilling. PMG. Ch Unc-63. EPQ. A wonderful high quality early note. . . . . #206219 \$550.00

- 12/31/1763. NJ. One Shilling. PMG. Ch Unc-64. EPQ. A gorgeous example. Outstanding bold original pen signatures. Finding the earlier issues or for that matter any colonial issues in this kind of quality can be quite a challenge. . . . . #206217 \$595.00
- 12/31/1763. NJ. Twelve Shillings. PCGS. Ch New-63. PPQ. Bold signatures and a fresh look. . . . . #126151 \$575.00
- 12/7/1775. MD. Four Dollars. PMG. VF-20. Nice type note. . . . . #128280 \$259.00
- 1771. NC. Two Shillings Six Pence. PMG. Ch VF-35. The "Duck" vignette. This is the highest possible grade in the VF range. . . . . #115002 \$249.00
- 3/10/1769. PA. Ten Shillings. PCGS. G-6. Scarce issue. . . . . #121702 \$259.00
- 3/16/1785. PA. Five Shillings. PMG. VF-25. The very scarce and final Pennsylvania issue. . . . . #121881 \$795.00
- 3/16/1785. PA. Two Shillings Six Pence. PMG. Ch F-15. Scarce issue. . . . . #132749 \$349.00
- 4/23/1761. NC. Twenty Shillings. PMG. AU-50. This is a grade that is hard to believe even exists in this series. The extensive work by Newman only lists this type in grades up to Very Fine. A great item to add to your collection. . . . . #119824 \$795.00
- 4/23/1761. NJ. Thirty Shillings. PMG. F-12. A very respectable note for an earlier series. . . . . #120481 \$219.00
- 4/23/1761. NJ. Three Pounds. PMG. VF-20. An extremely scarce early issue with only 2850 notes printed. . . . . #118565 \$525.00
- 4/4/1748. NC. Three Pounds. PCGS. VF-30. Apparent. Vignette of Fort with Flag and Cannon. PCGS mentions edge splits and restoration of missing pieces. An extremely rare issue. . . . . #206186 \$895.00
- 5/1/1777. DE. Two Shillings Six Pence. PMG. Ch AU-58. Very scarce. . . . . #120024 \$595.00



- 6/8/1777. GA. Six Dollars. PCGS. XF-40. A wonderful unmolested example that is ever so difficult to find in any grade let alone an XF. This example represents super value. . . . . #130537 \$2695.00
- 7/14/1760. NC. Thirty Shillings. PMG. VF-25. Very rare with only 1000 notes printed. A most attractive note that is absolutely problem and defect free. . . . #119821 \$359.00
- 7/14/1760. NC. Three Pounds. PMG. VF-20. Scarce early issue. Has the "Death to Counterfeit" clause. . . . . #206192 \$345.00

**Confederate Currency**

- 1862. \$2. PCGS. VF-20. T-43. Vignette of South Striking Down the Union. Green overprint. . . . . #138823 \$495.00



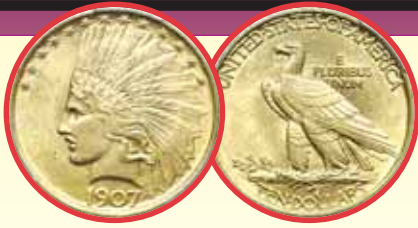
- 1861. \$50. PCGS. VF-35. T-6. A wonderful high grade example of this beautiful Richmond green and black note. Graded by PCGS at VF-35 which is the highest possible level for a VF. The next step would be to XF. Both rarity and quality make this a very desirable note. . . . . #210673 \$2995.00
- 1864. \$5. CCU. T-69. State capitol at Richmond, center. No series. Plate A. . . . #228921 \$69.95
- 1864. \$5. CCU. T-69. State capitol at Richmond, center. No series. Plate D. . . . #228922 \$69.95
- 1864. \$5. CCU. T-69. State capitol at Richmond, center. Series 1. Plate F. . . . . #228923 \$69.95

**Error Notes**

- 1957-B. \$1. CCU. Silver Certificate. Mismatched serial numbers U37/U47. Very scarce! . . . . . #228984 \$399.00
- 1957-B. \$1. PCGS. Superb-67. PPQ. Silver Certificate. Mismatched Serial # U37/47. Wonderful quality. . . . . #217368 \$595.00
- 1974. \$5. PMG. AU-55. EPQ. FRN. Mismatch Serial number. J361/J351 . KC district. . . . . #119150 \$579.00
- 1976. \$2. PCGS. Gem-65. PPQ. FRN. Mismatched Serial Prefix Letters. H/B. . . . . #208165 \$750.00



- 1981-A. \$20. PMG. Ch AU-58. EPQ. FRN. A magnificent double printing of the 2nd print stage. Very scarce. . . #124874 \$2695.00
- 1985. \$1. CU. FRN. Complete stage 2 invert of the entire 3rd print stage. All seals and numbers are upside down as well as a slice of the upper note on the sheet visible. Atlanta District. . . . . #126363 \$550.00
- 1993. \$20. PCGS. Ch New-63. PPQ. FRN. Complete Invert of the entire 3rd print stage. All seals and numbers are upside down. NY District. . . . . #132900 \$675.00
- 1995. \$5. PCGS. Gem-65. PPQ. FRN. Missing the entire green portion of the 3rd print stage except for a faint trace of the last two digits of the serial numbers. A wild error that is from an original pack. . . . . #217372 \$349.00
- 1995. \$5. PCGS. Gem-66. PPQ. FRN. Missing the entire green portion of the 3rd print stage except for a faint trace of the last two digits of the serial numbers. A wild error and from an original pack that we purchased sometime back. . . . . #217373 \$439.00



## 1907 \$10 Indians

**PCGS. MS-64**

Nice flashy examples of this popular 'Ten-Indian' from the first year of the series.

**Only \$3,595.00 Each** #224193



## 1799 Ten Dollar Gold Coin

**PCGS. AU-58 • Large Star Obverse**

A very attractive early 'Ten' with sharp detail and nice lustrous surfaces. 37,449 minted with an estimated 300 to 400 survivors.

**Only \$27,650.00** #229233



## 1915-S Panama-Pacific One Dollar Gold Commemoratives

**PCGS. MS-65**

Very attractive coins with frosty gold luster & sharp strikes.

**Only \$1,095.00 Each** #136894



## 1946-S Walking Liberty Half Dollars

**PCGS. MS-67**

We are fortunate to have a couple of blast white Superb Gems in stock. PCGS has graded just four coins finer - all MS-67+.

**Only \$1,495.00 Each** #224298



## 1909-VDB Lincoln Cents

**PCGS. MS-66 Red**

Nearly flawless original mint red blazers!

**Only \$295.00 Each** #124737



## Beautiful Gem Copper-Nickel Indian Head Cents

**PCGS Graded MS-65**

1859. #202354	\$2,395.00	1862. #125854	\$895.00
1861. #201208	\$1,250.00	1863. #204079	\$849.00



# The Official 2018 "Red Book" Coin Guides

Hard Cover for \$16.95 #114534 • Soft Cover for \$14.95 #114533

